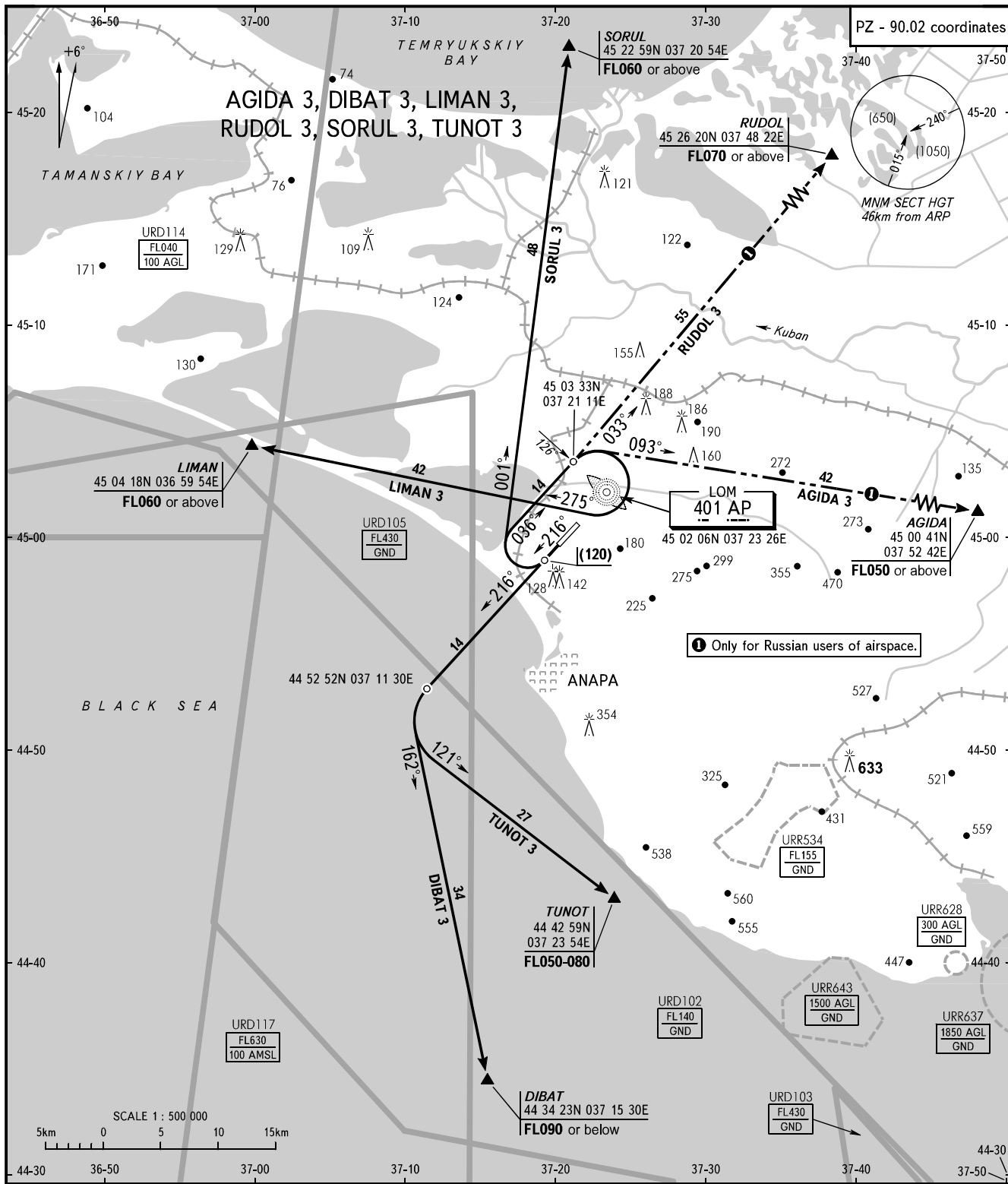


STANDARD DEPARTURE CHART  
INSTRUMENT (SID) - ICAO

ANAPA, RUSSIA  
VITYAZEVO  
RWY 22

TRANSITION  
HEIGHT : (1100)

PZ - 90.02 coordinates



① Only for Russian users of airspace.

START (Additionally serves as TAXIING)	119.8
KRUG (FL100 or below)	118.7
ROSTOV CONTROL (Serves as ANAPA APP at FL100 or above)	122.9

- WARNING:**
1. Take-off on heading 216° MAG shall be carried out using noise abatement procedures.
  2. Right turn after take-off at (120)m shall be carried out with minimum radius.
  3. Departures along all SID routes shall be carried out under radar control.

BEARINGS AND TRACKS ARE MAGNETIC  
ALTITUDES, HEIGHTS AND ELEVATIONS ARE IN METRES  
DISTANCES ARE IN KILOMETRES