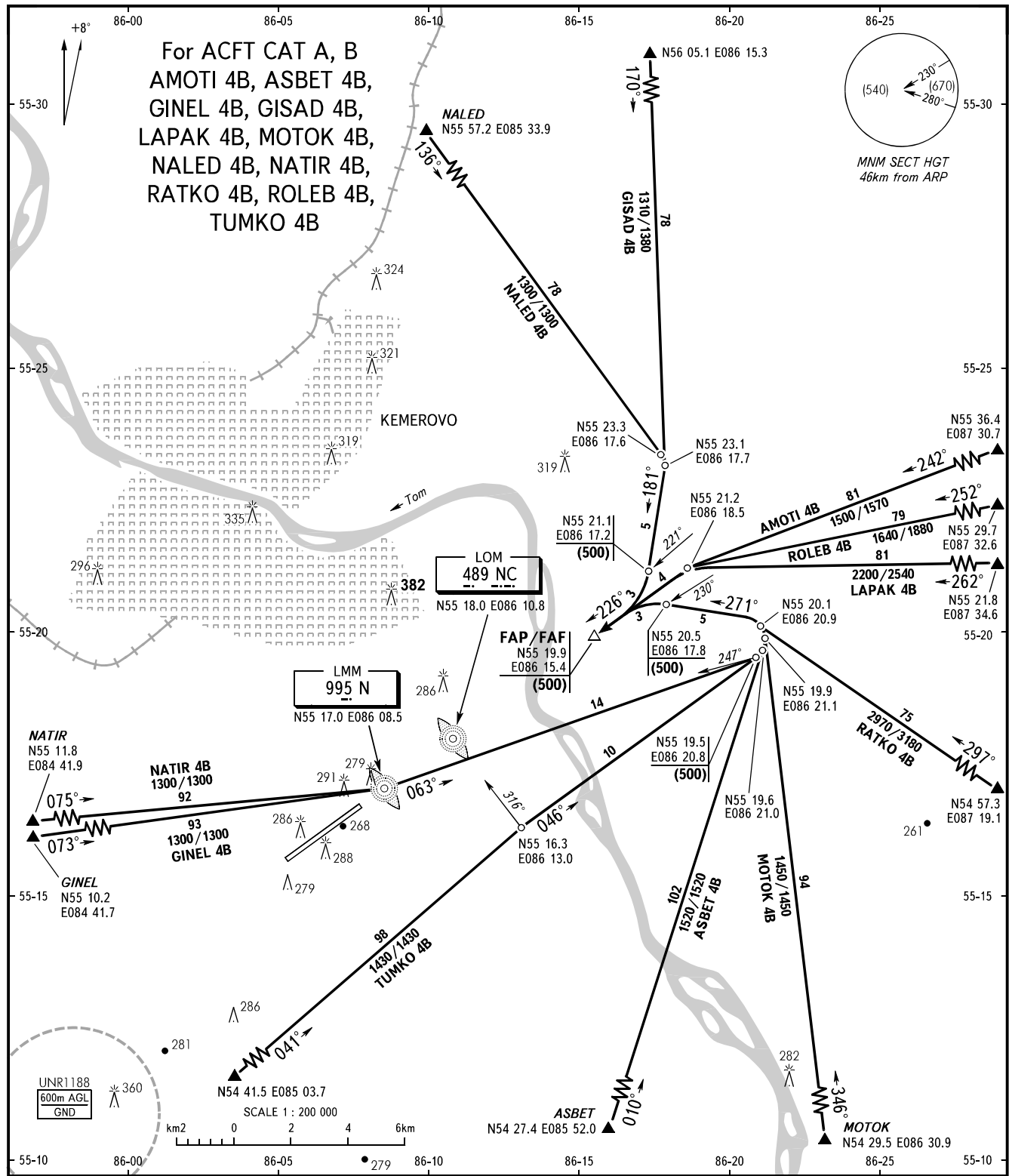
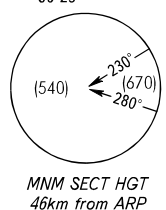


STANDARD ARRIVAL CHART
INSTRUMENT (STAR) - ICAO

KEMEROVO, RUSSIA
KEMEROVO
RWY 23

TRANSITION
LEVEL: **1**

For ACFT CAT A, B
AMOTI 4B, ASBET 4B,
GINEL 4B, GISAD 4B,
LAPAK 4B, MOTOK 4B,
NALED 4B, NATIR 4B,
RATKO 4B, ROLEB 4B,
TUMKO 4B



APPROACH FL150 or below **125.5**
START **118.3**

- 1** TRANSITION LEVEL:
- FL030 when atmospheric pressure is 760mm mercury column or above;
 - FL040 when atmospheric pressure is 759-733mm mercury column;
 - FL050 when atmospheric pressure is 732mm mercury column or less.

BEARINGS AND TRACKS ARE MAGNETIC
ALTITUDES, HEIGHTS AND ELEVATIONS ARE IN METRES
DISTANCES ARE IN KILOMETRES