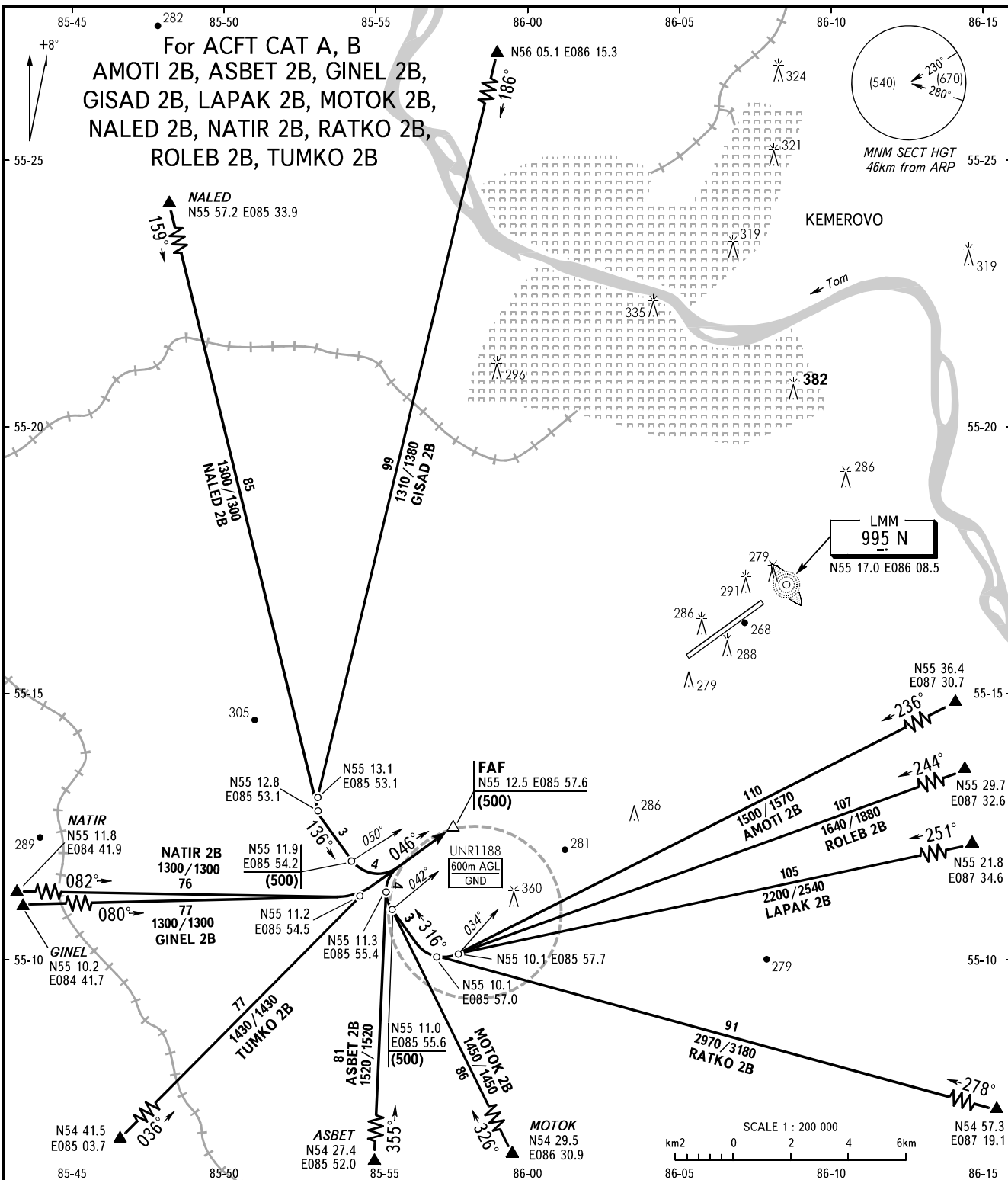


STANDARD ARRIVAL CHART  
INSTRUMENT (STAR) - ICAO

KEMEROVO, RUSSIA  
KEMEROVO  
RWY 05

TRANSITION  
LEVEL: **1**



APPROACH FL150 or below **125.5**  
START **118.3**

- 1** TRANSITION LEVEL:
- FL030 when atmospheric pressure is 760mm mercury column or above;
  - FL040 when atmospheric pressure is 759-733mm mercury column;
  - FL050 when atmospheric pressure is 732mm mercury column or less.

BEARINGS AND TRACKS ARE MAGNETIC  
ALTITUDES, HEIGHTS AND ELEVATIONS ARE IN METRES  
DISTANCES ARE IN KILOMETRES