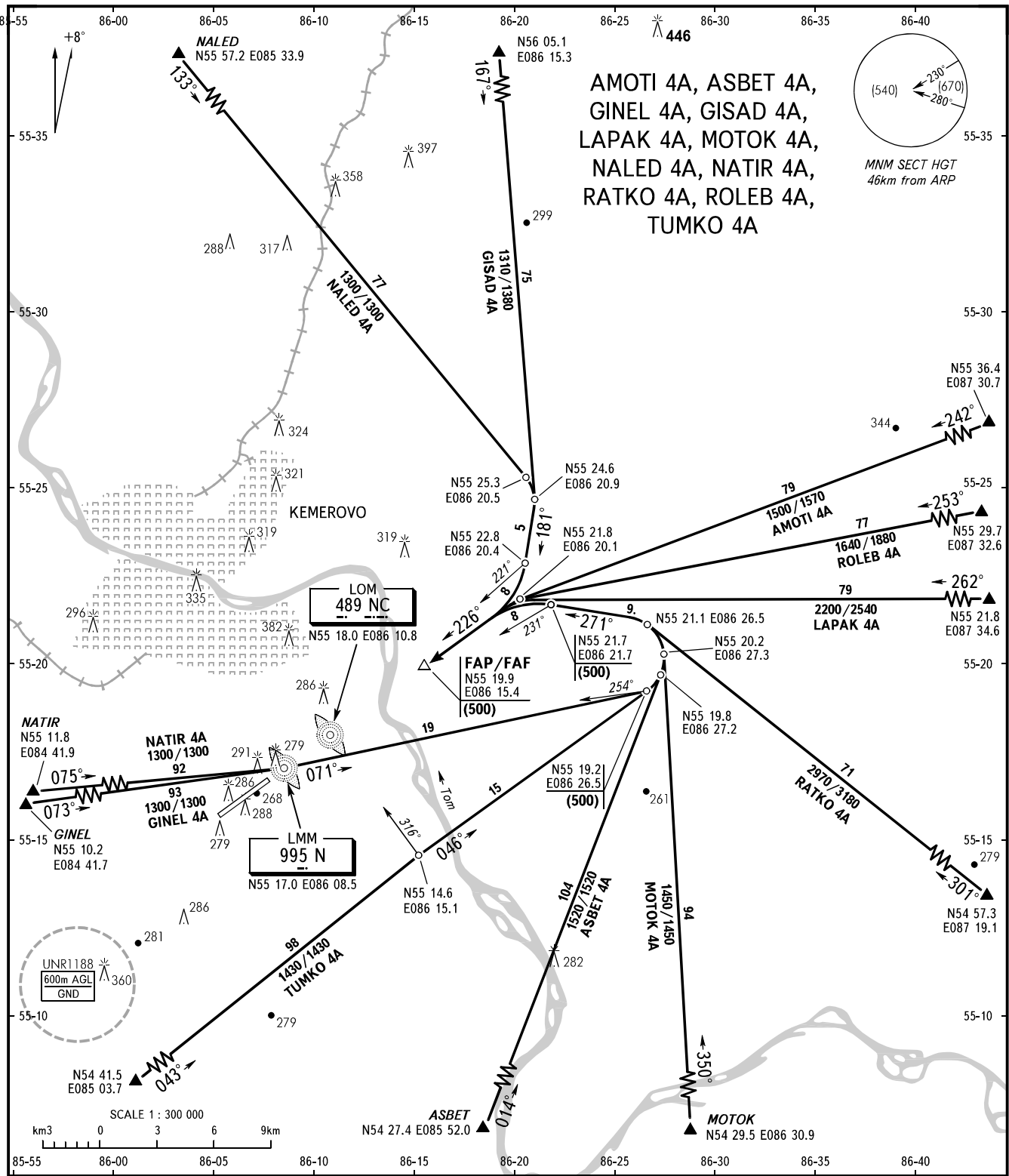


STANDARD ARRIVAL CHART
INSTRUMENT (STAR) - ICAO

TRANSITION
LEVEL: **1**

KEMEROVO, RUSSIA
KEMEROVO
RWY 23



APPROACH FL150 or below	125.5	1 TRANSITION LEVEL: - FL030 when atmospheric pressure is 760mm mercury column or above; - FL040 when atmospheric pressure is 759-733mm mercury column; - FL050 when atmospheric pressure is 732mm mercury column or less.
START	118.3	

BEARINGS AND TRACKS ARE MAGNETIC
ALTITUDES, HEIGHTS AND ELEVATIONS ARE IN METRES
DISTANCES ARE IN KILOMETRES