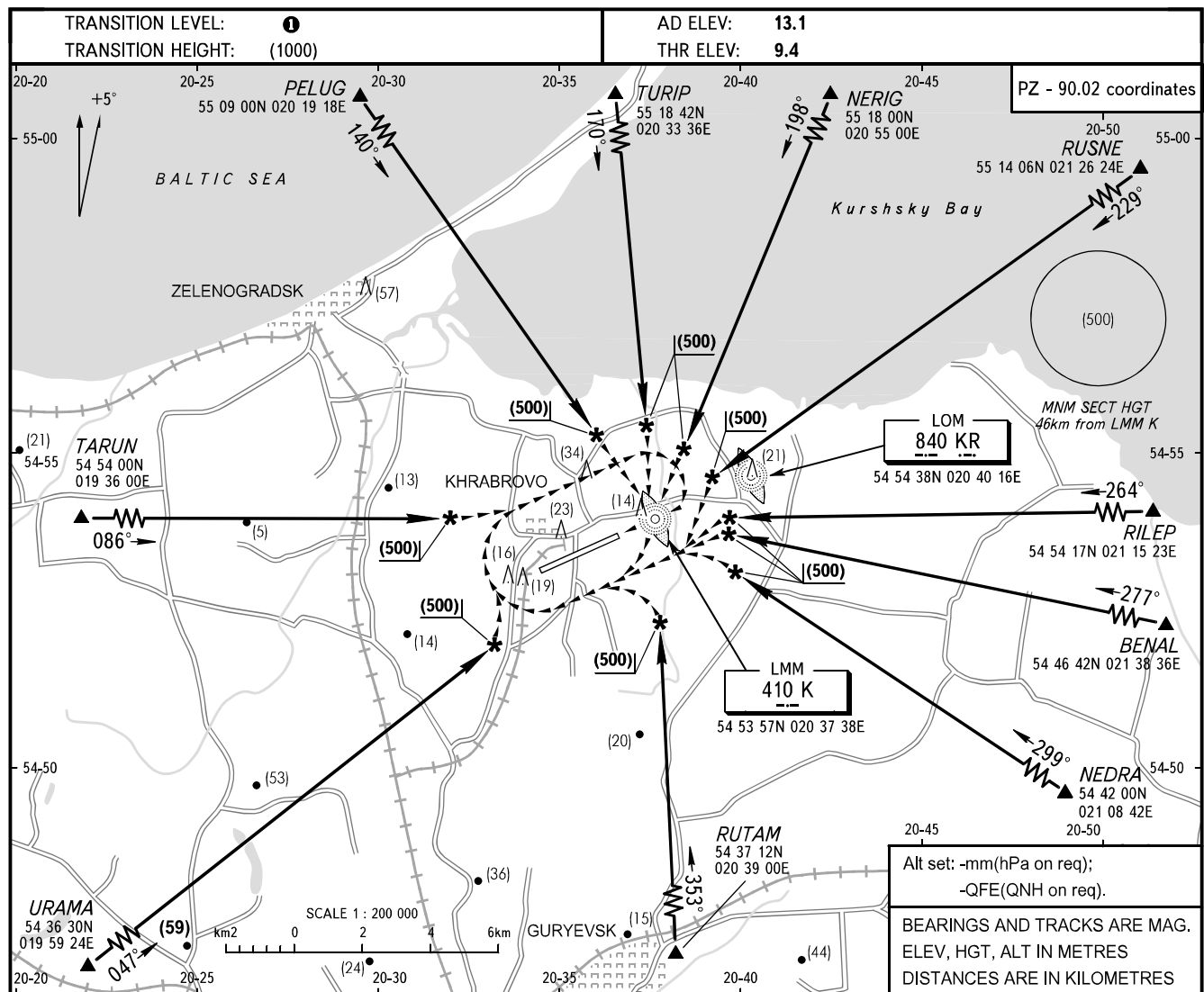


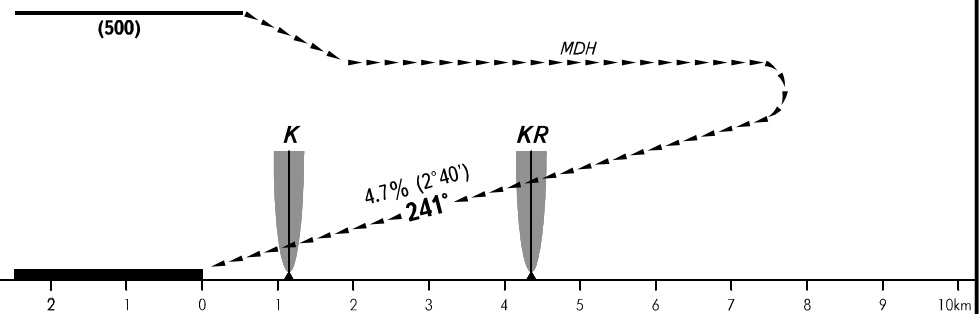
VISUAL
APPROACH
CHART - ICAO

TOWER 127.200

KALININGRAD, RUSSIA
KHRABROVO
CIRCLING RWY 24



MISSED APPROACH
Climb on track 241° to (400), then turn RIGHT to LOM KR climbing to (500), then according to IAC.



OCA/H		A	B	C	D
Visual Manoeuvring (Circling) Area		181(172)	181(172)	211(202)	215(206)
ACFT CAT		A	B	C	D
MET conditions	MDH, m	(180)	(180)	(210)	(210)
	Cloud base, m	(500)	(500)	(500)	(500)
	Visibility m	1600	2500	3000	4000

TRANSITION LEVEL:
- FL050 when atmospheric pressure is 742mm mercury column and above.
- FL060 when atmospheric pressure is less than 742mm and more than 715mm.

WARNING
The radiuses of visual manoeuvring (circling) area for ACFT categories are as follows:
A - 3110m
B - 4870m
C - 7790m
D - 9690m