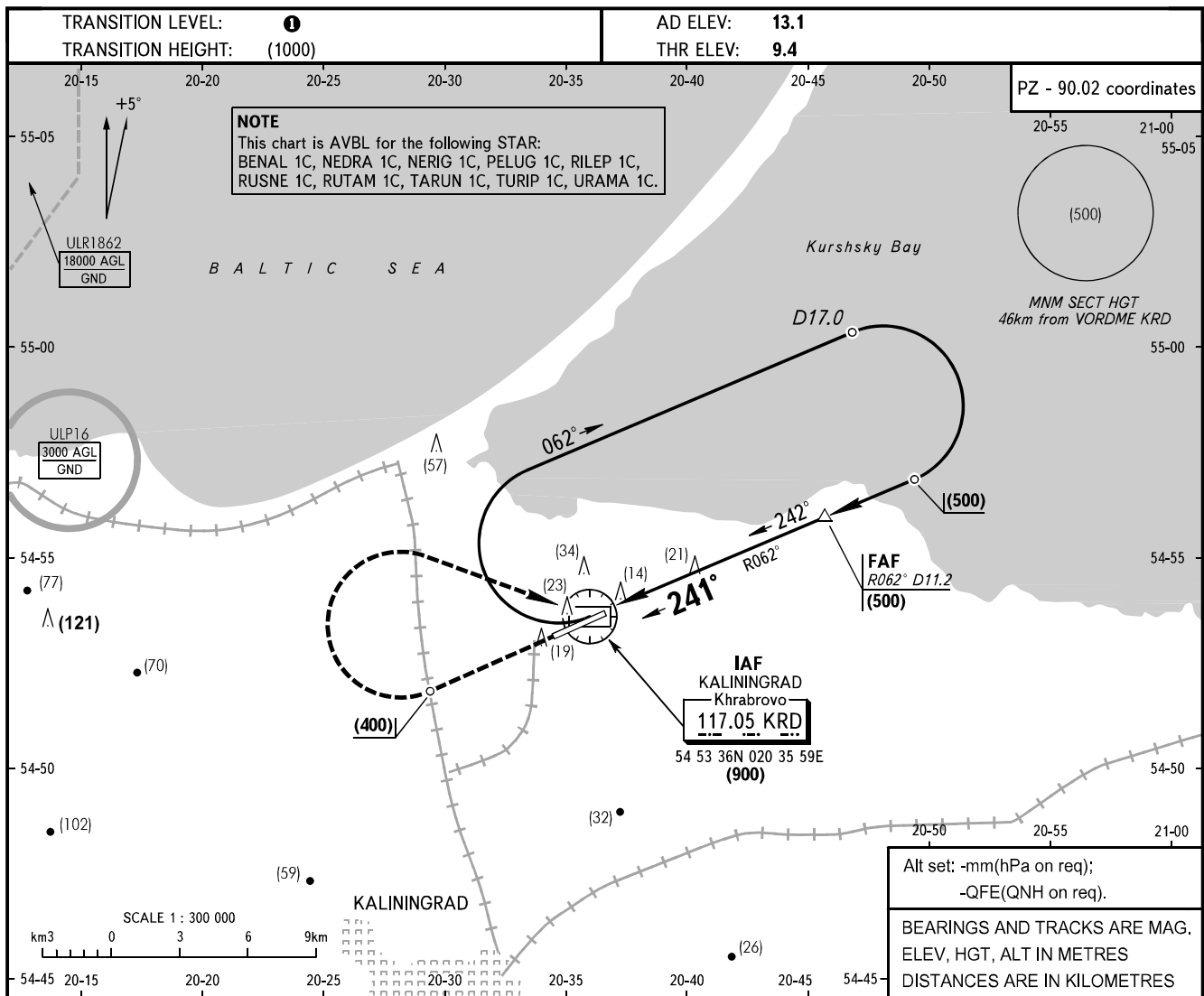


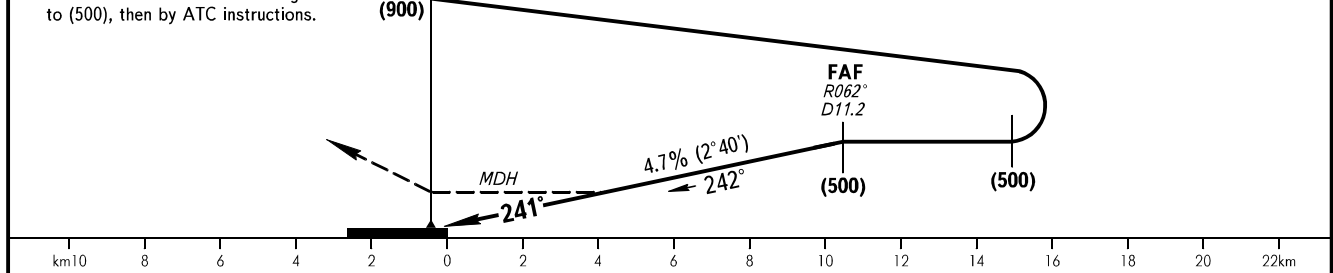
**INSTRUMENT
APPROACH
CHART - ICAO**

TOWER **127.200**

KALININGRAD, RUSSIA
KHRABROVO
VORDME RWY 24



MISSED APPROACH Climb on track 241° to (400), then turn RIGHT to VORDME climbing to (500), then by ATC instructions.	DME KR D	11.2	10.0	8.0	6.0	4.0	3.0	2.0
	HAT	(500)	(445)	(350)	(260)	(165)	(120)	(75)



OCA/H		A	B	C	D	① TRANSITION LEVEL: - FL050 when atmospheric pressure is 742mm mercury column or above. - FL060 when atmospheric pressure is less than 742mm or more than 715mm.							
Straight-in	VORDME	130(120)	130(120)	130(120)	130(120)	270	300	330	360	390	420	450	
	Approach												
GROUND SPEED		km/h	150	180	210	240	270	300	330	360	390	420	450
RATE OF DESCENT		m/s	1.9	2.3	2.7	3.1	3.5	3.9	4.3	4.7	5.0	5.4	5.8