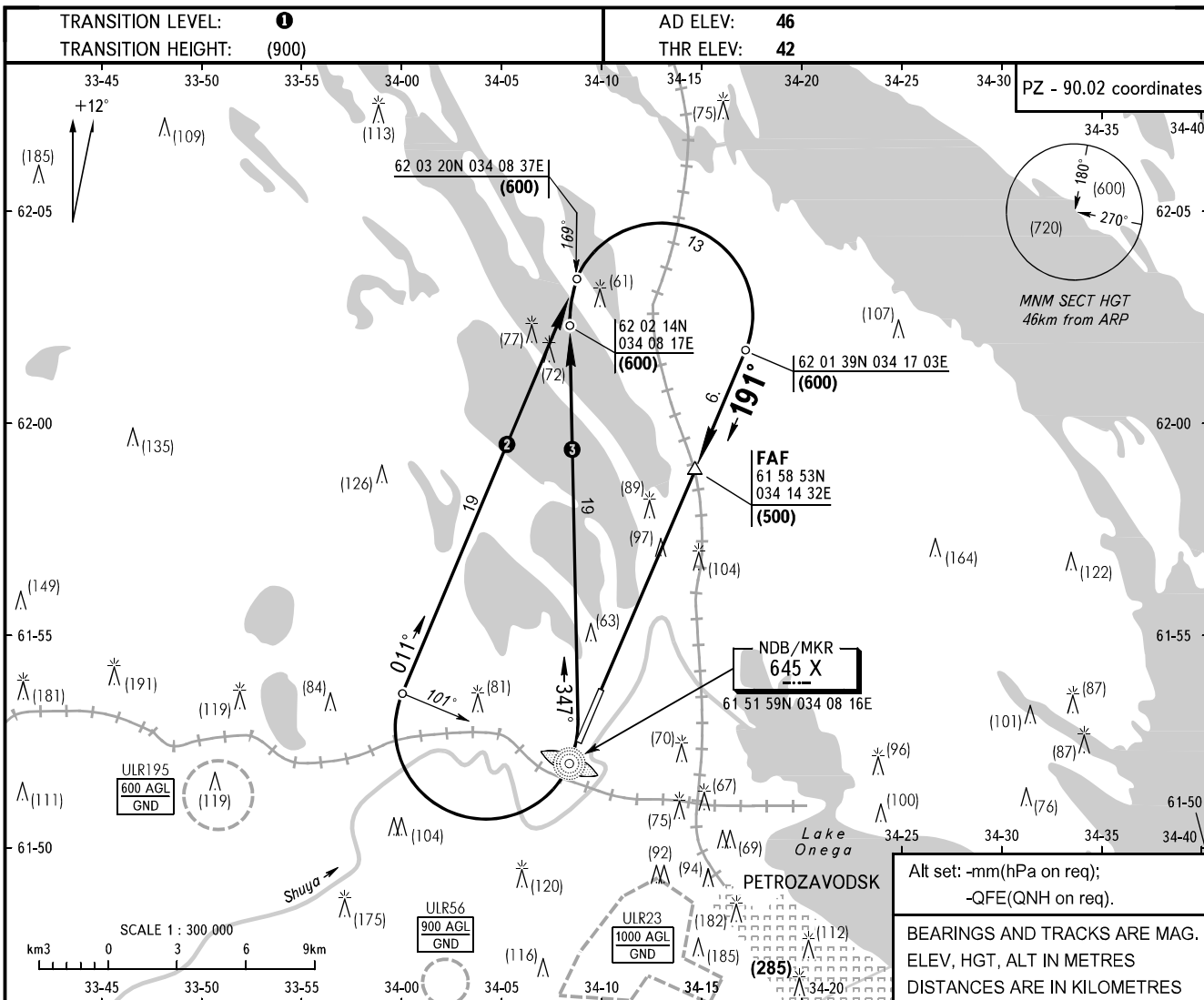


INSTRUMENT
APPROACH
CHART - ICAO

TOWER 128.000

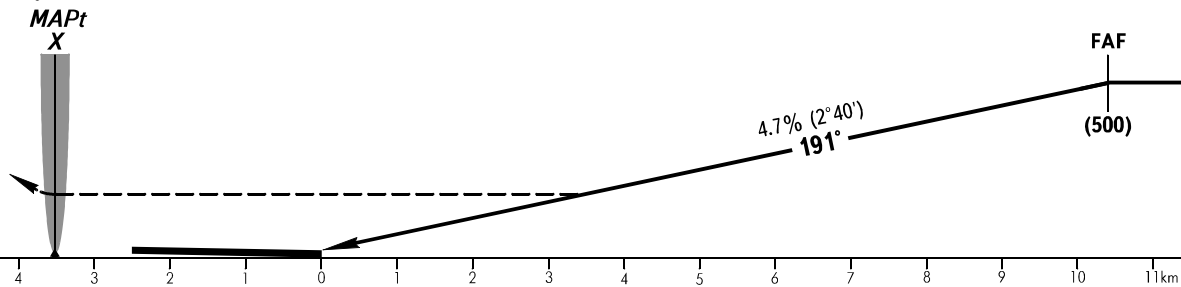
PETROZAVODSK, RUSSIA
BESOVETS
NDB RWY 19



MISSED APPROACH

After passing NDB/MKR X (HGT (200) or above) turn RIGHT onto track 011° climbing to (600), then according to chart.

FAF is fixed by TAR (61 53 07N 034 09 43E)



| OCA/H | | A | B | C | D | | | | | | | | |
|-----------------|----------|----------|----------|----------|----------|-----|-----|-----|-----|-----|-----|-----|-----|
| Straight-in | NDB | 221(179) | 221(179) | 221(179) | 221(179) | | | | | | | | |
| | With FAF | 296(254) | 296(254) | 296(254) | 296(254) | | | | | | | | |
| Approach | WO FAF | | | | | | | | | | | | |
| | | | | | | | | | | | | | |
| GROUND SPEED | | km/h | 150 | 180 | 210 | 240 | 270 | 300 | 330 | 360 | 390 | 420 | 450 |
| RATE OF DESCENT | | m/s | 2.0 | 2.4 | 2.7 | 3.1 | 3.5 | 3.9 | 4.3 | 4.7 | 5.1 | 5.5 | 5.9 |

- 1 TRANSITION LEVEL:
 - FL050 when atmospheric pressure is 733mm mercury column or above;
 - FL060 when atmospheric pressure is less than 733mm and is 706mm or above.
- 2 Approach from BERTA, BELOD, BUKUS, SELGA, STAVA.
- 3 Approach from KESKO.