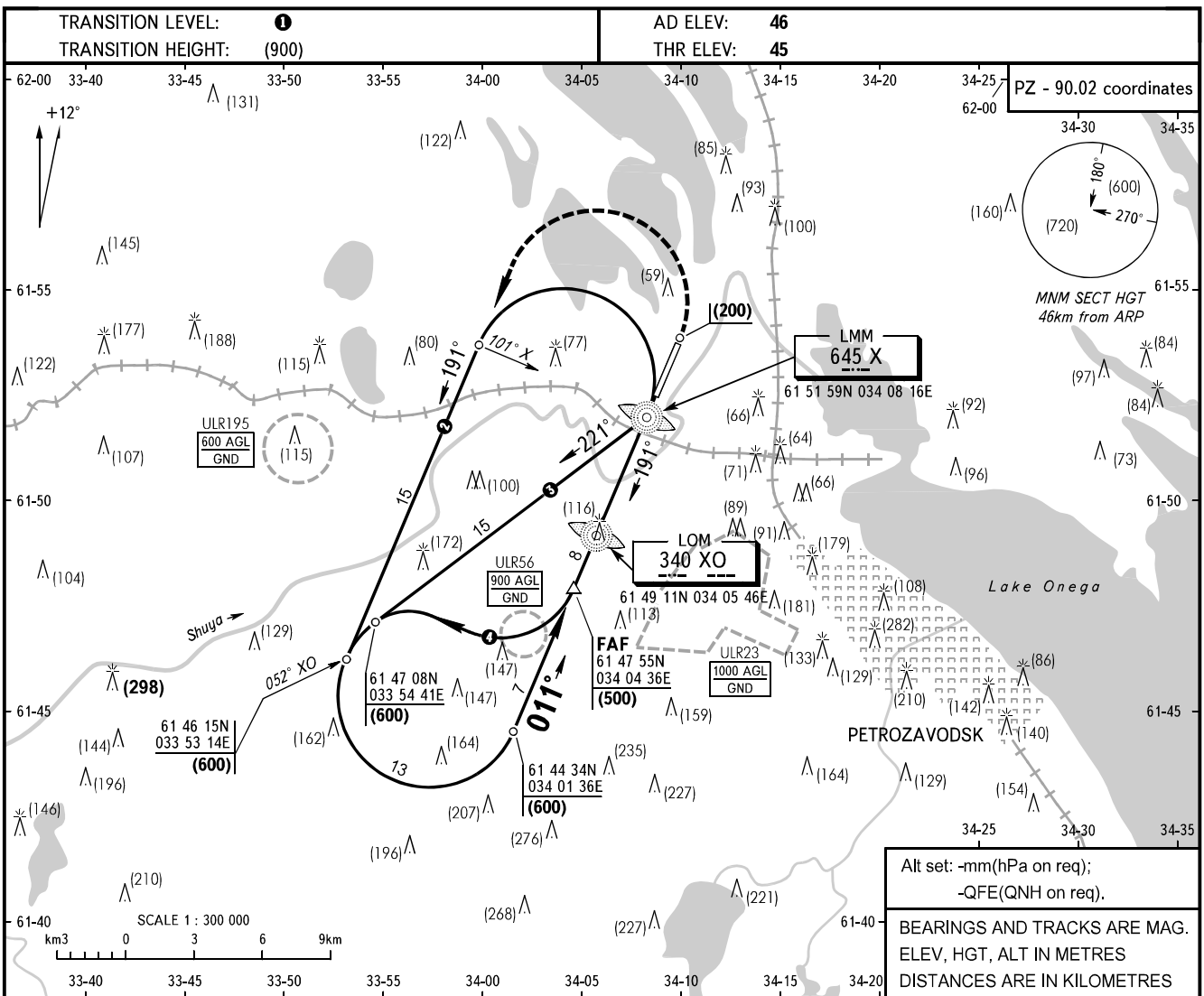


**INSTRUMENT  
APPROACH  
CHART - ICAO**

TOWER **128.000**

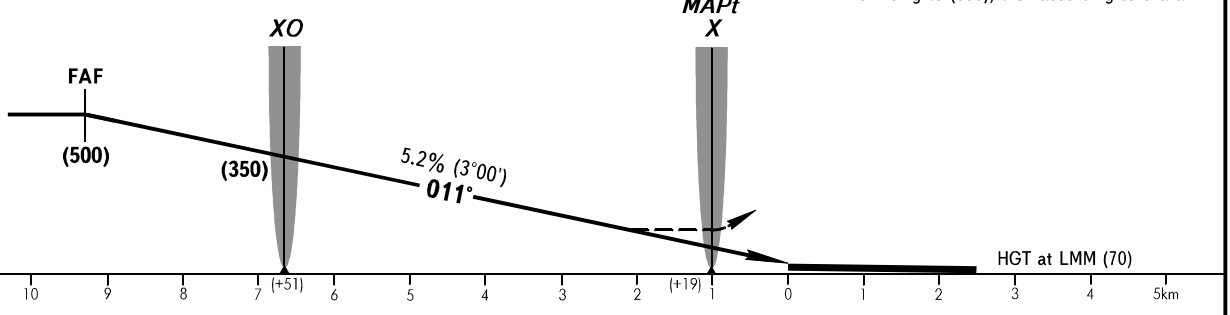
**PETROZAVODSK, RUSSIA**  
BESOVETS  
2 NDB RWY 01



Alt set: -mm(hPa on req);  
-QFE(QNH on req).  
BEARINGS AND TRACKS ARE MAG.  
ELEV, HGT, ALT IN METRES  
DISTANCES ARE IN KILOMETRES

FAF is fixed by TAR  
(61 53 07N 034 09 43E)

**MISSED APPROACH**  
Climb to (200), turn LEFT onto track 191° climbing to (600), then according to chart.



OCA/H		A	B	C	D								
Straight-in	2 NDB With FAF	172(126)	172(126)	172(126)	172(126)								
	WO FAF	172(126)	172(126)	172(126)	172(126)								
Approach													
GROUND SPEED		km/h	150	180	210	240	270	300	330	360	390	420	450
RATE OF DESCENT		m/s	2.2	2.6	3.1	3.5	3.9	4.3	4.8	5.2	5.6	6.1	6.5

- ① TRANSITION LEVEL:  
- FL050 when atmospheric pressure is 733mm mercury column or above;  
- FL060 when atmospheric pressure is less than 733mm and is 706mm or above.
- ② Approach from BERTA, KESKO, SELGA, STAVA.
- ③ Approach from BELOD.
- ④ Approach from BUKUS.