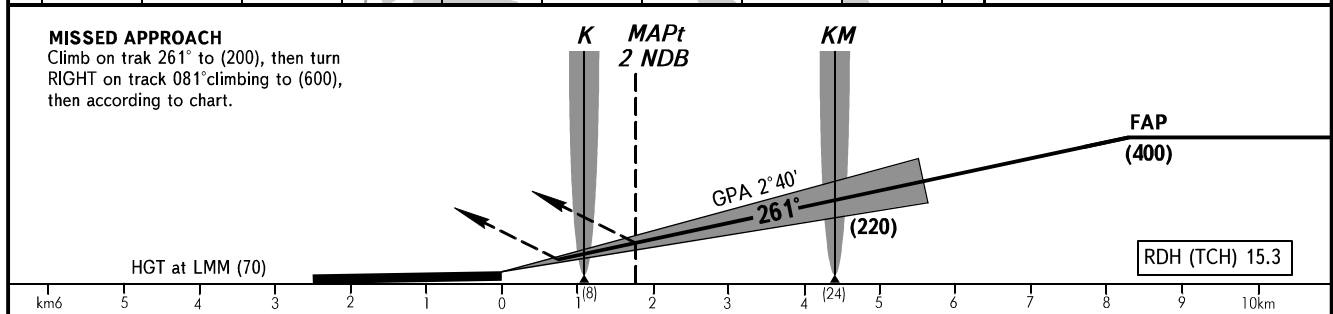
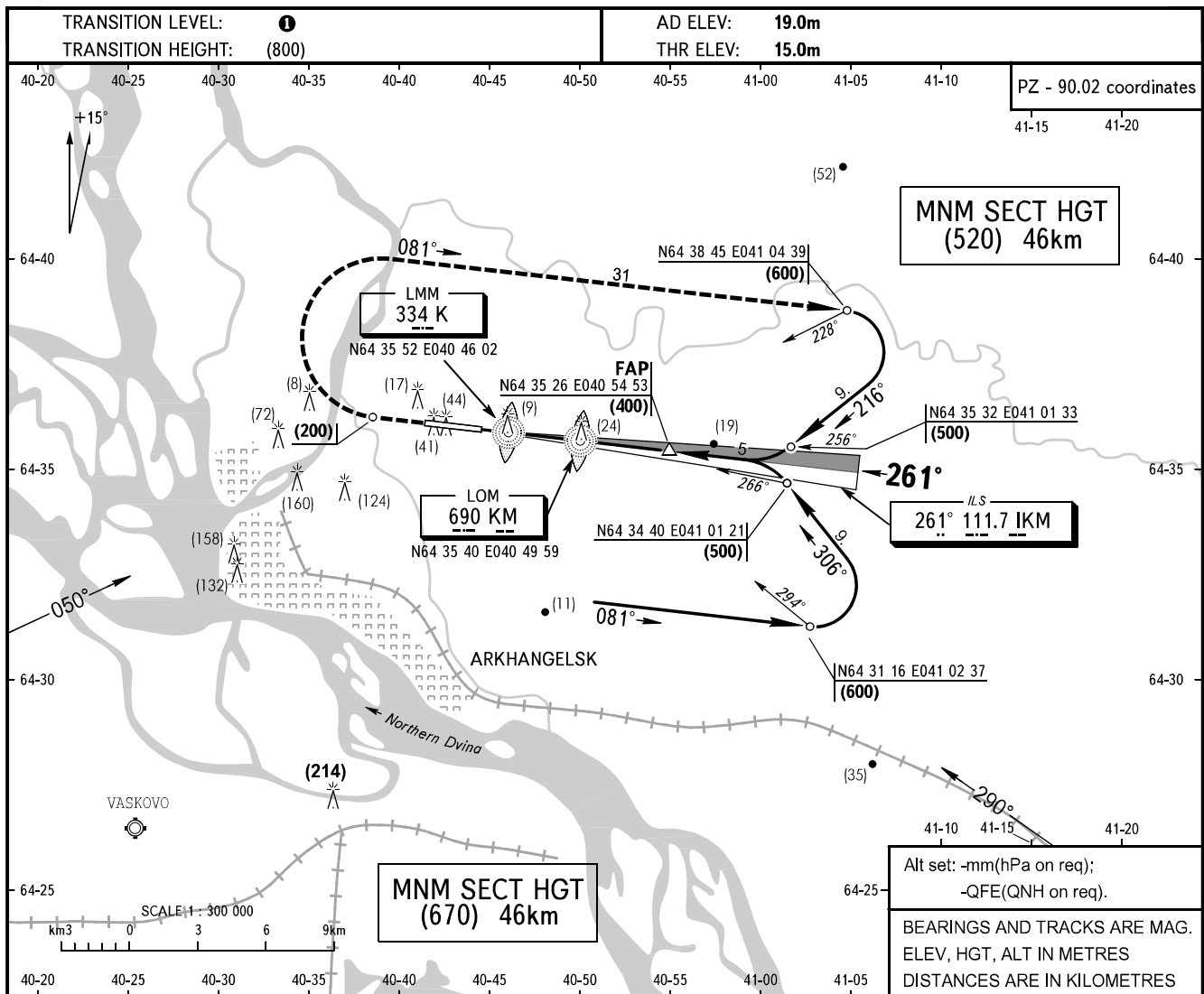


**INSTRUMENT  
APPROACH  
CHART - ICAO**

APPROACH 0430-1800 **122.0**  
TOWER (1800-0430 additionally  
seves as APPROACH) **121.8**

**ARKHANGELSK, RUSSIA**  
TALAGI  
ILS, 2 NDB RWY 26



OCA/H		A	B	C	D								
Straight-in Approach	<b>CAT I</b>	57(42)	59(44)	62(47)	65(50)								
	<b>2 NDB</b>	113(98)	113(98)	113(98)	113(98)								
Circle-to-land	<b>MDA/H</b>	165(150)	235(220)	305(290)	305(290)								
	<b>CLD base, m</b>	200	450	450	450								
	<b>VIS, m</b>	1600	4000	4000	4000								
	<b>Circling radius</b>	3120	4980	7850	9790								
GROUND SPEED		km/h	150	180	210	240	270	300	330	360	390	420	450
LOM-THR 4400m		min:s	1.46	1.28	1.16	1.06	0.59	0.53	0.48	0.44	0.41	0.38	0.35
RATE OF DESCENT (Grad. 4.7%)		m/s	2.0	2.3	2.7	3.1	3.5	3.9	4.2	4.6	5.0	5.4	5.8

**①** - FL040 when atmospheric pressure is 760mm mercury column or above;  
- FL050 when atmospheric pressure is less than 760mm and is 733mm or above;  
- FL060 when atmospheric pressure is less than 733mm.

**PRIORITY APPROACH:**  
1. After crossing LOM proceed on track 261° for 1min at the same HGT.  
2. Turn RIGHT onto track 081° with descent up to the traffic circuit height and approach according to chart.