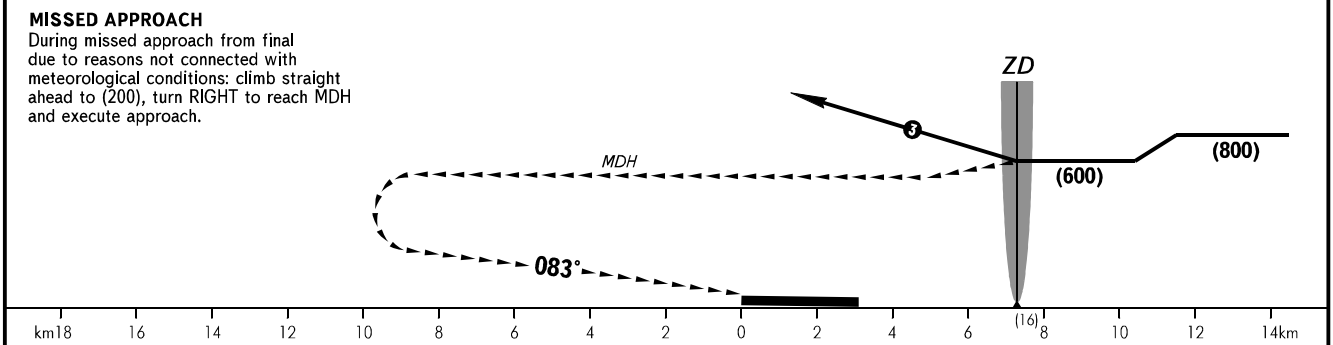
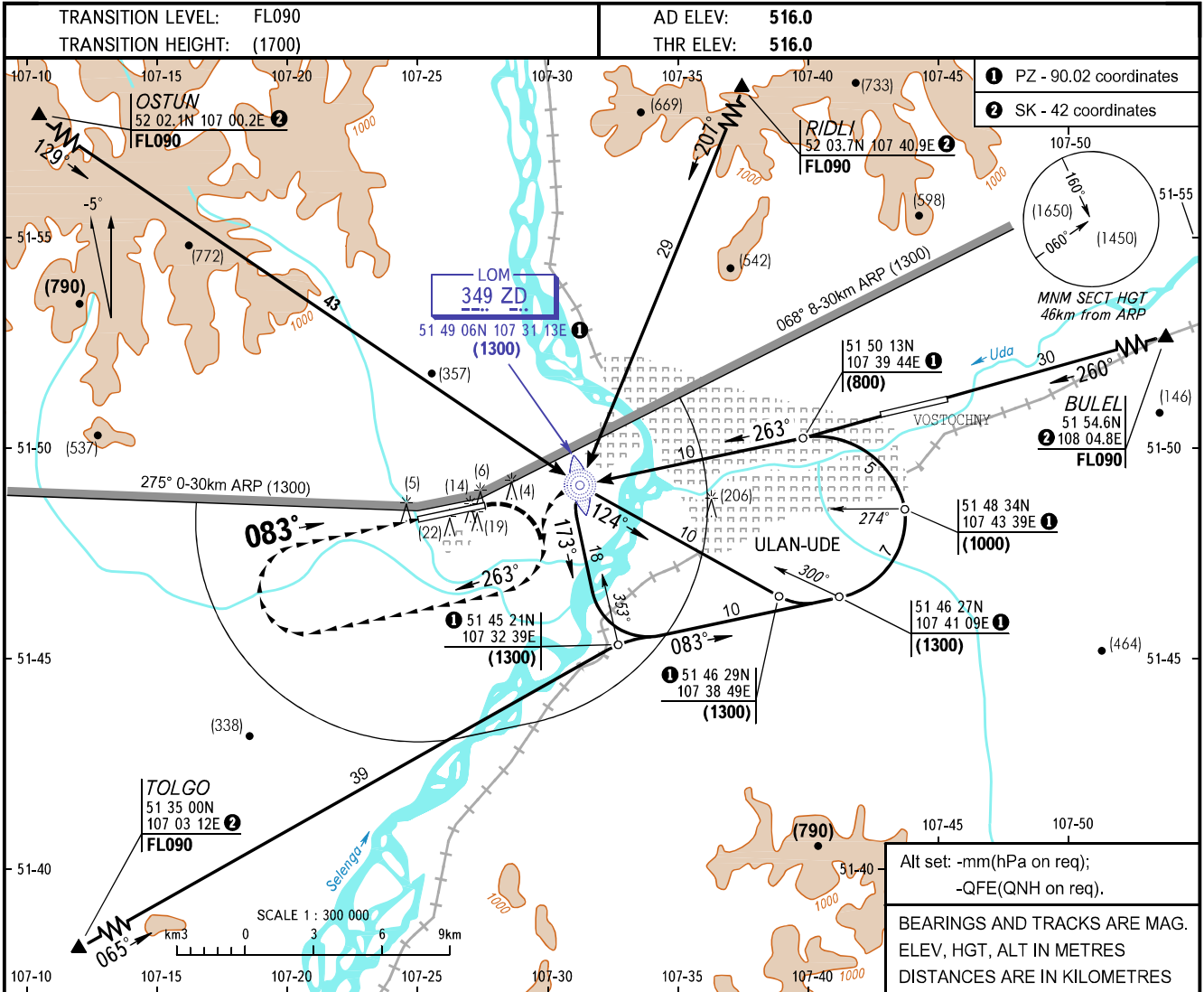


**VISUAL
APPROACH
CHART - ICAO**

APPROACH TOWER	129.300
TOWER	118.100

**ULAN-UDE, RUSSIA
MUKHINO
CIRCLING RWY 08**



OCA/H		A	B	C	D
Visual Manoeuvring (Circling) Area	RWY 08	630(114)	659(143)	690(174)	960(444)
ACFT CAT		A	B	C	D
MET conditions	MDH,m	120	150	180	450
	Cloud base,m	600	600	600	600
	Visibility, m	5000	5000	8000	10000

WARNING:

- There is ULAN-UDE/Vostochny aerodrome in the vicinity of base leg, landing track is 082°-262°.
- Visual manoeuvring to the north of RWY is PROHIBITED.

③ Missed approach: turn LEFT onto track 083° climbing to (1300), then according to the approach pattern.

CHANGE: New chart