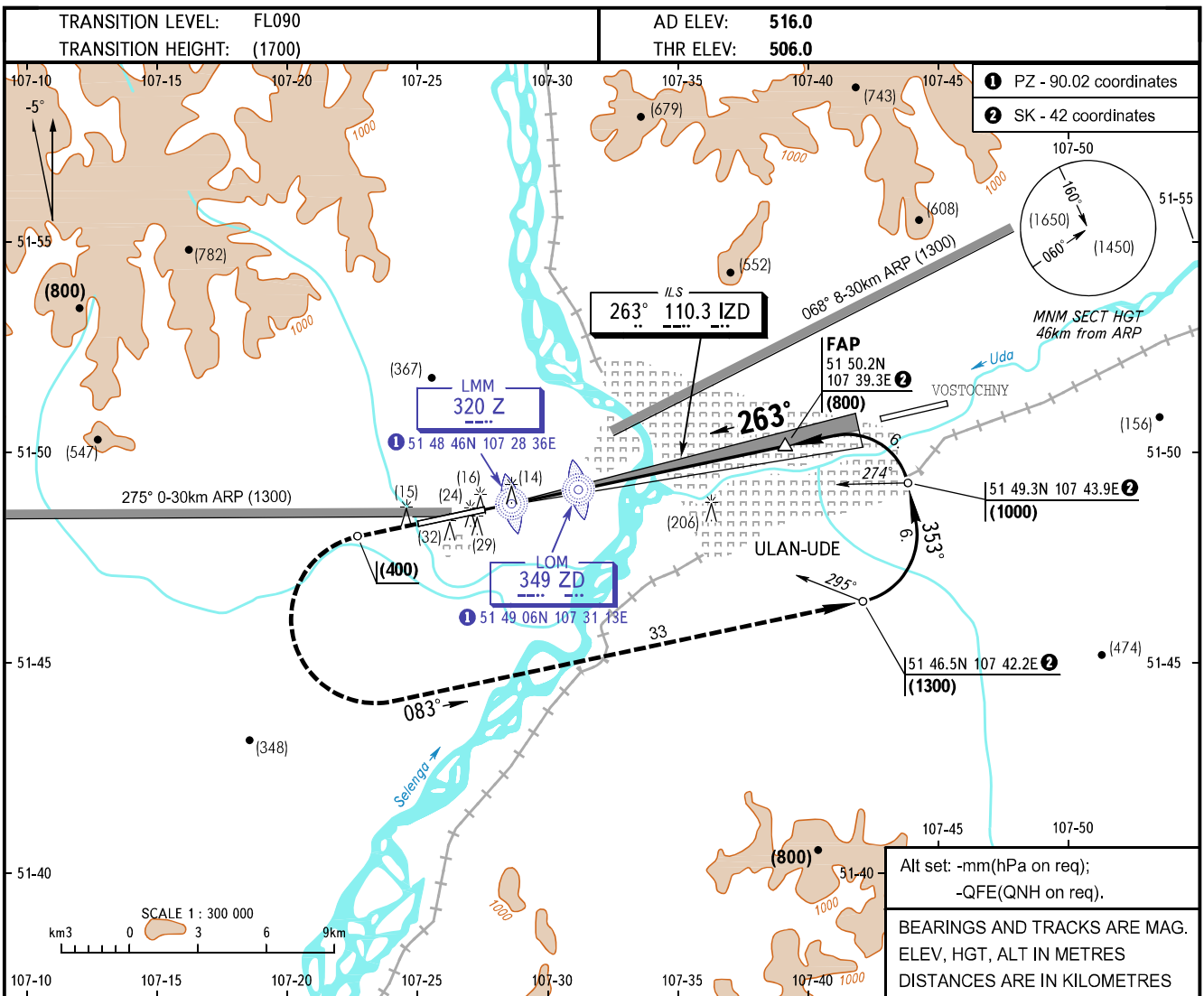


**INSTRUMENT
APPROACH
CHART - ICAO**

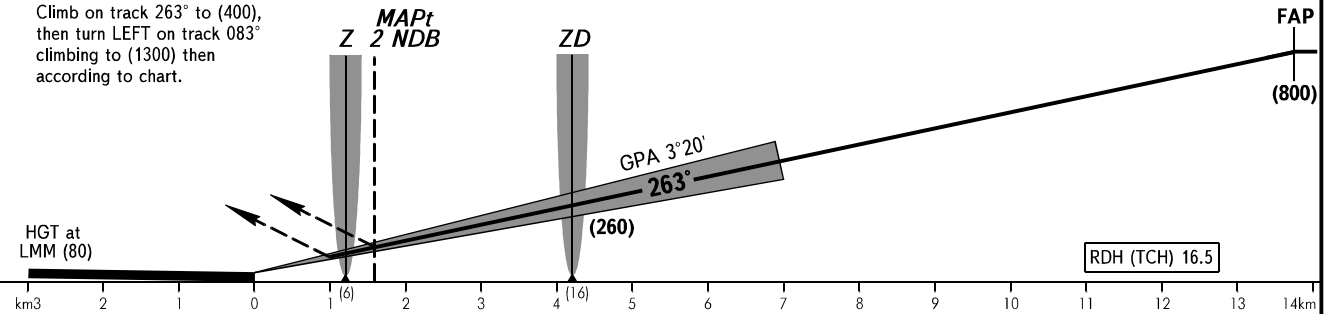
APPROACH **129.300**
TOWER **118.100**

**ULAN-UDE, RUSSIA
MUKHINO
ILS, 2 NDB, NDB RWY 26**



Alt set: -mm(hPa on req);
-QFE(QNH on req).
BEARINGS AND TRACKS ARE MAG.
ELEV, HGT, ALT IN METRES
DISTANCES ARE IN KILOMETRES

MISSED APPROACH
Climb on track 263° to (400),
then turn LEFT on track 083°
climbing to (1300) then
according to chart.



OCA/H		A	B	C	D
Straight-in	ILS	560(54)	564(58)	567(61)	570(64)
	2 NDB	610(104)	610(104)	610(104)	610(104)
Approach	NDB(LOM)	805(299)	805(299)	805(299)	805(299)

WARNING
There is ULAN-UDE/Vostochny
aerodrome in the vicinity of base
leg, landing track is 082°-262°.

GROUND SPEED	km/h	150	180	210	240	270	300	330	360	390	420	450
LOM-THR 4200m	min:sec	1.41	1.24	1.12	1.03	0.56	0.50	0.46	0.42	0.39	0.36	0.34
RATE OF DESCENT (Grad 5.8%)	m/s	2.4	2.9	3.4	3.9	4.4	4.8	5.3	5.8	6.3	6.8	7.3