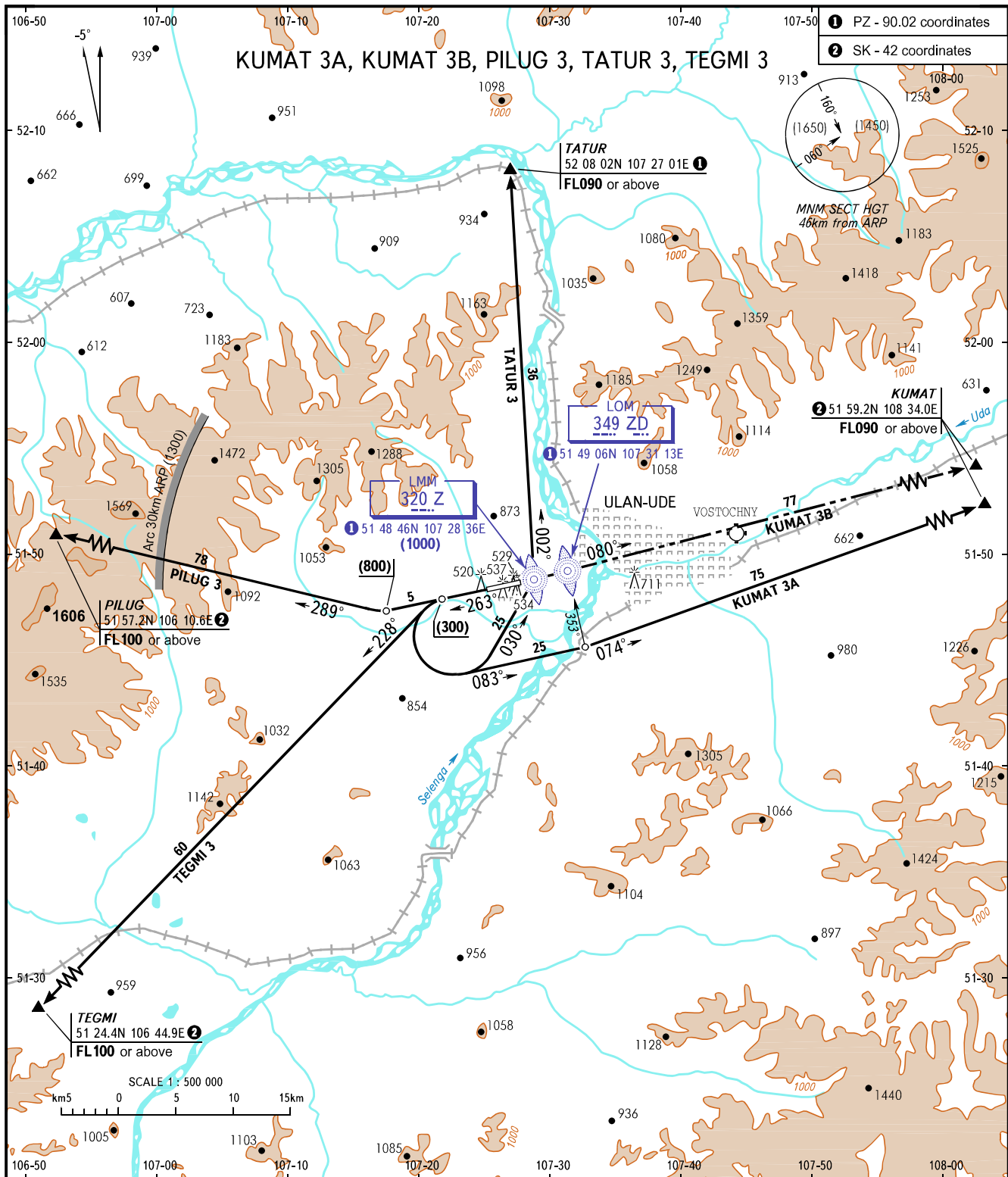


STANDARD DEPARTURE CHART
INSTRUMENT (SID) - ICAO

TRANSITION
HEIGHT : (1700)

ULAN-UDE, RUSSIA
MUKHINO
RWY 26



TOWER 118.100
APPROACH 129.300

WARNING:

- In case of turbulence ACFT shall execute aerodrome traffic circuit after take-off on RWY heading 263°.
- For departure via corridors 5, 6 the initial turn shall be executed not further than 16km from ARP. If unable to reach (800), the aircraft shall turn LEFT onto track 083° MAG climbing to (800), then turn LEFT onto departure route climbing to assigned altitude.

MINIMUM CLIMB GRADIENT

Rate of climb (m/s)	Ground Speed (km/h)							
	200	240	280	320	360	400	500	600
PILUG 3 5.0%	2.8	3.2	3.9	4.4	5.0	5.6	7.0	8.0

BEARINGS AND TRACKS ARE MAGNETIC
ALTITUDES, HEIGHTS AND ELEVATIONS ARE IN METRES
DISTANCES ARE IN KILOMETRES