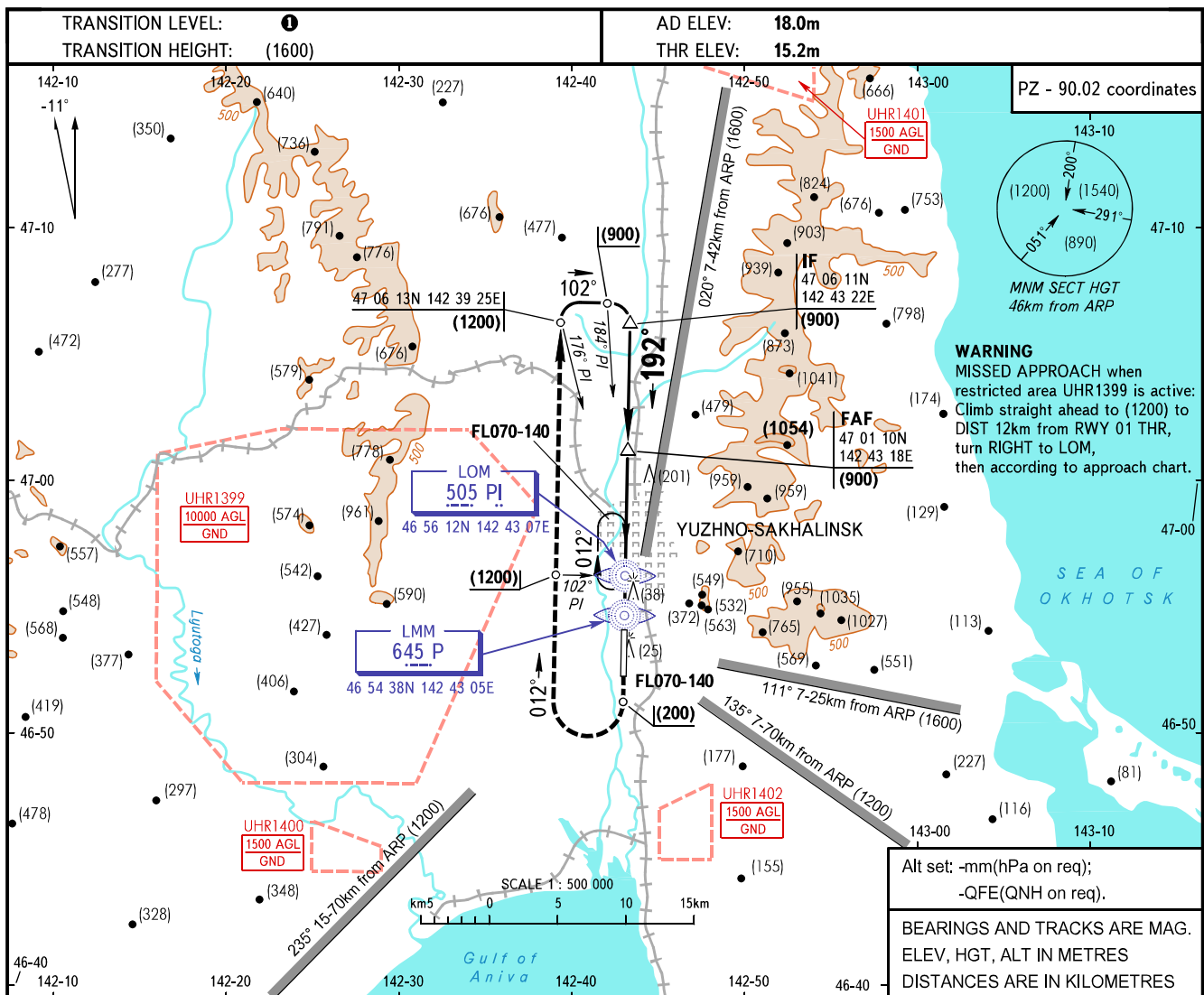


INSTRUMENT
APPROACH
CHART - ICAO

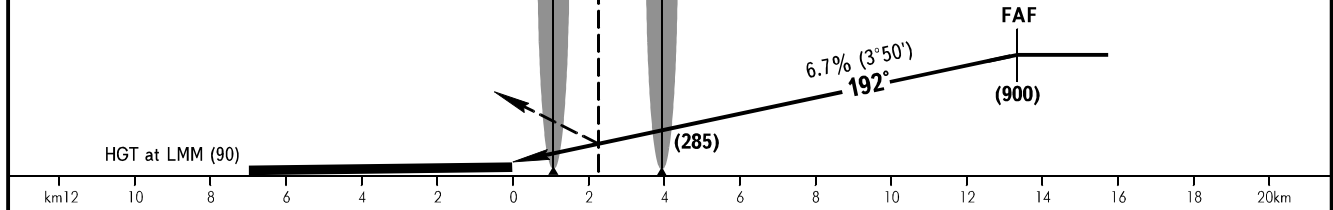
KRUG 120.600

YUZHNO-SAKHALINSK, RUSSIA
KHOMUTOVO
2 NDB, NDB(LOM) RWY 19



MISSED APPROACH
Climb on track 192° to (200), then turn RIGHT on track 012° climbing to (1200) abeam LOM PI, then according to chart, or by ATC proceed to holding area.

FAF is AZM 012° D14.5 from TAR (46 53 15N 142 42 50E).



OCA/H		A	B	C	D								
Straight-in Approach	2 NDB	With FAF	127(112)	127(112)	127(112)	127(112)							
		WO FAF	642(627)	642(627)	642(627)	642(627)							
	NDB(LOM)	With FAF	348(333)	348(333)	348(333)	348(333)							
		WO FAF	642(627)	642(627)	642(627)	642(627)							
GROUND SPEED		km/h	150	180	210	240	270	300	330	360	390	420	450
LOM-THR 4050m		min:sec	1.37	1.21	1.09	1.01	0.54	0.49	0.44	0.41	0.37	0.35	0.32
RATE OF DESCENT		m/s	2.8	3.3	3.9	4.4	5.0	5.6	6.1	6.7	7.2	7.8	8.3

1 TRANSITION LEVEL:
- FL070 when atmospheric pressure is 758mm mercury column or above;
- FL080 when atmospheric pressure is less than 758mm and is 731mm mercury column or above;
- FL090 when atmospheric pressure is less than 731mm mercury column.