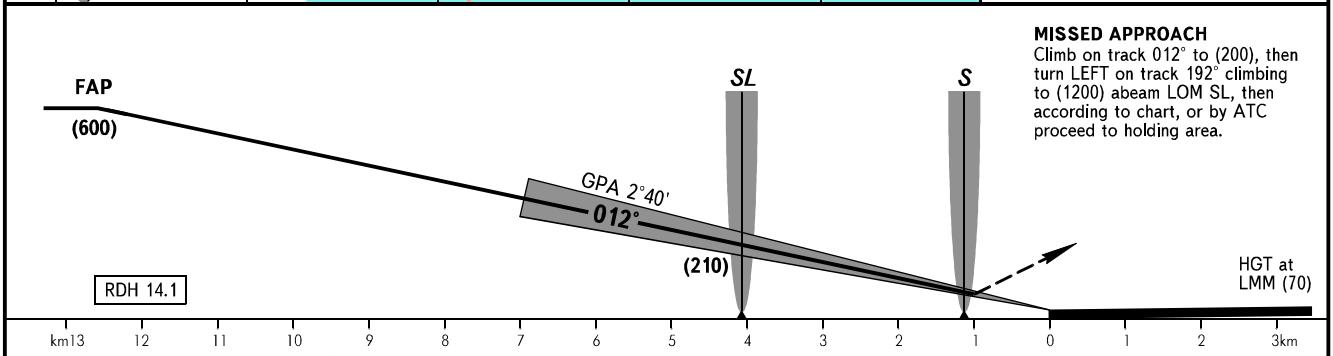
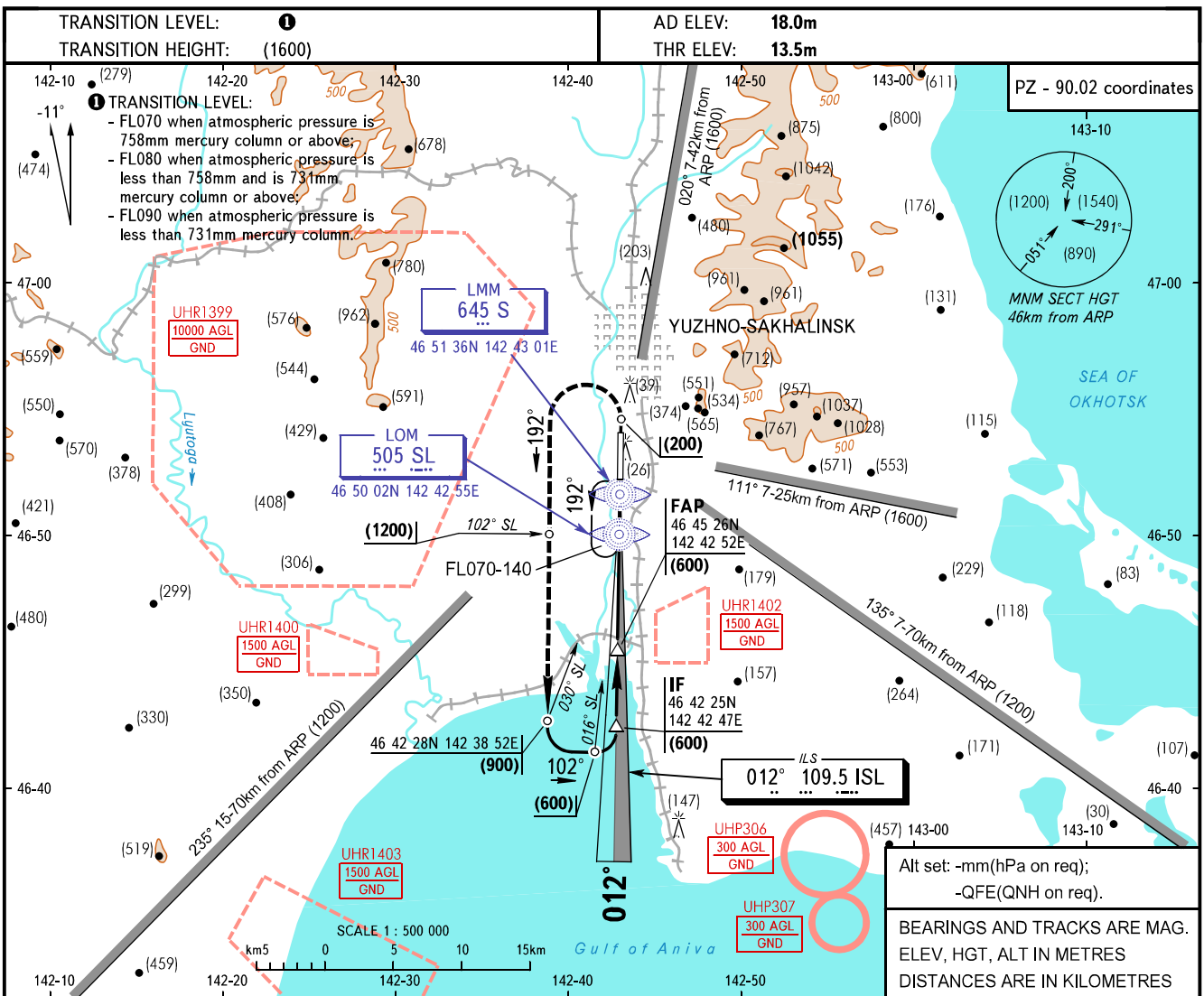


**INSTRUMENT
APPROACH
CHART - ICAO**

KRUG **120.600**

**YUZHNO-SAKHALINSK, RUSSIA
KHOMUTOVO
ILS RWY 01**



OCA/H		A	B	C	D
Straight-in	ILS	58(43)	60(45)	63(48)	67(52)
	Approach				

WARNING:
1. MISSED APPROACH when restricted area UHR1399 is active: Climb straight ahead to (1200) to DIST 12km from RWY 19 THR, turn LEFT to LOM, then according to approach chart.
2. LOM SL is located at 75m west of RWY centre line.

GROUND SPEED	km/h	150	180	210	240	270	300	330	360	390	420	450
LOM-THR 4050m	min:sec	1.37	1.21	1.09	1.01	0.54	0.49	0.44	0.41	0.37	0.35	0.32
RATE OF DESCENT	m/s	2.0	2.4	2.7	3.1	3.5	3.9	4.3	4.7	5.1	5.5	5.9

CHANGE: QDM