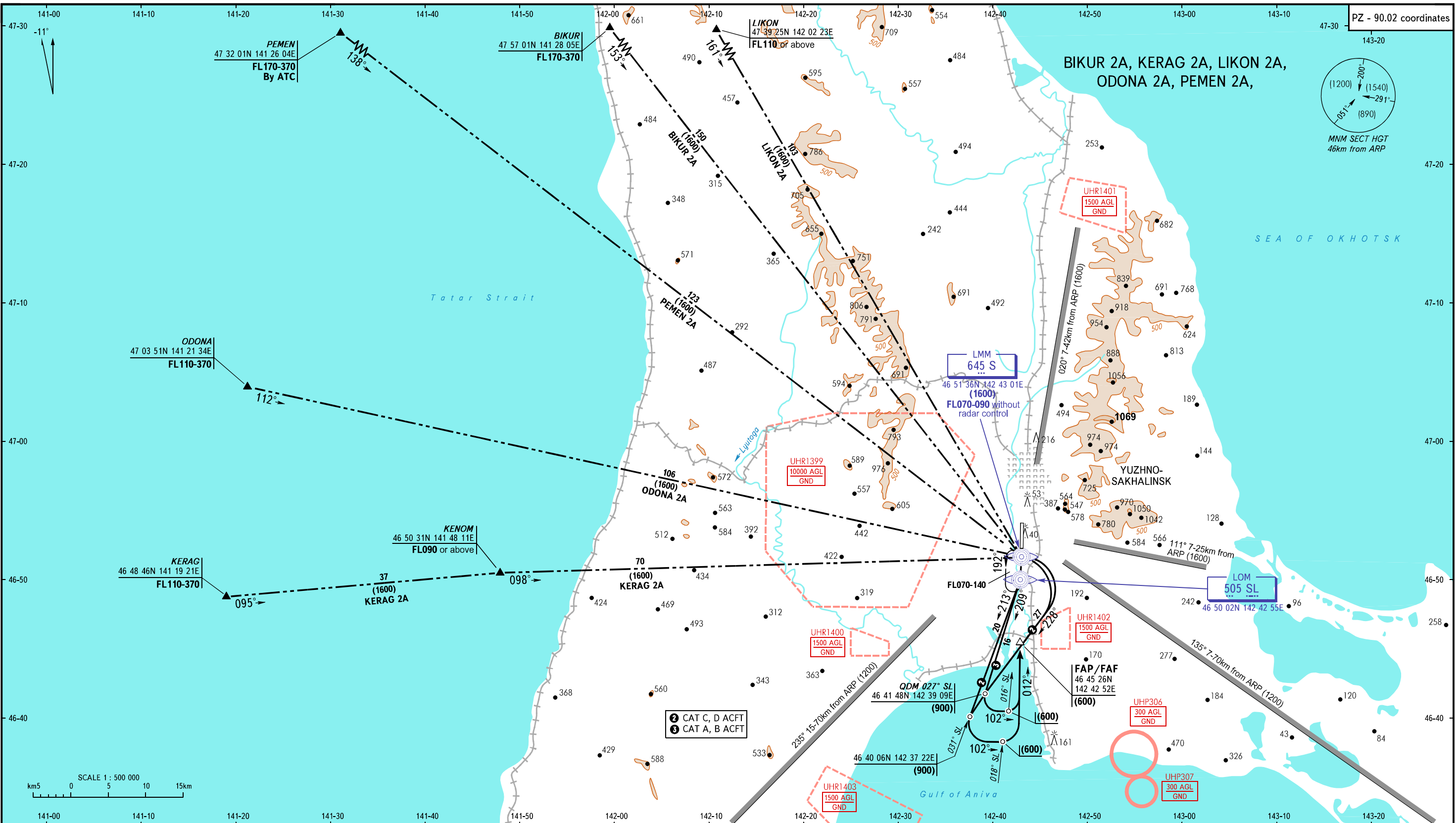


STANDARD ARRIVAL CHART
INSTRUMENT (STAR) - ICAO

YUZHNO-SAKHALINSK, RUSSIA
KHOMUTOVO
RWY 01

TRANSITION
LEVEL: ①

PZ - 90.02 coordinates



KRUG 120.600

① TRANSITION LEVEL:
 - FL070 when atmospheric pressure is 758mm mercury column or above;
 - FL080 when atmospheric pressure is less than 758mm and is 731mm mercury column or above;
 - FL090 when atmospheric pressure is less than 731mm mercury column.

BEARINGS AND TRACKS ARE MAGNETIC
ALTITUDES, HEIGHTS AND ELEVATIONS ARE IN METRES
DISTANCES ARE IN KILOMETRES