

YUZHNO-SAKHALINSK, RUSSIA

KHOMUTOVO

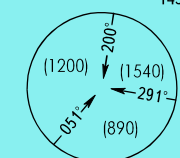
RWY 01

AIP
RUSSIA AND CIS

STANDARD DEPARTURE CHART
INSTRUMENT (SID) - ICAO

TRANSITION
HEIGHT : (1600)

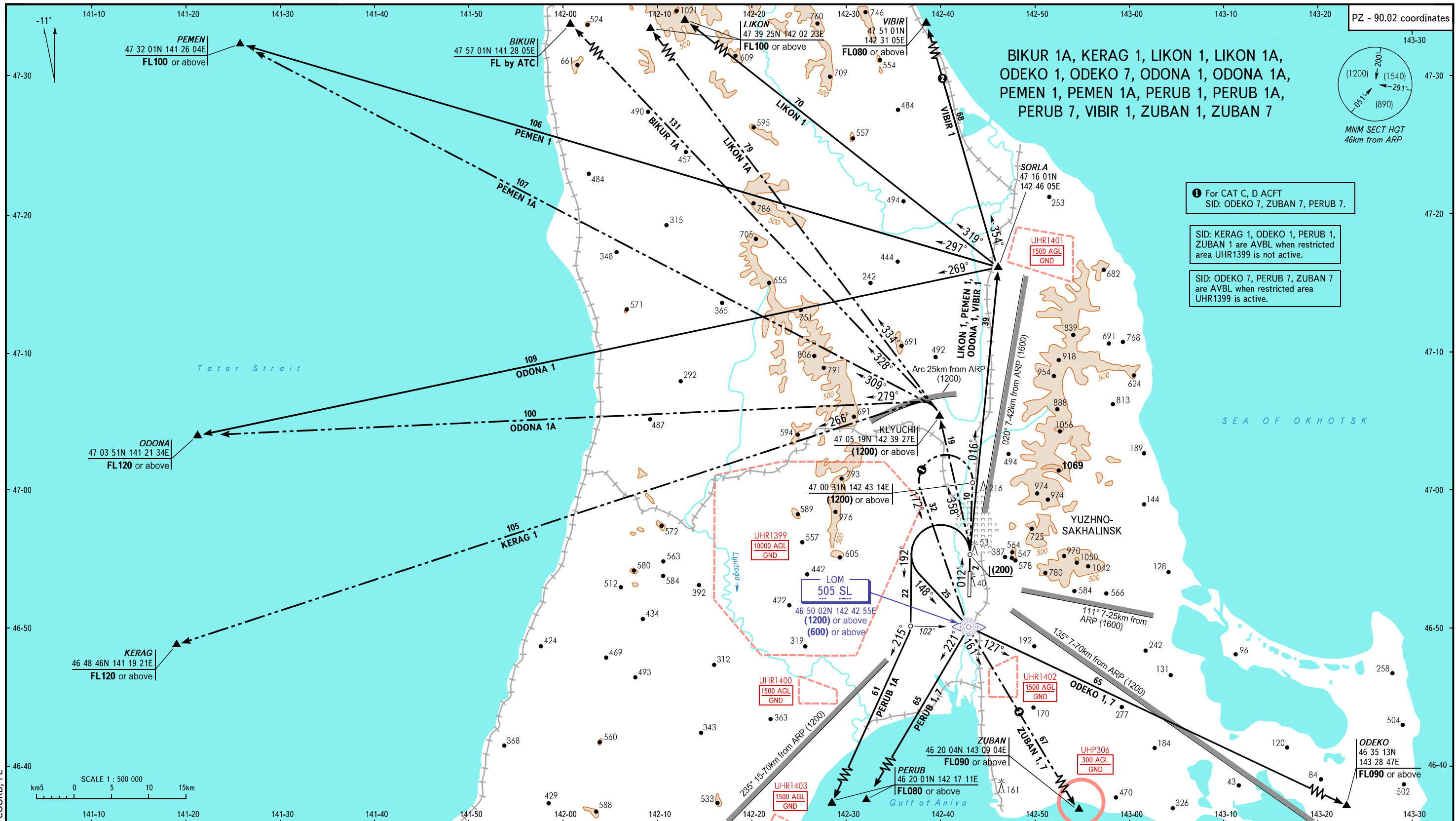
PZ - 90.02 coordinates



MNM SECT HGT
46km from ARP

BIKUR 1A, KERAG 1, LIKON 1, LIKON 1A,
ODEKO 1, ODEKO 7, ODONA 1, ODONA 1A,
PEMEN 1, PEMEN 1A, PERUB 1, PERUB 1A,
PERUB 7, VIBIR 1, ZUBAN 1, ZUBAN 7

- ① For CAT C, D ACFT
SID: ODEKO 7, ZUBAN 7, PERUB 7.
- SID: KERAG 1, ODEKO 1, PERUB 1,
ZUBAN 1 are AVBL when restricted
area UHR1399 is not active.
- SID: ODEKO 7, PERUB 7, ZUBAN 7
are AVBL when restricted area
UHR1399 is active.



SCALE 1 : 500 000
km 0 5 10 15

KRUG 120.600

② Only for Russian users of airspace.

BEARINGS AND TRACKS ARE MAGNETIC
ALTITUDES, HEIGHTS AND ELEVATIONS ARE IN METRES
DISTANCES ARE IN KILOMETRES

CHANGE: CRP ODEKO COORD, FL