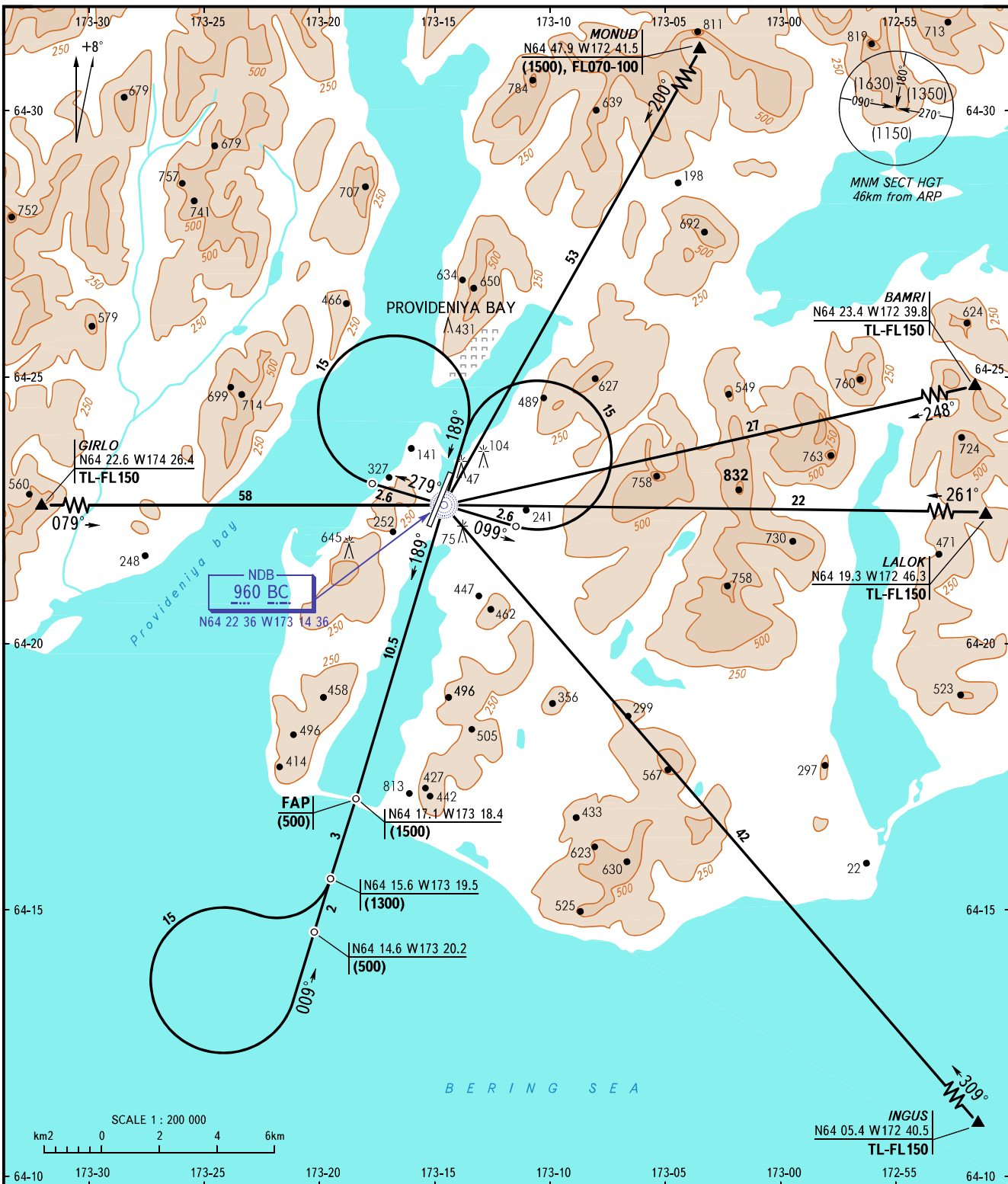


STANDARD ARRIVAL CHART
INSTRUMENT (STAR) - ICAO

PROVIDENIYA BAY, RUSSIA
PROVIDENIYA BAY
RWY 01

TRANSITION
LEVEL : **1**



PROVIDENIYA BAY TOWER **119.3**

- 1** TRANSITION LEVEL:
- FL070 when atmospheric pressure is 758mm mercury column or above;
 - FL080 when atmospheric pressure is less than 758mm and is 731mm or above;
 - FL090 when atmospheric pressure is less than 731mm mercury column.

WARNING:

1. During NDB approach and if unable to execute a visual flight when descending to (850) according to the pattern, make a left turn to NDB climbing to (1500) or above.
2. When visual reference is lost before reaching the coastline after the procedure turn, climb to (900), turn left onto track 005° MAG, then as directed.

BEARINGS AND TRACKS ARE MAGNETIC
ALTITUDES, HEIGHTS AND ELEVATIONS ARE IN METRES
DISTANCES ARE IN KILOMETRES