

AERODROME
CHART - ICAO

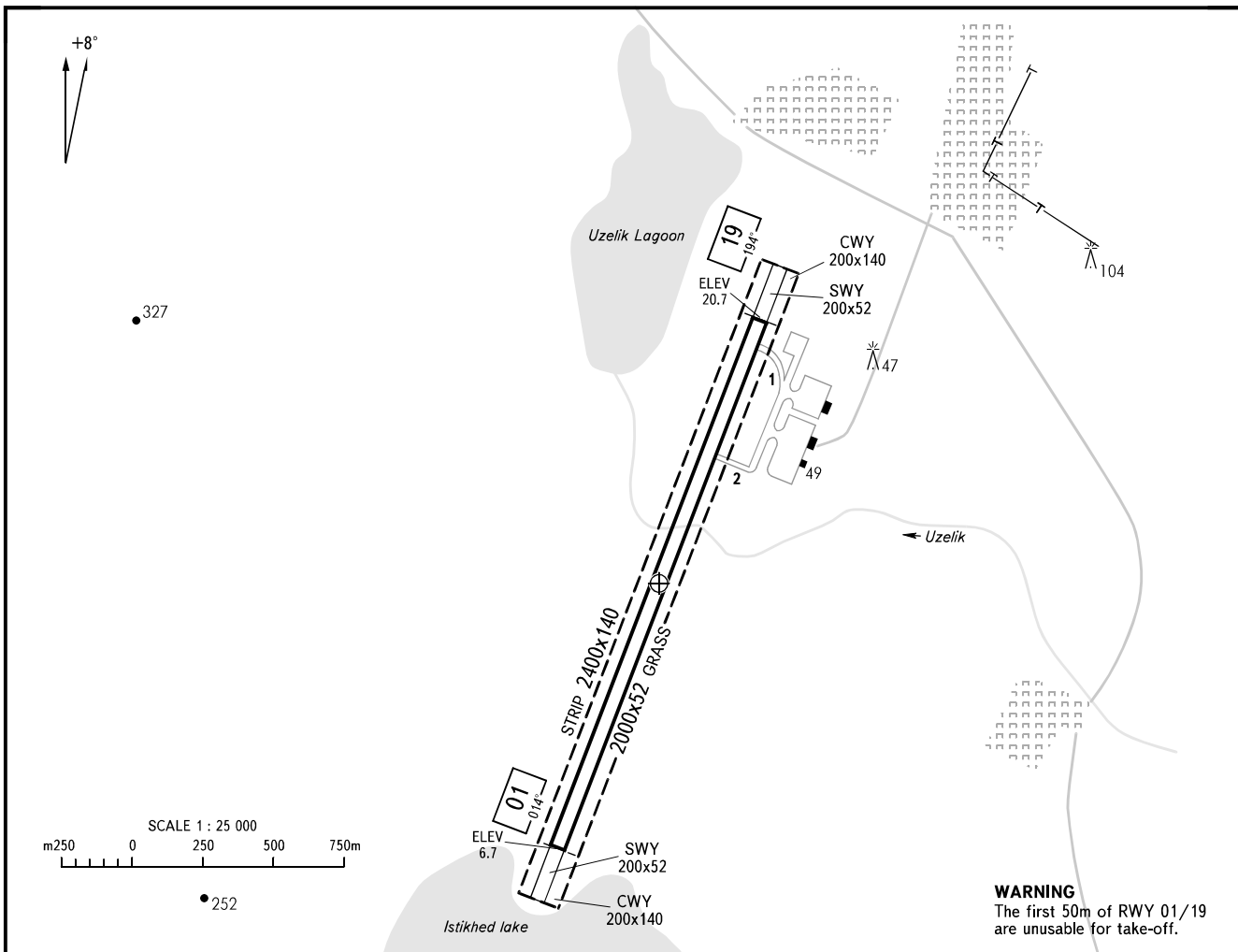
ARP
N64°22'41"
W173°14'36"

ELEV
21.6m

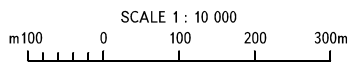
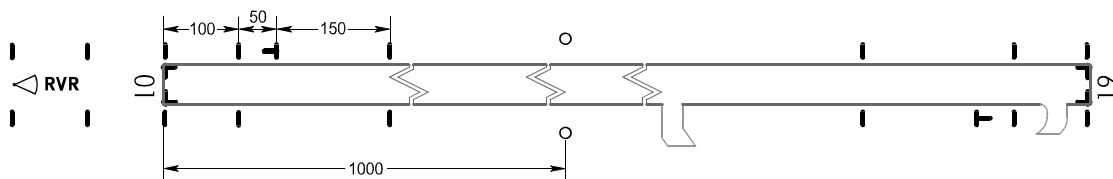
PROVIDENIYA BAY TOWER 119.3

PROVIDENIYA BAY, RUSSIA

PROVIDENIYA BAY

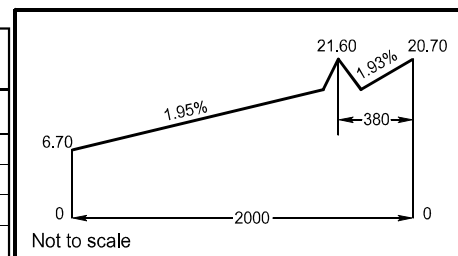


MARKING AIDS RWY 01 / 19 AND EXIT TWY



ELEVATIONS AND
DIMENSIONS IN METRES
BEARINGS ARE MAGNETIC

RWY	DIRECTION (TRUE)	THR	BEARING STRENGTH	DECLARED DISTANCES		
				RWY 01		RWY 19
01	021°30'	N64°22'12" W173°15'12"	AUW 60 tons	2000	TORA	2000
				2200	TODA	2200
				2200	ASDA	2200
19	201°30'	N64°23'12" W173°14'24"	AUW 60 tons	2000	LDA	2000



CHANGE: New chart