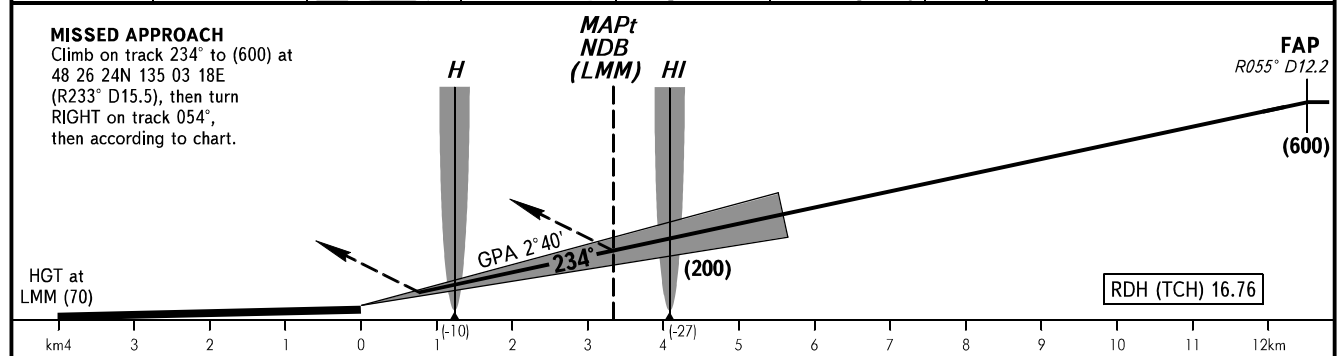
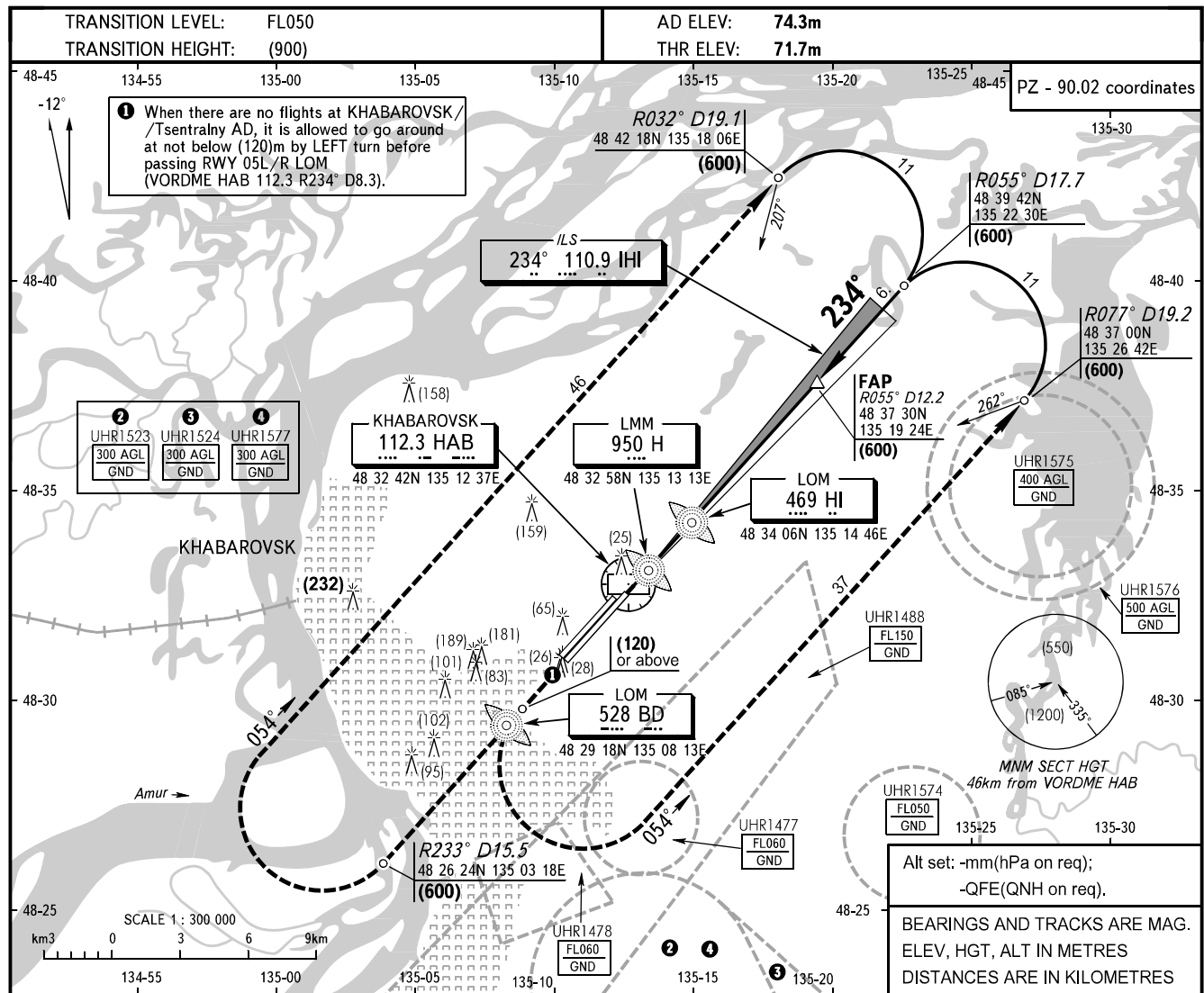


**INSTRUMENT
APPROACH
CHART - ICAO**

APPROACH	125.2 129.3R
RADAR	120.3
TOWER	119.3
	121.8 By ATC

**KHABAROVSK, RUSSIA
NOVY
ILS, PAR, 2 NDB, NDB RWY 23L**



OCA/H		A	B	C	D
Straight-in	CAT II	88(16)	91(19)	95(23)	98(26)
	CAT I	116(44)	118(46)	121(49)	125(53)
Approach	PAR	128(56)	131(59)	134(62)	137(65)
	2 NDB	170(98)	170(98)	170(98)	170(98)
	NDB(LOM)	175(103)	175(103)	175(103)	175(103)
	NDB(LMM)	250(178)	250(178)	250(178)	250(178)

WARNING:

- By coordination with ATC it is allowed to turn RIGHT before passing RWY 05L/R LOM (VORDME HAB 112.3 R234° D8.3) at not below (600).
- During PAR approach the distance from touchdown (300m from RWY beginning) to ACFT shall be determined by PAR.

GROUND SPEED	km/h	150	180	210	240	270	300	330	360	390	420	450
LOM-THR 4080m	min:sec	1.38	1.22	1.10	1.01	0.54	0.49	0.44	0.41	0.38	0.35	0.33
RATE OF DESCENT (Grad 4.7%)	m/s	2.0	2.4	2.7	3.1	3.5	3.9	4.3	4.7	5.1	5.5	5.9

CHANGE: UHR