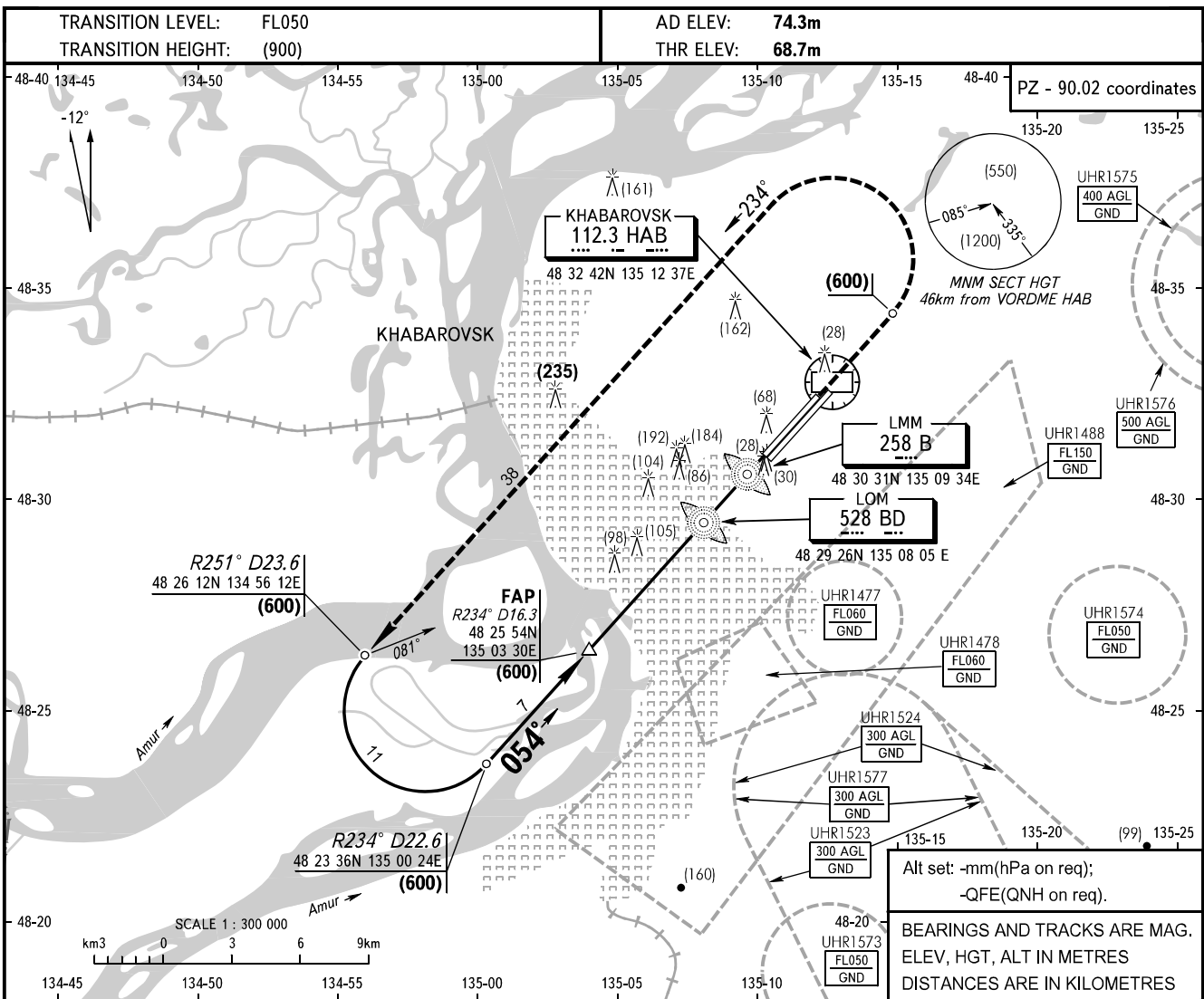


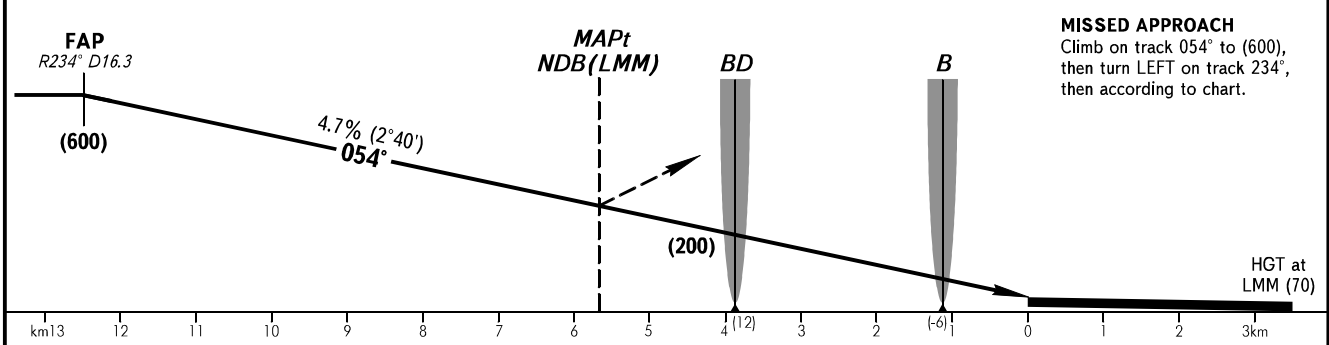
**INSTRUMENT  
APPROACH  
CHART - ICAO**

APPROACH	<b>125.2 129.3R</b>
RADAR	<b>120.3</b>
TOWER	<b>119.3</b>
	<b>121.8 By ATC</b>

**KHABAROVSK, RUSSIA**  
NOVY  
PAR, 2 NDB, NDB RWY 05L



All set: -mm(hPa on req);  
-QFE(QNH on req).  
BEARINGS AND TRACKS ARE MAG.  
ELEV, HGT, ALT IN METRES  
DISTANCES ARE IN KILOMETRES



**MISSED APPROACH**  
Climb on track 054° to (600),  
then turn LEFT on track 234°,  
then according to chart.

OCA/H		A	B	C	D
Straight-in	PAR	130(61)	133(64)	136(67)	139(70)
	2 NDB	211(142)	211(142)	211(142)	211(142)
Approach	NDB(LOM)	327(258)	327(258)	327(258)	327(258)
	NDB(LMM)	350(281)	350(281)	350(281)	350(281)

**WARNING**  
During PAR approach the distance from  
touchdown (300m from RWY beginning)  
to ACFT shall be determined by PAR.

GROUND SPEED	km/h	150	180	210	240	270	300	330	360	390	420	450
LOM-THR 3880m	min:sec	1.33	1.18	1.07	0.58	0.52	0.47	0.42	0.39	0.36	0.33	0.31
RATE OF DESCENT	m/s	2.0	2.4	2.7	3.1	3.5	3.9	4.3	4.7	5.1	5.5	5.9

CHANGE: UHR