

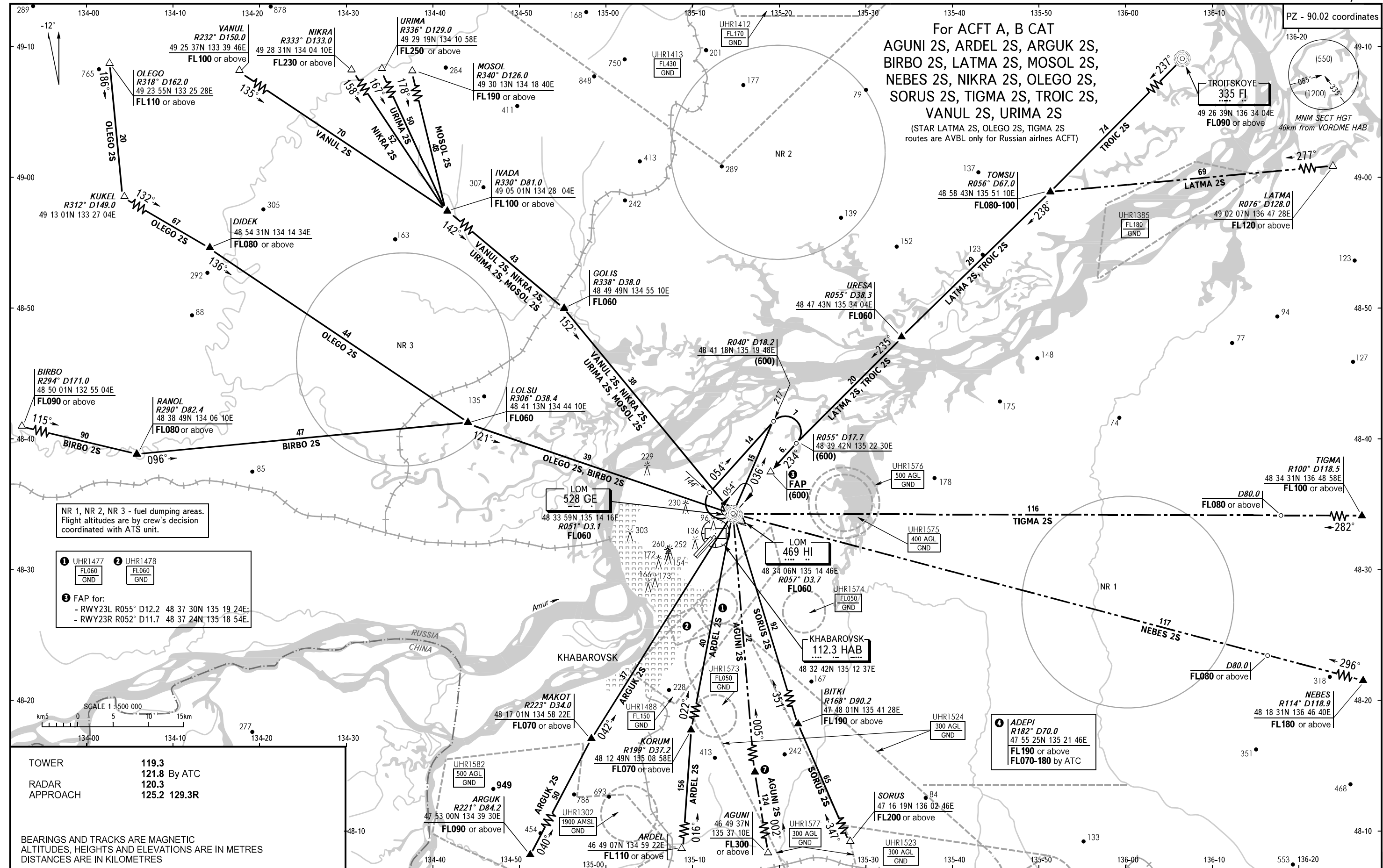
KHABAROVSK, RUSSIA NOVY RWY 23L/23R

STANDARD ARRIVAL CHART INSTRUMENT (STAR) - ICAO

TRANSITION
LEVEL: **FL050**

PZ - 90.02 coordinates

For ACFT A, B CAT
AGUNI 2S, ARDEL 2S, ARGUK 2S,
BIRBO 2S, LATMA 2S, MOSOL 2S,
NEBES 2S, NIKRA 2S, OLEGO 2S,
SORUS 2S, TIGMA 2S, TROIC 2S,
VANUL 2S, URIMA 2S
(STAR LATMA 2S, OLEGO 2S, TIGMA 2S
routes are AVBL only for Russian airlines ACFT)



NR 1, NR 2, NR 3 - fuel dumping areas.
Flight altitudes are by crew's decision
coordinated with ATIS unit.

1 UHR1477
FL060
GND

2 UHR1478
FL060
GND

3 FAP for:
- RWY23L R055° D12.2 48 37 30N 135 19 24E;
- RWY23R R052° D11.7 48 37 24N 135 18 54E.

TOWER **119.3**
RADAR **121.8** By ATC
APPROACH **120.3**
125.2 129.3R

BEARINGS AND TRACKS ARE MAGNETIC
ALTITUDES, HEIGHTS AND ELEVATIONS ARE IN METRES
DISTANCES ARE IN KILOMETRES

CHANGE: UHR