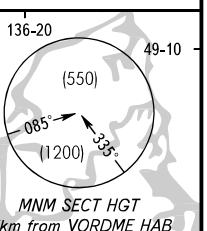


STANDARD ARRIVAL CHART
INSTRUMENT (STAR) - ICAO

KHABAROVSK, RUSSIA
NOVY
RWY 05L/05R

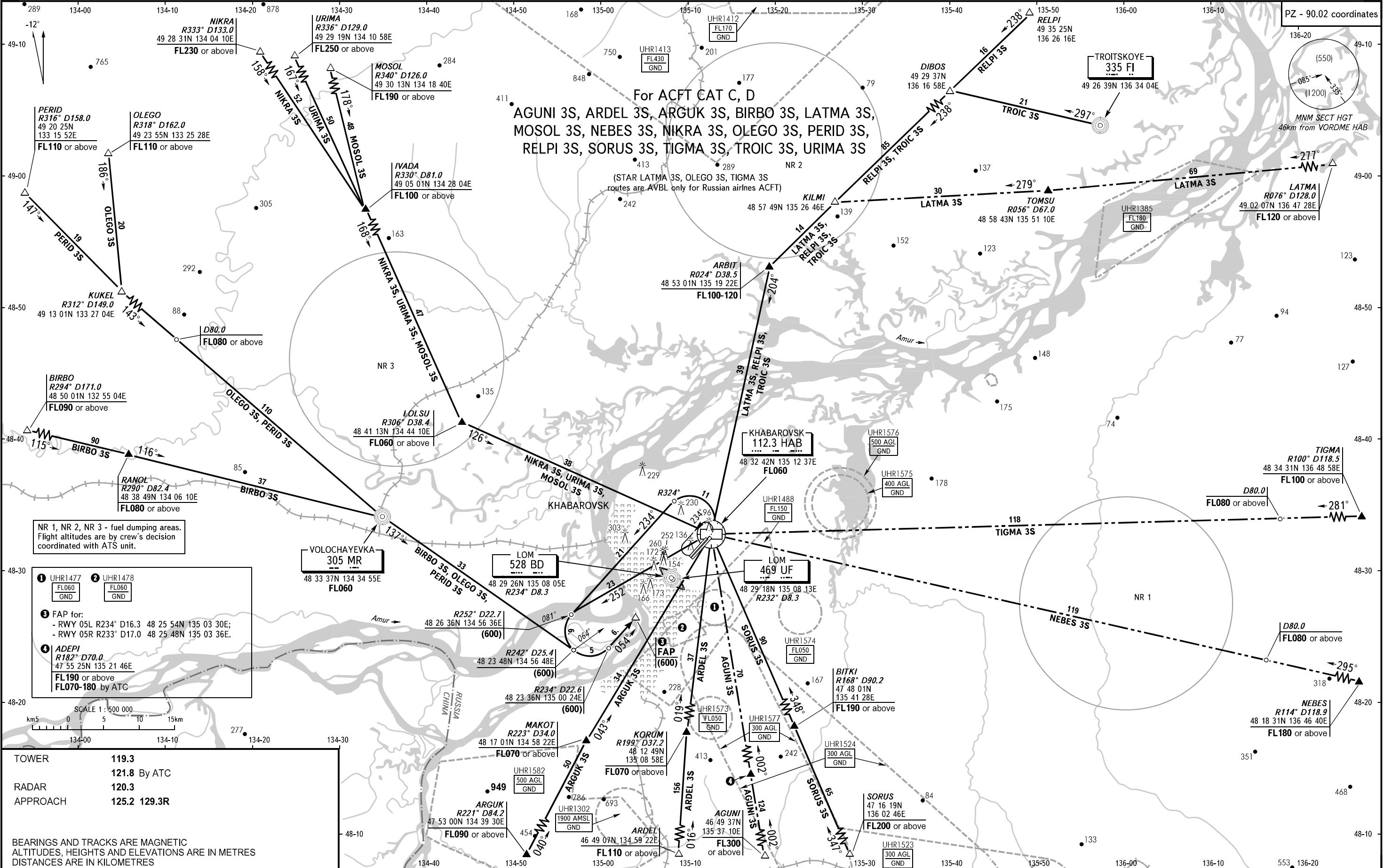
TRANSITION
LEVEL: FL050

PZ - 90.02 coordinates



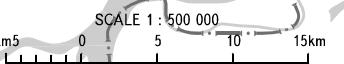
For ACFT CAT C, D
AGUNI 3S, ARDEL 3S, ARGUK 3S, BIRBO 3S, LATMA 3S,
MOSOL 3S, NEBES 3S, NIKRA 3S, OLEGO 3S, PERID 3S,
RELPI 3S, SORUS 3S, TIGMA 3S, TROIC 3S, URIMA 3S

(STAR LATMA 3S, OLEGO 3S, TIGMA 3S
routes are AVBL only for Russian airlines ACFT)



NR 1, NR 2, NR 3 - fuel dumping areas.
Flight altitudes are by crew's decision
coordinated with ATS unit.

- 1 UHR1477
FL060
GND
- 2 UHR1478
FL060
GND
- 3 FAP for:
- RWY 05L R234° D16.3 48 25 54N 135 03 30E;
- RWY 05R R233° D17.0 48 25 48N 135 03 36E.
- 4 ADEPI
R182° D70.0
47 55 25N 135 21 46E
FL190 or above
FL070-180 by ATC



TOWER	119.3
RADAR	121.8 By ATC
APPROACH	120.3
	125.2 129.3R

BEARINGS AND TRACKS ARE MAGNETIC
ALTITUDES, HEIGHTS AND ELEVATIONS ARE IN METRES
DISTANCES ARE IN KILOMETRES