

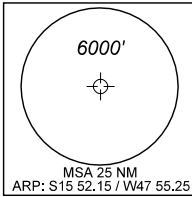
CARTA DE CHEGADA PADRÃO **BRASÍLIA / PRES. JUSCELINO KUBITSCHEK, INTL (SBBR)**
 POR INSTRUMENTOS (STAR)

RWY 11L/11R

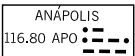
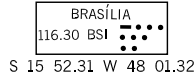
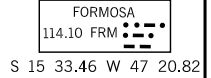
STANDARD ARRIVAL CHART
 INSTRUMENT (STAR)

RNAV ILPAV 1 - PABIN 1 - SIRUL 1 - VUKEP 1

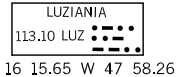
TA 7000'	ATIS 127.80	ACC BRASÍLIA 123.75 123.95 124.20 126.05 121.50	APP BRASÍLIA 119.20 119.50 119.70 120.00 129.60	TWR BRASÍLIA 118.10 118.45 121.50
-----------------	-----------------------	-----------------------------------------------------------	-----------------------------------------------------------	---------------------------------------------



ALT. ELEV E HGT EM PÉS
 ALT. ELEV AND HGT IN FEET
 DEC/VAR: 21° W (2013)
 VA/CHG: 07 W



**SEM ESCALA
 NO SCALE**



**RESTRIÇÕES DE VELOCIDADE
 SPEED RESTRICTIONS**

(A) IAS MAX 230 KT
 (B) IAS MAX 190 KT

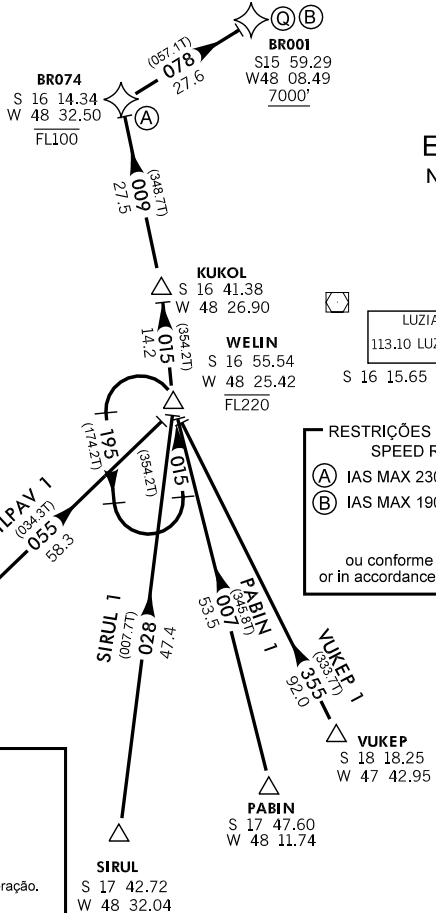
ou conforme instruções do ATC
 or in accordance with ATC instructions.

QNH

(Q) PONTO DE AJUSTE DE ALTÍMETRO
 ALTIMETER SETTING POINT
 ou conforme instruções do ATC
 or in accordance with ATC instructions.

RMK

Nota 1: RNAV 1
 Nota 2: B-RNP 1
 Nota 3: RADAR compulsório.
 RADAR required
 Nota 4: DME/DME/IRU ou GNSS compulsório.
 DME/DME/IRU or GNSS required.
 Nota 5: Para aeronaves não equipadas com GNSS.
 ULD, ARX, APO, BSI e LUZ obrigatoriamente em operação.
 For non-GNSS equipped aircraft, GNSS,
 ULD, ARX, APO, BSI and LUZ must be operational.
 Nota 6: Observar compulsoriamente a seção CAR da AIP-MAP.
 CAR section of AIP-MAP shall be observed.
 Nota 7: Descrição textual no verso
 Textual description on reverse side



F:\AIP-MA-P\MAP-ICAO-BRASILIA\SBBR\bb_r_star_mv_ilpav_1.rwy\11L11R.dgm

DEPARTAMENTO DE CONTROLE DO ESPAÇO AÉREO - COMAER - BRASIL