

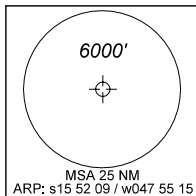
CARTA DE CHEGADA PADRÃO **BRASÍLIA / PRES. JUSCELINO KUBITSCHKE, INTL (SBBR)**  
 POR INSTRUMENTOS (STAR)

**RWY 11L/11R**

STANDARD ARRIVAL CHART  
 INSTRUMENT (STAR)

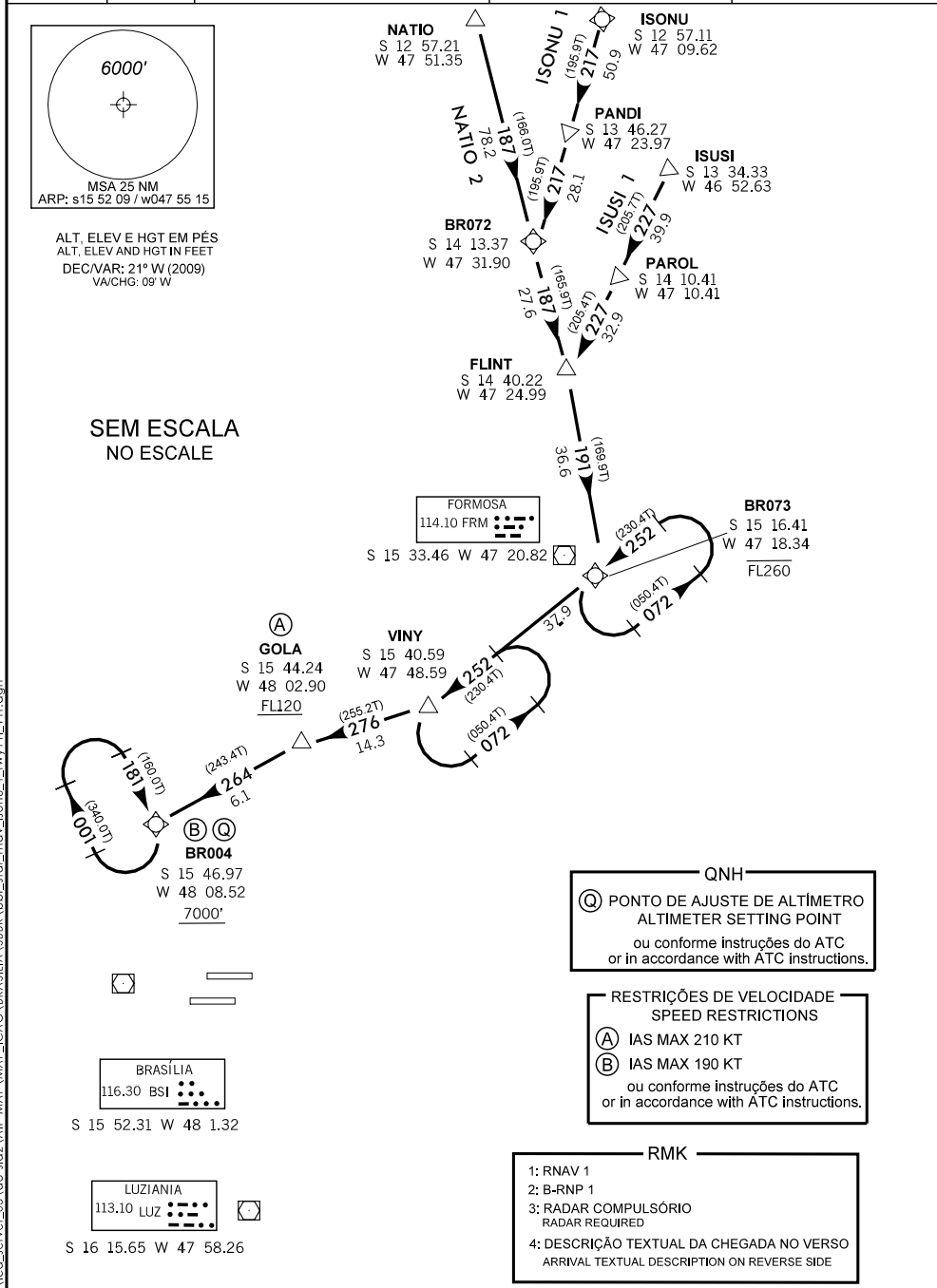
**RNAV ISONU 1 - ISUSI 1 - NATIO 2**

<b>TA 7000'</b>	<b>ATIS</b> 127.80	<b>ACC BRASÍLIA</b> 124.50 124.70 133.05 135.00 121.50	<b>APP BRASÍLIA</b> 119.20 119.50 119.70 120.00 129.60	<b>TWR BRASÍLIA</b> 118.10 118.45 121.50
-----------------	-----------------------	---	---	---



ALT, ELEV E HGT EM PÉS  
 ALT, ELEV AND HGT IN FEET  
 DEC/VAR: 21° W (2009)  
 VA/CHG: 09° W

SEM ESCALA  
 NO ESCALE



\\lccs\_server\_05\do-sis2\AIP\MAP\MAP\_ICAO\BRASILIA\SBBR\bbf\_star\_mvov\_isonu\_1\_rwy11l\_1r.dgn

DEPARTAMENTO DE CONTROLE DO ESPAÇO AÉREO - COMAER - BRASIL

DESCRIÇÃO TEXTUAL DA CHEGADA

**I - CHEGADA ISONU 1**

APÓS A INTERSEÇÃO FLY-BY ISONU, VOAR (TF) 50.9 NM NO RUMO 217 PARA INTERSEÇÃO FLY-BY PANDI, MANTER (TF) RUMO 217, VOAR 28.1 NM PARA O WAYPOINT FLY-BY BR072, CURVAR À ESQUERDA (TF) RUMO 187, VOAR 27.6 NM PARA INTERSEÇÃO FLY-BY FLINT, CURVAR À DIREITA (TF) RUMO 191, VOAR 36.6 NM PARA O WAYPOINT FLY-BY BR073, CURVAR À DIREITA (TF) RUMO 252, VOAR 37.9 NM PARA A INTERSEÇÃO FLY-BY VINY, CURVAR À DIREITA (TF) RUMO 276, VOAR 14.3 NM PARA A INTERSEÇÃO FLY-BY GOLA CURVAR À ESQUERDA (TF) RUMO 264, VOAR 6.1 NM PARA O WAYPOINT FLY-BY BR004.

**II - CHEGADA ISUSI 1**

APÓS A INTERSEÇÃO FLY-BY ISUSI, VOAR (TF) 39.9 NM NO RUMO 227 PARA INTERSEÇÃO FLY-BY PAROL, MANTER (TF) RUMO 227, VOAR 32.9 NM PARA A INTERSEÇÃO FLY-BY FLINT, CURVAR À ESQUERDA (TF) RUMO 191, VOAR 36.6 NM PARA WAYPOINT FLY-BY BR073, CURVAR À DIREITA (TF) RUMO 252, VOAR 37.9 NM PARA A INTERSEÇÃO FLY-BY VINY, CURVAR À DIREITA (TF) RUMO 276, VOAR 14.3 NM PARA A INTERSEÇÃO FLY-BY GOLA CURVAR A ESQUERDA (TF) RUMO 264, VOAR 6.1 NM PARA WAYPOINT FLY-BY BR004.

**III - CHEGADA NATIO 2**

APÓS A INTERSEÇÃO FLY-BY NATIO, VOAR (TF) 78.2 NM NO RUMO 187 PARA O WAYPOINT FLY-BY BR072, MANTER (TF) RUMO 187, VOAR 27.6 NM PARA A INTERSEÇÃO FLY-BY FLINT, CURVAR À DIREITA (TF) RUMO 191, VOAR 36.6 NM PARA WAYPOINT FLY-BY BR073, CURVAR À DIREITA (TF) RUMO 252, VOAR 37.9 NM PARA A INTERSEÇÃO FLY-BY VINY, CURVAR À DIREITA (TF) RUMO 276, VOAR 14.3 NM PARA A INTERSEÇÃO FLY-BY GOLA, CURVAR À ESQUERDA (TF) RUMO 264, VOAR 6.1 NM PARA O WAYPOINT FLY-BY BR004

ARRIVAL TEXTUAL DESCRIPTION

**I - ISONU 1 ARRIVAL**

AFTER INTERSECTION FLY-BY ISONU, FLY (TF) 50.9 NM ON COURSE 217 TO INTERSECTION FLY-BY PANDI, MAINTAIN (TF) COURSE 217, FLY 28.1 NM TO WAYPOINT FLY-BY, BR072, TURN LEFT (TF) COURSE 187, FLY 27.6 NM TO INTERSECTION FLY-BY FLINT, TURN RIGHT (TF) COURSE 191, FLY 36.6 NM TO WAYPOINT FLY-BY, BR073, TURN RIGHT (TF) COURSE 252, FLY 37.9 NM TO INTERSECTION FLY-BY VINY, TURN RIGHT (TF) COURSE 276, FLY 14.3 NM TO INTERSECTION FLY-BY GOLA, TURN LEFT (TF) COURSE 264, FLY 6.1 NM TO WAYPOINT FLY-BY BR004.

**II - ISUSI 1 ARRIVAL**

AFTER INTERSECTION FLY-BY ISUSI, FLY (TF) 39.9 NM, ON COURSE 227 TO INTERSECTION FLY-BY PAROL, MAINTAIN (TF) COURSE 227, FLY 32.9 NM TO INTERSECTION FLY-BY FLINT, TURN LEFT (TF) COURSE 191, FLY 36.6 NM TO WAYPOINT FLY-BY BR073, TURN RIGHT (TF) COURSE 252 FLY 37.9 NM TO INTERSECTION FLY-BY VINY, TURN RIGHT (TF) COURSE 276, FLY 14.3 NM TO INTERSECTION FLY-BY GOLA, TURN LEFT (TF) COURSE 264, FLY 6.1 NM TO WAYPOINT FLY-BY BR004.

**III - NATIO 2 ARRIVAL**

AFTER INTERSECTION FLY BY NATIO, FLY (TF) 78.2 NM ON COURSE 187 TO WAYPOINT FLY- BY BR072, MAINTAIN (TF) COURSE 187, FLY 27.6 NM TO INTERSECTION FLY-BY FLINT, TURN RIGHT (TF) COURSE 191, FLY 36.6 NM TO WAYPOINT FLY-BY BR073, TURN RIGHT (TF) COURSE 252, FLY 37.9 NM TO INTERSECTION FLY-BY VINY, TURN RIGHT (TF) COURSE 276, FLY 14.3 NM TO INTERSECTION FLY-BY GOLA, TURN LEFT (TF) COURSE 264, FLY 6.1 NM TO WAYPOINT FLY-BY BR004.