

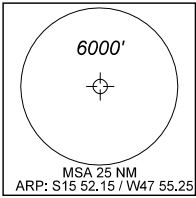
CARTA DE CHEGADA PADRÃO **BRASÍLIA / PRES. JUSCELINO KUBITSCHKE, INTL (SBBR)**  
 POR INSTRUMENTOS (STAR)

STANDARD ARRIVAL CHART  
 INSTRUMENT (STAR)

RNAV ILPAV 1B - PABIN 1B - SIRUL 1B - VUKEP 1B

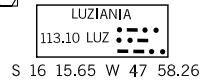
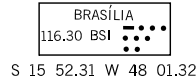
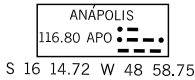
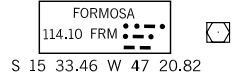
**RWY 29L/29R**

<b>TA 7000'</b>	<b>ATIS</b> 127.80	<b>ACC BRASÍLIA</b> 123.75 123.95 124.20 126.05 121.50	<b>APP BRASÍLIA</b> 119.20 119.50 119.70 120.00 129.60	<b>TWR BRASÍLIA</b> 118.10 118.45 121.50
-----------------	-----------------------	---	---	---



**SEM ESCALA NO SCALE**

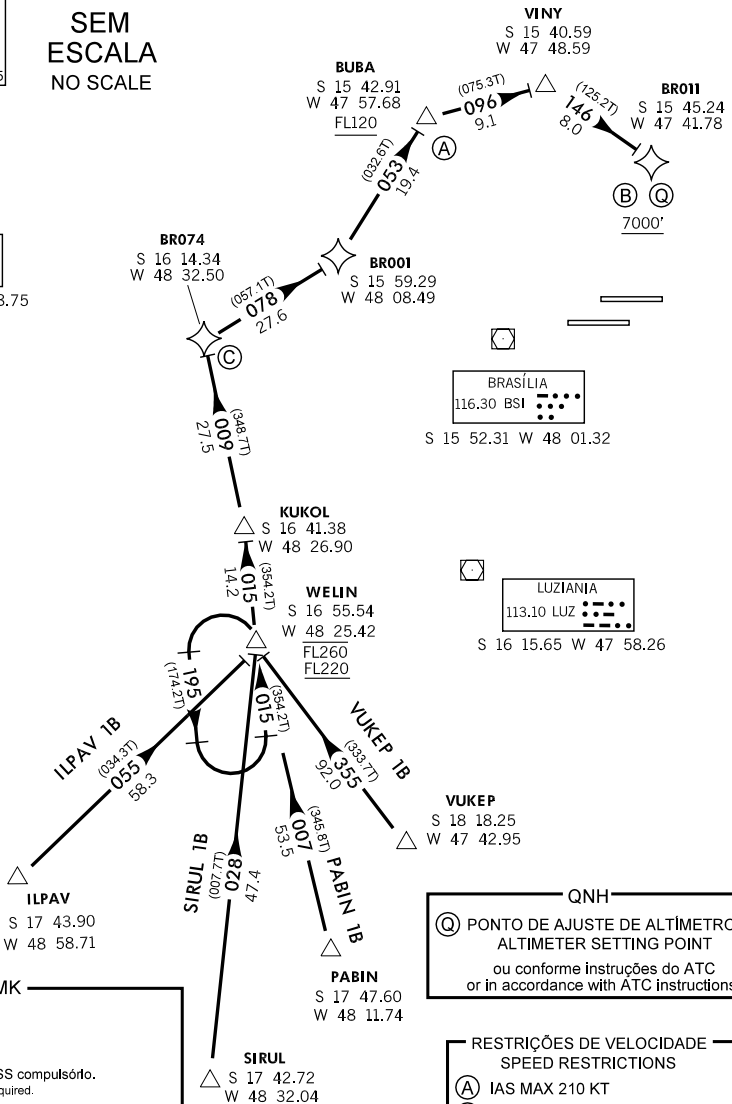
ALT. ELEV E HGT EM PÉS  
 ALT. ELEV AND HGT IN FEET  
 DEC/VAR: 21° W (2013)  
 VA/CHG: 07 W



- RMK**
- Nota 1: RNAV 1
  - Nota 2: B-RNP 1
  - Nota 3: RADAR compulsório.  
RADAR required
  - Nota 4: DME/DME/IRU ou GNSS compulsório.  
DME/DME/IRU or GNSS required.
  - Nota 5: Para aeronaves não equipadas com GNSS, ULD, ARX, APO, BSI e LUZ obrigatoriamente em operação.  
For non-GNSS equipped aircraft, GNSS, ULD, ARX, APO, BSI and LUZ must be operational.
  - Nota 6: Descrição textual no verso  
Textual description on reverse side

- QNH**
- (C) PONTO DE AJUSTE DE ALTÍMETRO  
ALTIMETER SETTING POINT  
ou conforme instruções do ATC  
or in accordance with ATC instructions.

- RESTRIÇÕES DE VELOCIDADE - SPEED RESTRICTIONS**
- (A) IAS MAX 210 KT
  - (B) IAS MAX 190 KT
  - (C) IAS MAX 230 KT
- ou conforme instruções do ATC  
or in accordance with ATC instructions.



Z:\AIP-MA\PAV\WAP\_ICA\O.BRASILIA\SBBR\bb\_star\_mv\_ilpav\_1b\_rwy29l\_29r.dgn

DEPARTAMENTO DE CONTROLE DO ESPAÇO AEREO - COMAER - BRASIL

DESCRIÇÃO TEXTUAL DA CHEGADA

**I - CHEGADA ILPAV 1B:**

APOÉS O INTERSEÇÃO FLY-BY ILPAV, VOAR (TF) 58.3 NM NO RUMO 055 PARA A INTERSEÇÃO FLY-BY WELIN, ENTÃO...

**II - CHEGADA PABIN 1B:**

APOÉS A INTERSEÇÃO FLY-BY PABIN, VOAR (TF) 53.5 NM NO RUMO 007 PARA A INTERSEÇÃO FLY-BY WELIN, ENTÃO...

**III - CHEGADA SIRUL 1B:**

APOÉS A INTERSEÇÃO FLY-BY SIRUL, VOAR (TF) 47.4 NM NO RUMO 028 PARA A INTERSEÇÃO FLY-BY WELIN, ENTÃO...

**IV - CHEGADA VUKEP 1B:**

APOÉS A INTERSEÇÃO FLY-BY VUKEP, VOAR (TF) 92.0 NM NO RUMO 355 PARA A INTERSEÇÃO FLY-BY WELIN, ENTÃO...

... MANTER (TF) RUMO 015, VOAR 14.2 NM PARA A INTERSEÇÃO FLY-BY KUKOL. CURVAR À ESQUERDA (TF) RUMO 009, VOAR 27.5 NM PARA O WAYPOINT FLY-BY BR074. CURVAR À DIREITA RUMO 078, VOAR 27.6 NM PARA O WAYPOINT FLY-BY BR001. CURVAR À ESQUERDA (TF) RUMO 053, VOAR 19.4 NM PARA A INTERSEÇÃO FLY-BY BUBA, CURVAR A DIREITA (TF) RUMO 096, VOAR 9.1 NM PARA A INTERSEÇÃO FLY-BY VINY, CURVAR À DIREITA (TF) RUMO 146, VOAR 8.0 NM PARA O WAYPOINT FLY-BY BR011.

ARRIVAL TEXTUAL DESCRIPTION

**I - ILPAV 1B ARRIVAL:**

AFTER ILPAV FLY-BY INTERSECTION, FLY (TF) 58.3 NM ON COURSE 055 TO WELIN FLY-BY INTERSECTION. THEN...

**II - PABIN1B ARRIVAL :**

AFTER PABIN FLY-BY INTERSECTION, FLY (TF) 53.5 NM ON COURSE 007 TO WELIN FLY-BY INTERSECTION. THEN...

**III - SIRUL 1B ARRIVAL:**

AFTER SIRUL FLY-BY INTERSECTION, FLY (TF) 47.4 NM ON COURSE 028 TO WELIN FLY-BY INTERSECTION. THEN...

**IV - VUKEP 1B ARRIVAL:**

AFTER VUKEP FLY-BY INTERSECTION, FLY (TF) 92.0 NM ON COURSE 355 TO WELIN FLY-BY INTERSECTION. THEN...

... MAINTAIN COURSE 015, FLY 14.2 NM TO KUKOL FLY-BY INTERSECTION, TURN LEFT (TF) COURSE 009, FLY 27.5 NM TO BR074 FLY-BY WAYPOINT, TURN RIGHT (TF) COURSE 078, FLY 27.6 NM TO BR001 FLY-BY WAYPOINT. TURN LEFT (TF) COURSE 053, FLY 19.4 NM TO BUBA FLY-BY INTERSECTION, TURN RIGHT (TF) COURSE 096, FLY 9.1 NM TO VINY FLY-BY INTERSECTION, TURN RIGHT (TF) COURSE 146, FLY 8.0 NM TO BR011 FLY-BY WAYPOINT.