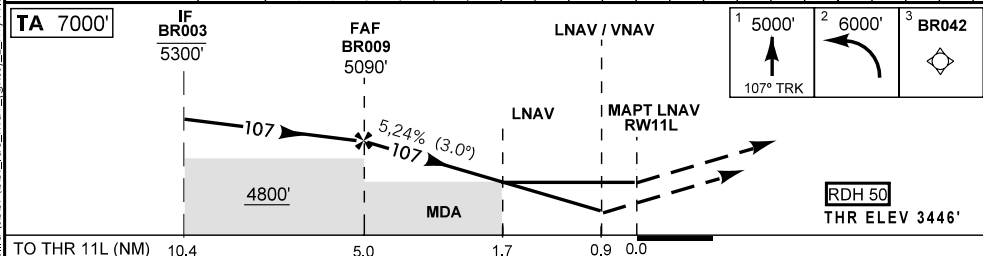
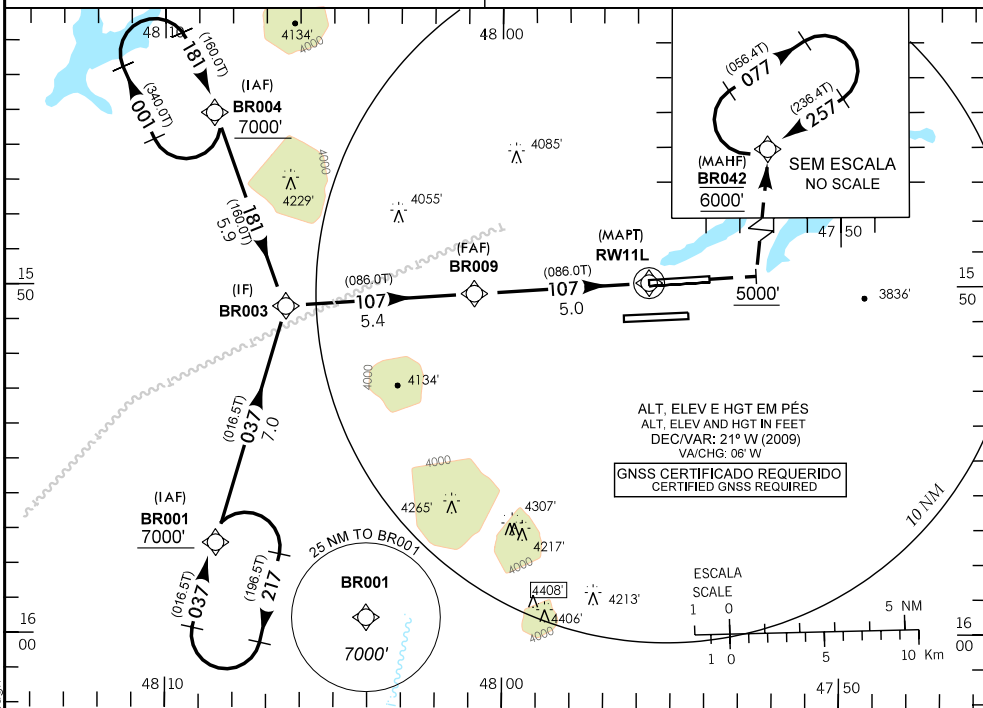


AD ELEV: 3497'	ATIS 127.80	APP BRASÍLIA 119.20 119.50 119.70 120.00 129.60	TWR BRASÍLIA 118.10 118.45 121.50	GNDC BRASÍLIA 121.80
-----------------------	-----------------------	---	---	--------------------------------

1) PROCEDIMENTO BARO-VNAV NÃO AUTORIZADO ABAIXO DE 0° C. APROXIMAÇÃO PERDIDA : SUBIR PARA 5000' (VA) NO RUMO 107°, ENTÃO CURVAR À ESQUERDA (DF) E SUBIR PARA 6000' PARA ESPERA EM BR042.
 1) BARO-VNAV PROCEDURE NOT AUTHORIZED BELOW 0° C.
 2) OBSERVAR COMPULSORIAMENTE SEÇÃO CAR DA AIP-MAP. MISSED APPROACH: CLIMB TO 5000' (VA) ON TRACK 107°, THEN TURN LEFT (DF) AND CLIMB TO 6000' FOR HOLDING AT BR042.
 2) CAR SECTION OF AIP-MAP SHALL BE OBSERVED.



BR009	4.0	3.0	2.0	1.0	0.9	RWY 11L	KT	090	110	130	150	170	190
5090	4769	4451	4133	3814	3796	ALT	FPM	500	600	700	800	900	1000
1642	1323	1005	687	368	350	(HGT)	FAF-MAPT 5NM	NIL					

POUSO DIRETO STRAIGHT-IN	CAT	A	B	C	D	E
LNAV / VNAV	DA / OCH / TETO	3796 / 350 / 400				
	ALS / NO ALS / RVR ALS (m)	800 / 1600 / NIL				
LNAV	MDA / OCH / TETO	4040 / 594 / 600				
	ALS / NO ALS / RVR ALS (m)	800 / 1600 / NIL		2000 / 2700 / NIL		
CIRCULAR TO CIRCLE	MDA / OCH / TETO	NA				
	VIS (m)					

\\ica_server_05\cfta-prod\ca\aip-map\mae_icao\brasil\stb\brasil\loc_rnav_(gnss)_z_rwy_11.dgn

DEPARTAMENTO DE CONTROLE DO ESPAÇO AÉREO - COMAR - BRASIL