

BRASÍLIA / PRES. JUSCELINO KUBITSCHEK, INTL  
DF-BRASIL

RNAV (GNSS) RWY 11L

IAC - SBBR

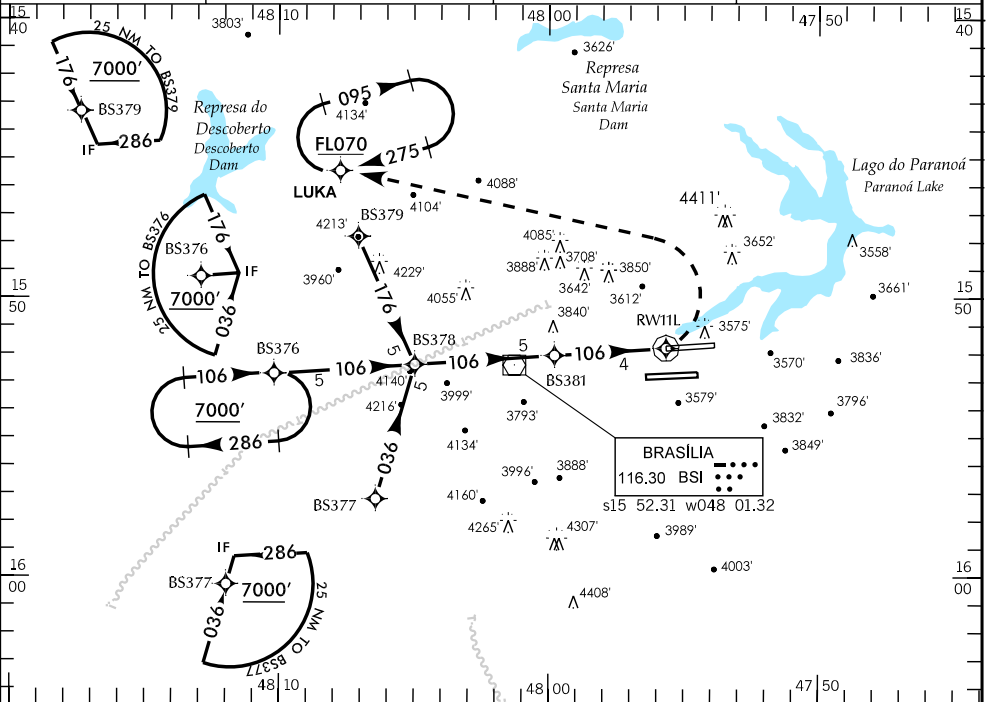
WGS84

ATIS  
127.80

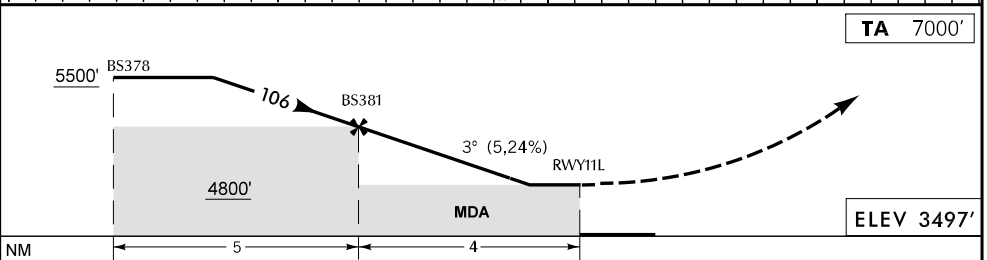
APP BRASÍLIA  
119.20 119.50 119.70 120.00  
129.60

TWR BRASÍLIA  
118.10 118.45 121.50

GNDC BRASÍLIA  
121.80



TA 7000'



ELEV 3497'

**APROXIMAÇÃO PERDIDA**  
MISSED APPROACH

SUBIR PARA FLO70 EM CURVA À ESQUERDA PARA ESPERA EM LUKA.  
CLIMB TO FLO70 TURNING LEFT TO HOLD IN LUKA.

**RMK** 1) OBSERVAR COMPULSORIAMENTE A SEÇÃO CAR DA AIP-MAP. 2) LDG RWY 29R CIRCULE SECT N AD.  
1) COMPULSORILY OBSERVE AIP-MAP CAR SECTION. 2) LDG RWY 29R CIRCLE SECT N AD.

C	POUSO DIRETO RWY 11L		STRAIGHT-IN TO RWY 11L		IFR OPS	DIURNA / NOTURNA DAY / NIGHT	PARA CIRCULAR TO CIRCLING (RMK)				
	GNSS										
A											
T	MDA 3960'				TETO CEILING 500'						
	VIS ALS INOP				VIS ALS		CAT	MDA	TETO CEILING	VIS	
A					800 M		A	4140'	700'	1600 M	
B	1600 M						B	4140'	700'	1600 M	
C	2400 M						C	4820'	1400'	4800 M	
D	2800 M						D	4820'	1400'	4800 M	
E					2000 M		E	4920'	1500'		

RAZÃO DE DESCIDA NA APROXIMAÇÃO FINAL RATE OF DESCENT ON FINAL APPROACH							ALTITUDE RECOMENDADA NA APROXIMAÇÃO FINAL RECOMMENDED ALTITUDE FOR 3° (5.24%) RAMP						
KT	090	110	130	150	170	190	NM	RWY11L	1.4	2.0	3.0	BS381	2.2
FPM	500	600	750	850	950	1050	FT	NA	3960	4170	4490	4800	5500