

INSTRUMENT APPROACH CHART

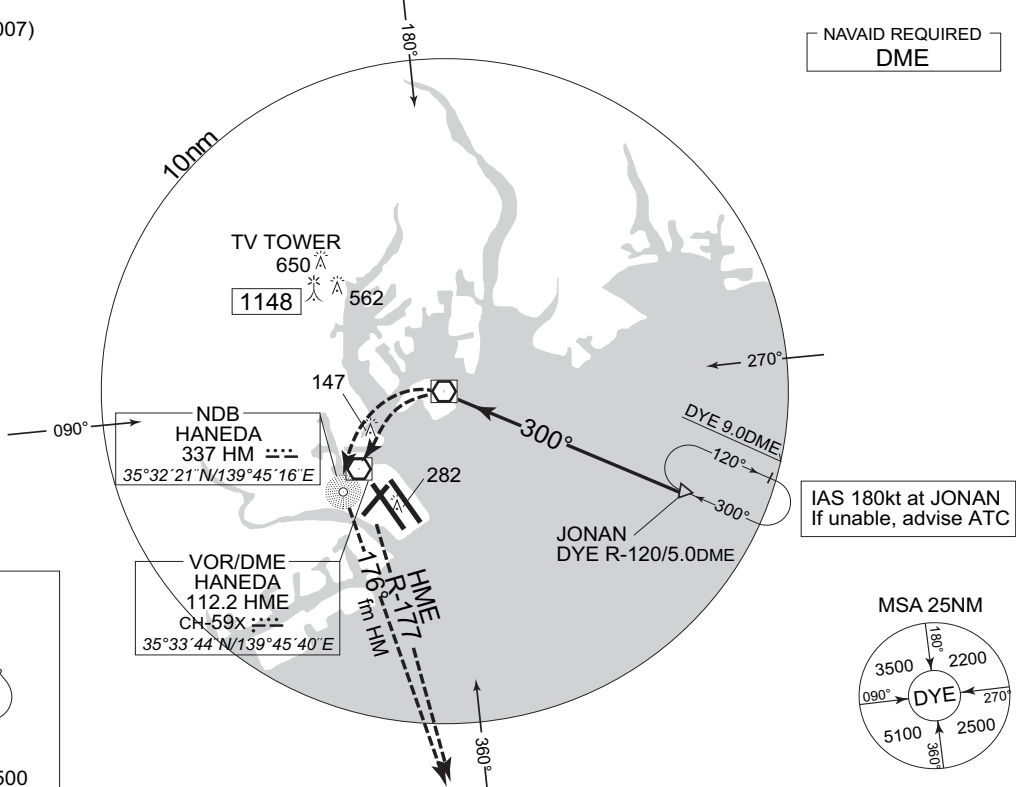
RJTT / TOKYO INTL

VOR A (For RWY 16R)

| | | | |
|---|---|--|-------------------------------|
| TOKYO APP 119.1 – 119.4 – 119.7 126.5 – 236.8 – 261.2 | DAIBA VOR/DME 111.0 DYE $\equiv\text{---}$ CH-47X 35°36'14"N/139°49'03"E | TOKYO TOWER 118.1 – 124.35 – 118.8 126.2 – 236.8 | RADAR AVAILABLE ATIS 128.8 |
|---|---|--|-------------------------------|

VAR 7°W (2007)

NAVAID REQUIRED
DME



IAS 180kt at JONAN
If unable, advise ATC

MSA 25NM

PQE
MHA 4500



MISSED APPROACH

At DYE VOR/DME, turn left, climb to HME VOR/DME (HM NDB), then climb via HME R-177 (176° from HM NDB) to URAGA, then via PQE R-357 to PQE VOR/DME and hold. Cross URAGA at 4,500ft. Contact TOKYO APP.

| MINIMA | | AD elev. 21 | | | |
|--------|------------|-------------|--------------|-----------|-----|
| CAT | MDA(H) | Facilities | | | |
| | | Full VIS | Intermediate | Basic VIS | Nil |
| A | 1000 (979) | - | | 6000 | |
| B | | | | | |
| C | | | | | |
| D | | | | | |

MINIMA APPLICATION CRITERIA in GENERAL 1.(3) are not applicable.