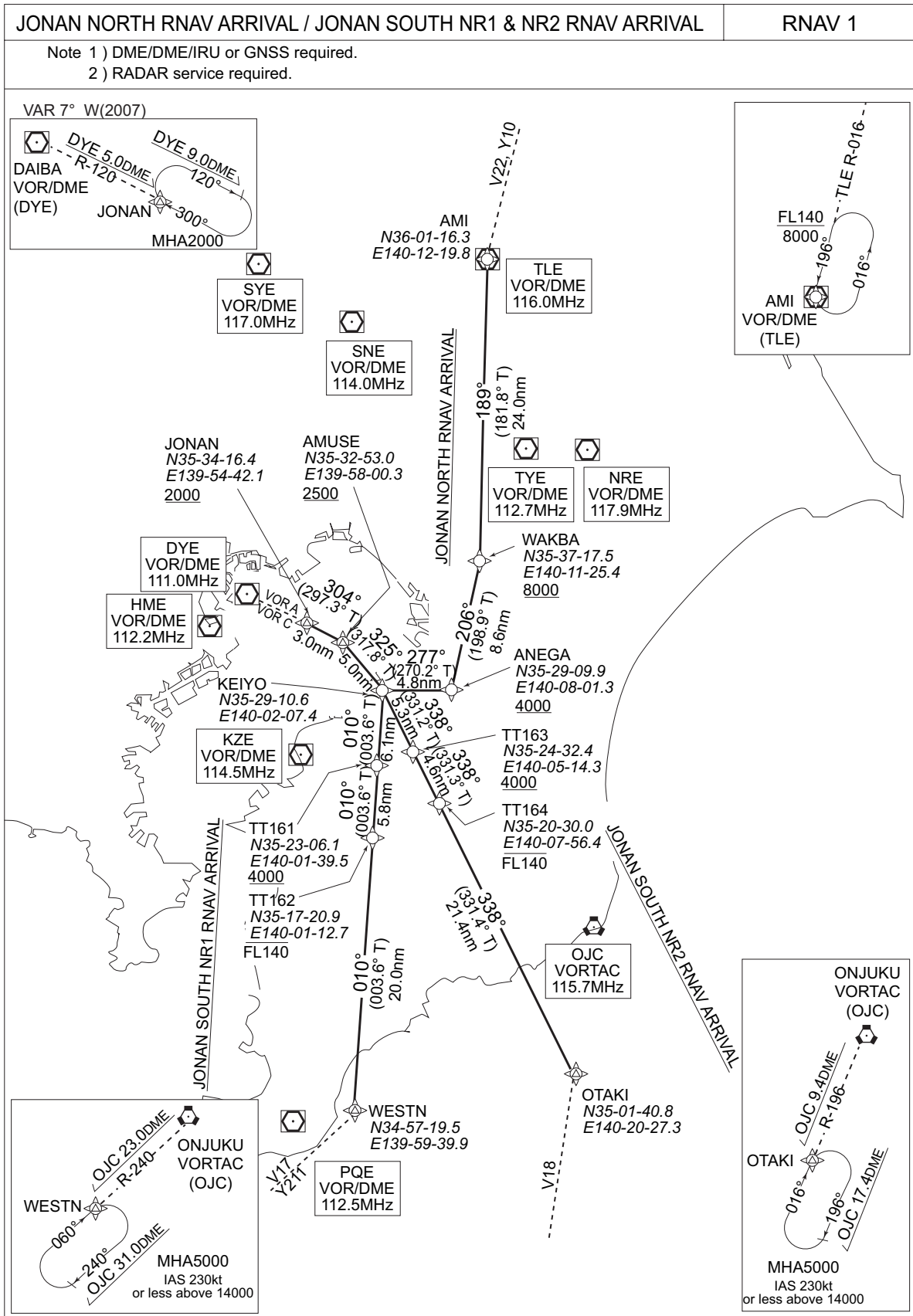


STANDARD ARRIVAL CHART-INSTRUMENT

RJTT / TOKYO INTL

RNAV STAR  
RWY16L/16R



RJTT / TOKYO INTL

RNAV STAR  
RWY16L/16R

JONAN NORTH RNAV ARRIVAL

From TLE, to WAKBA at or above 8,000ft, to ANEGA at or above 4,000ft, to KEIYO, to AMUSE at or above 2,500ft, to JONAN at or above 2,000ft.

FIX	DESIGNATION	COORDINATES	Rcmd. Path Terminator	Fix ID (Waypoint Name)	Fly Over	Distance (NM)	MAG Track (TRUE Track)	Turn Direction	Altitude (ft.)	Speed Limit (kt)	Vertical Angle	Navigation Performance
	AMI (TLE)	360116.3N 1401219.8E										
	WAKBA	353717.5N 1401125.4E										
	ANEGA	352909.9N 1400801.3E										
	KEIYO	352910.6N 1400207.4E										
	AMUSE	353253.0N 1395800.3E										
	JONAN	353416.4N 1395442.1E										
Critical DME	-											
DME GAP	-											
Inappropriate Nav aids	See General Rule 3. Inappropriate NAVAIDs for RNAV1											
			IF	TLE	-	-	-	-	-	-	-	RNAV1
			TF	WAKBA	-	24.0	189° (181.8°)	-	+8000	-	-	RNAV1
			TF	ANEGA	-	8.6	206° (198.9°)	-	+4000	-	-	RNAV1
			TF	KEIYO	-	4.8	277° (270.2°)	-	-	-	-	RNAV1
			TF	AMUSE	-	5.0	325° (317.8°)	-	+2500	-	-	RNAV1
			TF	JONAN	-	3.0	304° (297.3°)	-	+2000	-	-	RNAV1

JONAN SOUTH NR1 RNAV ARRIVAL

From WESTN, to TT162 at or below FL140, to TT161 at or above 4,000ft to KEIYO, to AMUSE at or above 2,500ft, to JONAN at or above 2,000ft.

FIX	DESIGNATION	COORDINATES	Rcmd. Path Terminator	Fix ID (Waypoint Name)	Fly Over	Distance (NM)	MAG Track (TRUE Track)	Turn Direction	Altitude (ft.)	Speed Limit (kt)	Vertical Angle	Navigation Performance
	WESTN	345719.5N 1395939.9E										
	TT162	351720.9N 1400112.7E										
	TT161	352306.1N 1400139.5E										
	KEIYO	352910.6N 1400207.4E										
	AMUSE	353253.0N 1395800.3E										
	JONAN	353416.4N 1395442.1E										
Critical DME	-											
DME GAP	-											
Inappropriate Nav aids	See General Rule 3. Inappropriate NAVAIDs for RNAV1											
			IF	WESTN	-	-	-	-	-	-	-	RNAV1
			TF	TT162	-	20.0	010° (003.6°)	-	-FL140	-	-	RNAV1
			TF	TT161	-	5.8	010° (003.6°)	-	+4000	-	-	RNAV1
			TF	KEIYO	-	6.1	010° (003.6°)	-	-	-	-	RNAV1
			TF	AMUSE	-	5.0	325° (317.8°)	-	+2500	-	-	RNAV1
			TF	JONAN	-	3.0	304° (297.3°)	-	+2000	-	-	RNAV1

JONAN SOUTH NR2 RNAV ARRIVAL

From OTAKI, to TT164 at or below FL140, to TT163 at or above 4,000ft, to KEIYO, to AMUSE at or above 2,500ft, to JONAN at or above 2,000ft.

FIX	DESIGNATION	COORDINATES	Rcmd. Path Terminator	Fix ID (Waypoint Name)	Fly Over	Distance (NM)	MAG Track (TRUE Track)	Turn Direction	Altitude (ft.)	Speed Limit (kt)	Vertical Angle	Navigation Performance
	OTAKI	350140.8N 1402027.3E										
	TT164	352030.0N 1400756.4E										
	TT163	352432.4N 1400514.3E										
	KEIYO	352910.6N 1400207.4E										
	AMUSE	353253.0N 1395800.3E										
	JONAN	353416.4N 1395442.1E										
Critical DME	-											
DME GAP	-											
Inappropriate Nav aids	See General Rule 3. Inappropriate NAVAIDs for RNAV1											
			IF	OTAKI	-	-	-	-	-	-	-	RNAV1
			TF	TT164	-	21.4	338° (331.4°)	-	-FL140	-	-	RNAV1
			TF	TT163	-	4.6	338° (331.3°)	-	+4000	-	-	RNAV1
			TF	KEIYO	-	5.3	338° (331.2°)	-	-	-	-	RNAV1
			TF	AMUSE	-	5.0	325° (317.8°)	-	+2500	-	-	RNAV1
			TF	JONAN	-	3.0	304° (297.3°)	-	+2000	-	-	RNAV1