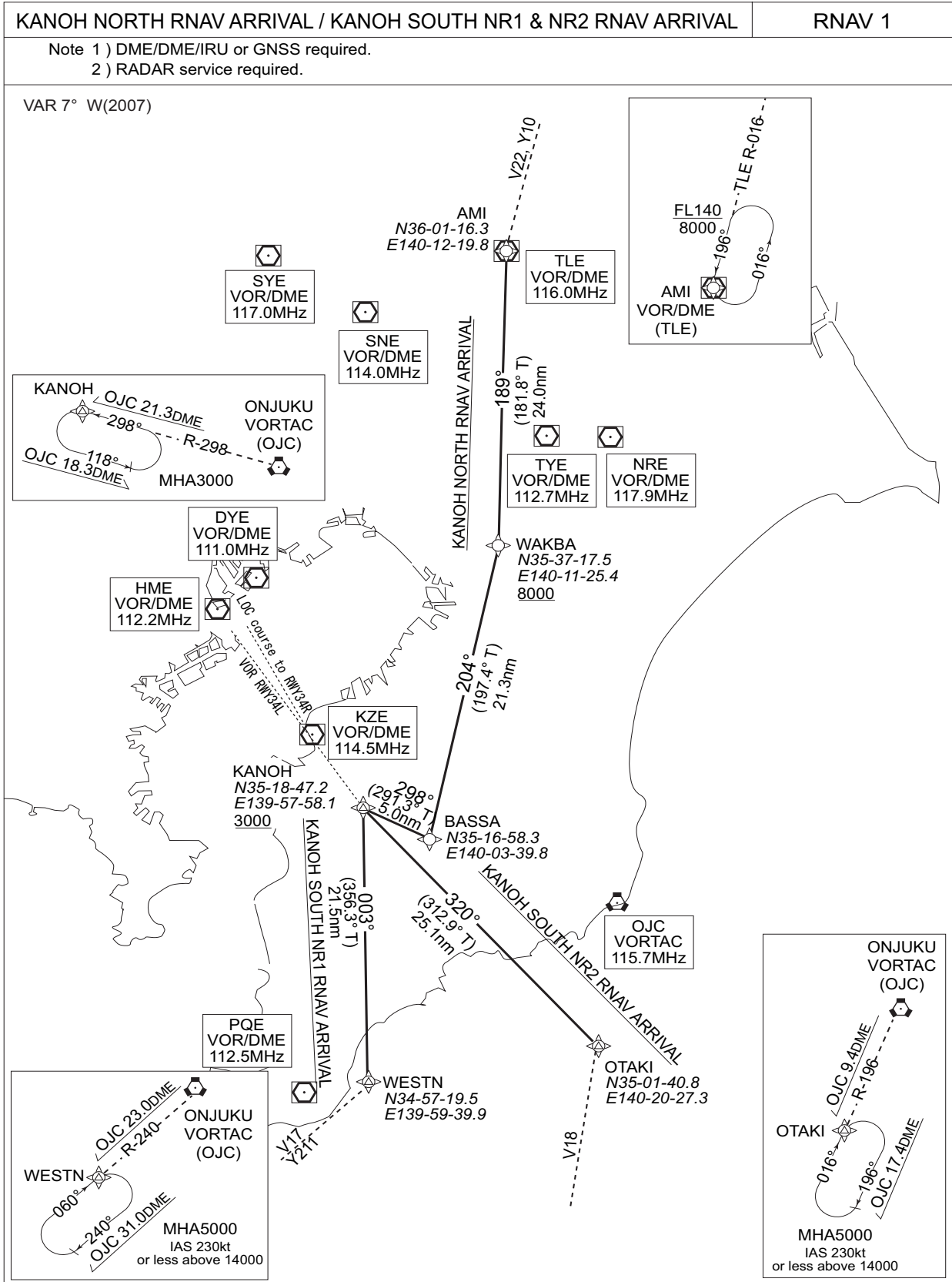


STANDARD ARRIVAL CHART-INSTRUMENT

RNAV STAR  
RWY34R

RJTT / TOKYO INTL



RJTT / TOKYO INTL

RNAV STAR  
RWY34R

KANOH NORTH RNAV ARRIVAL

From TLE, to WAKBA at or above 8,000ft, to BASSA, to KANOH at or above 3,000ft.

FIX	DESIGNATION	COORDINATES
	AMI (TLE)	360116.3N 1401219.8E
	WAKBA	353717.5N 1401125.4E
	BASSA	351658.3N 1400339.8E
	KANOH	351847.2N 1395758.1E
Critical DME	-	
DME GAP	-	
Inappropriate Nav aids	See General Rule 3. Inappropriate NAVAIDs for RNAV1	

Rcmd. Path Terminator	Fix ID (Waypoint Name)	Fly Over	Distance (NM)	MAG Track (TRUE Track)	Turn Direction	Altitude (ft.)	Speed Limit (kt)	Vertical Angle	Navigation Performance
IF	TLE	-	-	-	-	-	-	-	RNAV1
TF	WAKBA	-	24.0	189° (181.8°)	-	+8000	-	-	RNAV1
TF	BASSA	-	21.3	204° (197.4°)	-	-	-	-	RNAV1
TF	KANOH	-	5.0	298° (291.3°)	-	+3000	-	-	RNAV1

KANOH SOUTH NR1 RNAV ARRIVAL

From WESTN, to KANOH at or above 3,000ft.

FIX	DESIGNATION	COORDINATES
	WESTN	345719.5N 1395939.9E
	KANOH	351847.2N 1395758.1E
Critical DME	-	
DME GAP	-	
Inappropriate Nav aids	See General Rule 3. Inappropriate NAVAIDs for RNAV1	

Rcmd. Path Terminator	Fix ID (Waypoint Name)	Fly Over	Distance (NM)	MAG Track (TRUE Track)	Turn Direction	Altitude (ft.)	Speed Limit (kt)	Vertical Angle	Navigation Performance
IF	WESTN	-	-	-	-	-	-	-	RNAV1
TF	KANOH	-	21.5	003° (356.3°)	-	+3000	-	-	RNAV1

KANOH SOUTH NR2 RNAV ARRIVAL

From OTAKI, to KANOH at or above 3,000ft.

FIX	DESIGNATION	COORDINATES
	OTAKI	350140.8N 1402027.3E
	KANOH	351847.2N 1395758.1E
Critical DME	-	
DME GAP	-	
Inappropriate Nav aids	See General Rule 3. Inappropriate NAVAIDs for RNAV1	

Rcmd. Path Terminator	Fix ID (Waypoint Name)	Fly Over	Distance (NM)	MAG Track (TRUE Track)	Turn Direction	Altitude (ft.)	Speed Limit (kt)	Vertical Angle	Navigation Performance
IF	OTAKI	-	-	-	-	-	-	-	RNAV1
TF	KANOH	-	25.1	320° (312.9°)	-	+3000	-	-	RNAV1