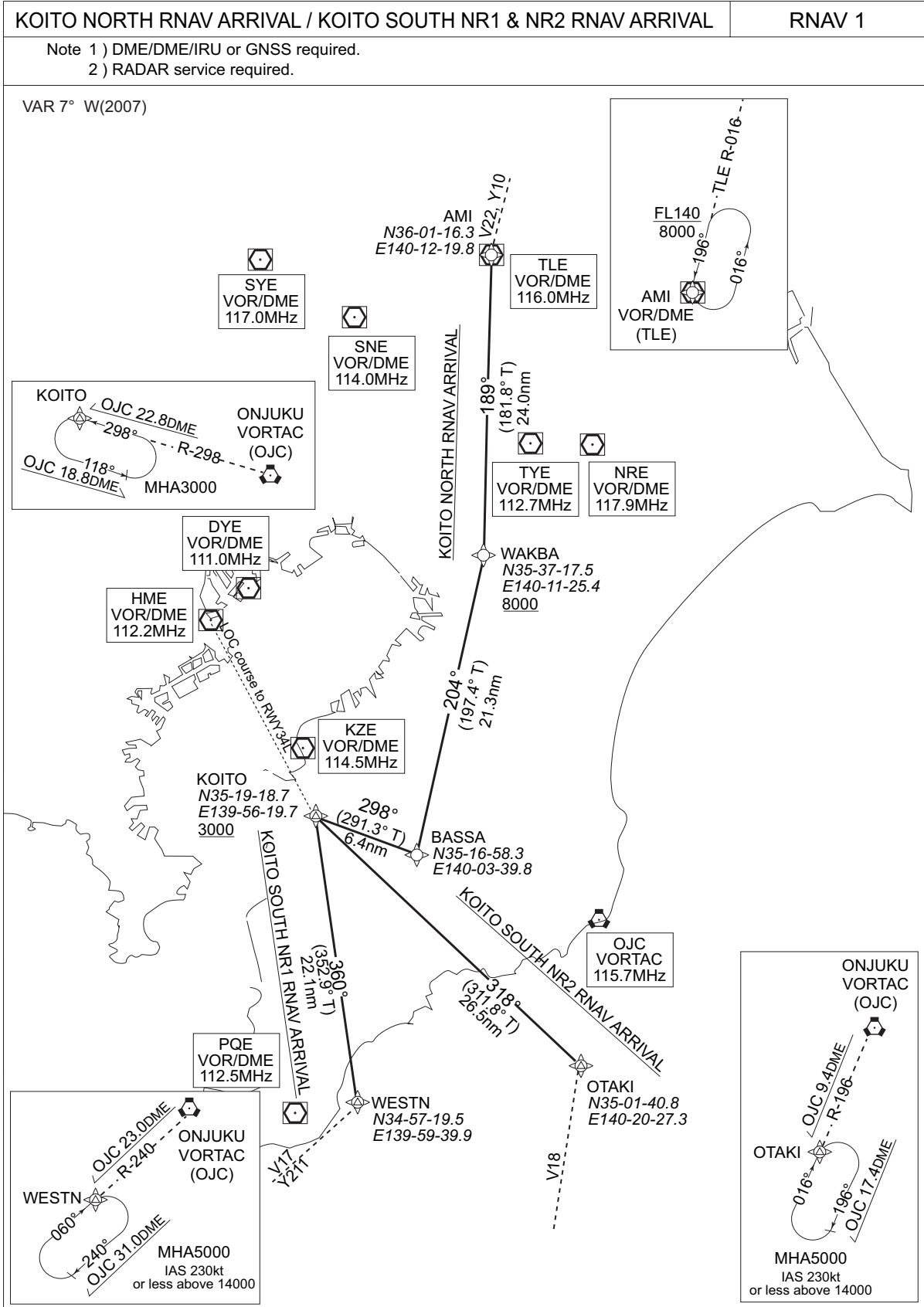


STANDARD ARRIVAL CHART-INSTRUMENT

RJTT / TOKYO INTL

RNAV STAR
RWY34L



RJTT / TOKYO INTL

RNAV STAR
RWY34L

KOITO NORTH RNAV ARRIVAL

From TLE, to WAKBA at or above 8,000ft, to BASSA, to KOITO at or above 3,000ft.

FIX	DESIGNATION	COORDINATES
	AMI (TLE)	360116.3N 1401219.8E
	WAKBA	353717.5N 1401125.4E
	BASSA	351658.3N 1400339.8E
KOITO	351918.7N 1395619.7E	
Critical DME	-	
DME GAP	-	
Inappropriate NavAids	See General Rule 3. Inappropriate NAVAIDs for RNAV1	

Rcmd. Path Terminator	Fix ID (Waypoint Name)	Fly Over	Distance (NM)	MAG Track (TRUE Track)	Turn Direction	Altitude (ft.)	Speed Limit (kt)	Vertical Angle	Navigation Performance
IF	TLE	-	-	-	-	-	-	-	RNAV1
TF	WAKBA	-	24.0	189° (181.8°)	-	+8000	-	-	RNAV1
TF	BASSA	-	21.3	204° (197.4°)	-	-	-	-	RNAV1
TF	KOITO	-	6.4	298° (291.3°)	-	+3000	-	-	RNAV1

KOITO SOUTH NR1 RNAV ARRIVAL

From WESTN, to KOITO at or above 3,000ft.

FIX	DESIGNATION	COORDINATES
	WESTN	345719.5N 1395939.9E
	KOITO	351918.7N 1395619.7E
Critical DME	-	
DME GAP	-	
Inappropriate NavAids	See General Rule 3. Inappropriate NAVAIDs for RNAV1	

Rcmd. Path Terminator	Fix ID (Waypoint Name)	Fly Over	Distance (NM)	MAG Track (TRUE Track)	Turn Direction	Altitude (ft.)	Speed Limit (kt)	Vertical Angle	Navigation Performance
IF	WESTN	-	-	-	-	-	-	-	RNAV1
TF	KOITO	-	22.1	360° (352.9°)	-	+3000	-	-	RNAV1

KOITO SOUTH NR2 RNAV ARRIVAL

From OTAKI, to KOITO at or above 3,000ft.

FIX	DESIGNATION	COORDINATES
	OTAKI	350140.8N 1402027.3E
	KOITO	351918.7N 1395619.7E
Critical DME	-	
DME GAP	-	
Inappropriate NavAids	See General Rule 3. Inappropriate NAVAIDs for RNAV1	

Rcmd. Path Terminator	Fix ID (Waypoint Name)	Fly Over	Distance (NM)	MAG Track (TRUE Track)	Turn Direction	Altitude (ft.)	Speed Limit (kt)	Vertical Angle	Navigation Performance
IF	OTAKI	-	-	-	-	-	-	-	RNAV1
TF	KOITO	-	26.5	318° (311.8°)	-	+3000	-	-	RNAV1