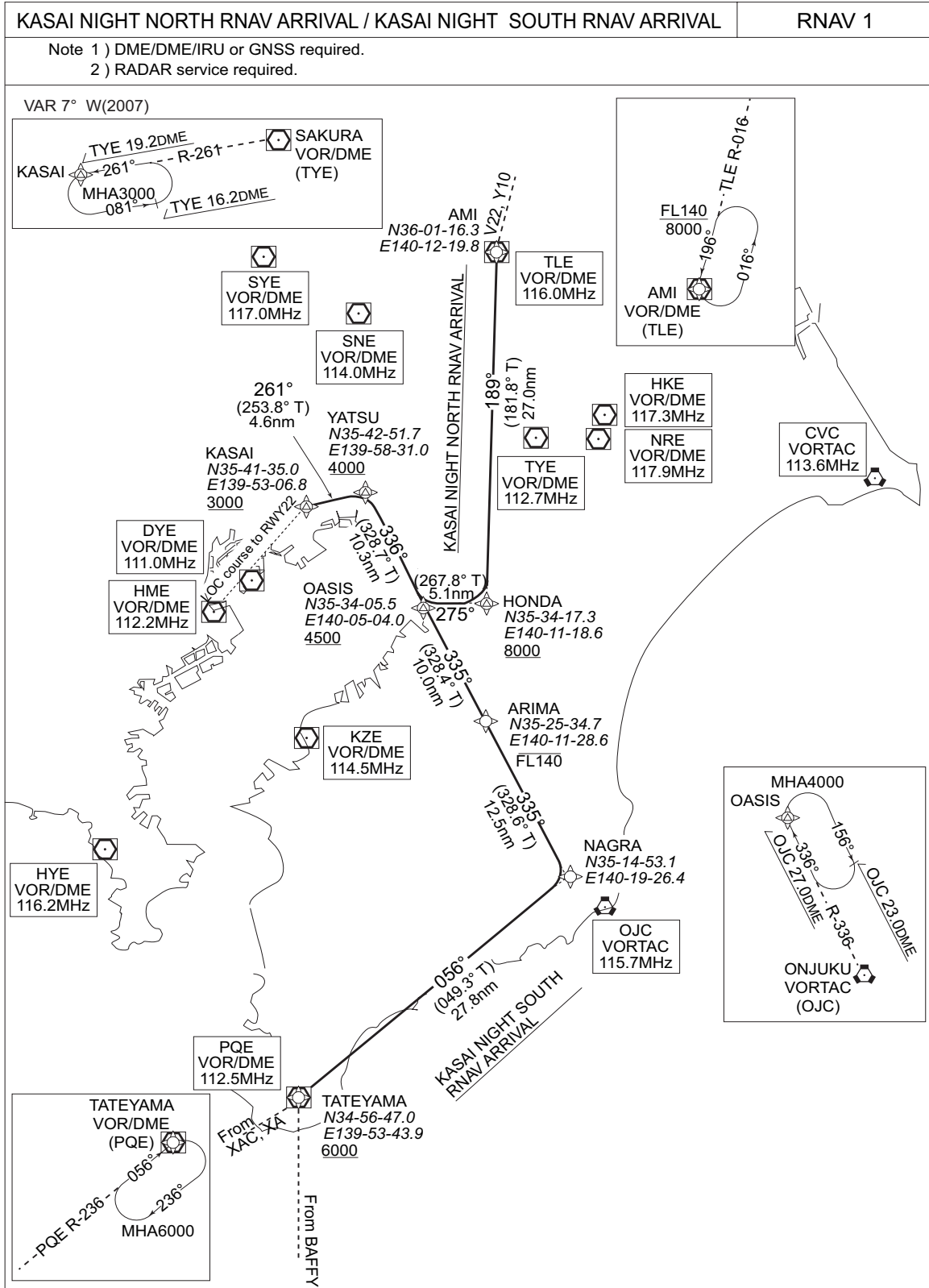


STANDARD ARRIVAL CHART-INSTRUMENT

RJTT / TOKYO INTL

RNAV STAR  
RWY22



RJTT / TOKYO INTL

RNAV STAR  
RWY22

**KASAI NIGHT NORTH RNAV ARRIVAL**

From TLE, to HONDA at or above 8,000ft, turn right to OASIS at or above 4,500ft, to YATSU at or above 4,000ft, turn left to KASAI at or above 3,000ft.

FIX	DESIGNATION	COORDINATES
	AMI (TLE)	360116.3N 1401219.8E
	HONDA	353417.3N 1401118.6E
	OASIS	353405.5N 1400504.0E
	YATSU	354251.7N 1395831.0E
	KASAI	354135.0N 1395306.8E
Critical DME	-	
DME GAP	-	
Inappropriate Nav aids	See General Rule 3. Inappropriate NAVAIDs for RNAV1	

Rcmd. Path Terminator	Fix ID (Waypoint Name)	Fly Over	Distance (NM)	MAG Track (TRUE Track)	Turn Direction	Altitude (ft.)	Speed Limit (kt)	Vertical Angle	Navigation Performance
IF	TLE	-	-	-	-	-	-	-	RNAV1
TF	HONDA	-	27.0	189° (181.8°)	-	+8000	-	-	RNAV1
TF	OASIS	-	5.1	275° (267.8°)	-	+4500	-	-	RNAV1
TF	YATSU	-	10.3	336° (328.7°)	-	+4000	-	-	RNAV1
TF	KASAI	-	4.6	261° (253.8°)	-	+3000	-	-	RNAV1

**KASAI NIGHT SOUTH RNAV ARRIVAL**

From PQE at or above 6,000ft, to NAGRA, turn left to ARIMA at or below FL140, to OASIS at or above 4,500ft, to YATSU at or above 4,000ft, turn left to KASAI at or above 3,000ft.

FIX	DESIGNATION	COORDINATES
	TATEYAMA (PQE)	345647.0N 1395343.9E
	NAGRA	351453.1N 1401926.4E
	ARIMA	352534.7N 1401128.6E
	OASIS	353405.5N 1400504.0E
	YATSU	354251.7N 1395831.0E
	KASAI	354135.0N 1395306.8E
Critical DME	-	
DME GAP	-	
Inappropriate Nav aids	See General Rule 3. Inappropriate NAVAIDs for RNAV1	

Rcmd. Path Terminator	Fix ID (Waypoint Name)	Fly Over	Distance (NM)	MAG Track (TRUE Track)	Turn Direction	Altitude (ft.)	Speed Limit (kt)	Vertical Angle	Navigation Performance
IF	PQE	-	-	-	-	+6000	-	-	RNAV1
TF	NAGRA	-	27.8	056° (049.3°)	-	-	-	-	RNAV1
TF	ARIMA	-	12.5	335° (328.6°)	-	-FL140	-	-	RNAV1
TF	OASIS	-	10.0	335° (328.4°)	-	+4500	-	-	RNAV1
TF	YATSU	-	10.3	336° (328.7°)	-	+4000	-	-	RNAV1
TF	KASAI	-	4.6	261° (253.8°)	-	+3000	-	-	RNAV1