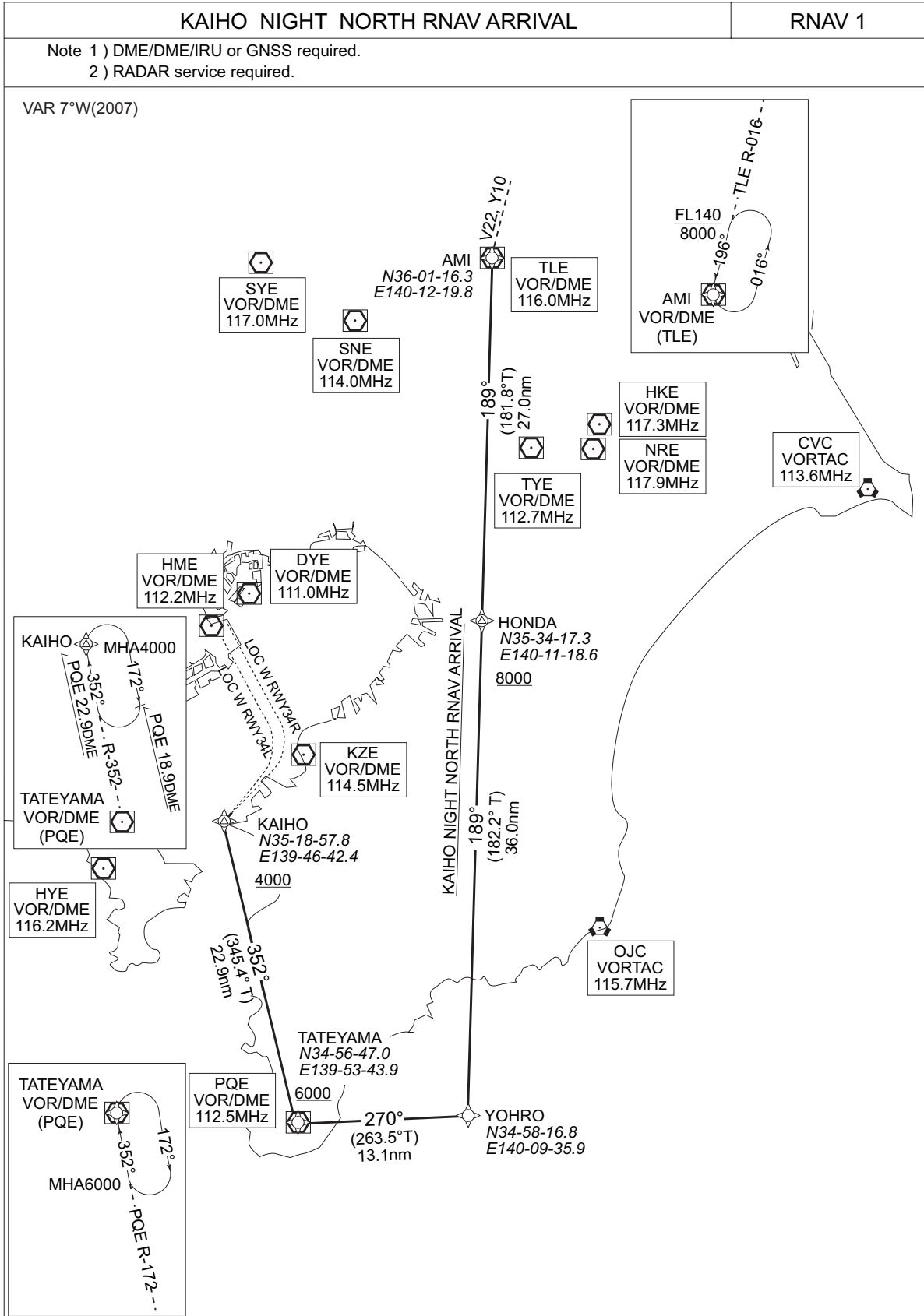


STANDARD ARRIVAL CHART-INSTRUMENT

RJTT / TOKYO INTL

RNAV STAR  
RWY34L/34R



RJTT / TOKYO INTL

RNAV STAR  
RWY34L/34R

KAIHO NIGHT NORTH RNAV ARRIVAL

From TLE, to HONDA at or above 8,000ft, to YOYRO, turn right to TATEYAMA at or above 6,000ft, turn right to KAIHO at or above 4,000ft.

| FIX                   | DESIGNATION   | COORDINATES          |
|-----------------------|---|----------------------|
|                       | AMI (TLE)   | 360116.3N 1401219.8E |
|                       | HONDA   | 353417.3N 1401118.6E |
|                       | YOYRO   | 345816.8N 1400935.9E |
|                       | TATEYAMA(PQE)                                       | 345647.0N 1395343.9E |
| KAIHO                 | 351857.8N 1394642.4E                                |                      |
| Critical DME          | -   |                      |
| DME GAP               | -   |                      |
| Inappropriate Navaids | See General Rule 3. Inappropriate NAVAIDs for RNAV1 |                      |

| Rcmd. Path Terminator | Fix ID (Waypoint Name) | Fly Over | Distance (NM) | MAG Track (TRUE Track) | Turn Direction | Altitude (ft.) | Speed Limit (kt) | Vertical Angle | Navigation Performance |
|-----------------------|------------------------|----------|---------------|------------------------|----------------|----------------|------------------|----------------|------------------------|
| IF                    | TLE                    | -        | -             | -                      | -              | -              | -                | -              | RNAV1                  |
| TF                    | HONDA                  | -        | 27.0          | 189°<br>(181.8°)       | -              | +8000          | -                | -              | RNAV1                  |
| TF                    | YOYRO                  | -        | 36.0          | 189°<br>(182.2°)       | -              | -              | -                | -              | RNAV1                  |
| TF                    | PQE                    | -        | 13.1          | 270°<br>(263.5°)       | -              | +6000          | -                | -              | RNAV1                  |
| TF                    | KAIHO                  | -        | 22.9          | 352°<br>(345.4°)       | -              | +4000          | -                | -              | RNAV1                  |