

## STANDARD ARRIVAL CHART-INSTRUMENT

RJTT / TOKYO INTL

STAR(A)

AMUSE NORTH ARRIVAL

From over TLE VOR/DME, via TLE R-189 to AVION, turn right to intercept and proceed via OJC R-325 to AMUSE via OBITU, then turn left to intercept and proceed via DYE R-120 to JONAN.

Cross HONDA at or above 8,000ft, cross OBITU at or above 4,000ft, cross AMUSE at or above 2,500ft, cross JONAN at or above 2,000ft.

AMUSE SOUTH NR1 ARRIVAL

From over WESTN, via OJC R-240 to OJC VORTAC, via OJC R-325 to AMUSE, then turn left to intercept and proceed via DYE R-120 to JONAN.

Cross OJC R-325/17DME at or below FL140, cross OBITU at or above 4,000ft, cross AMUSE at or above 2,500ft, cross JONAN at or above 2,000ft.

AMUSE SOUTH NR2 ARRIVAL

From over OTAKI, via OJC R-196 to OJC VORTAC, via OJC R-325 to AMUSE, then turn left to intercept and proceed via DYE R-120 to JONAN.

Cross OJC R-325/17DME at or below FL140, cross OBITU at or above 4,000ft, cross AMUSE at or above 2,500ft, cross JONAN at or above 2,000ft.

MESSE NORTH ARRIVAL

From over TLE VOR/DME, via TLE R-189 to KOTBE, turn right to intercept and proceed via OJC R-333 to MESSE via SOGAR, then turn left to ASAHI.

Cross HONDA at or above 8,000ft, cross MESSE at or above 4,000ft, cross ASAHI at or above 3,000ft.

MESSE SOUTH NR1 ARRIVAL

From over WESTN, via OJC R-240 to OJC VORTAC, via OJC R-333 to MESSE, then turn left to ASAHI. Cross OJC R-333/17DME at or below FL140, cross MESSE at or above 4,000ft, cross ASAHI at or above 3,000ft.

MESSE SOUTH NR2 ARRIVAL

From over OTAKI, via OJC R-196 to OJC VORTAC, via OJC R-333 to MESSE, then turn left to ASAHI.

Cross OJC R-333/17DME at or below FL140, cross MESSE at or above 4,000ft, cross ASAHI at or above 3,000ft.

YATSU NORTH ARRIVAL

From over TLE VOR/DME, via TLE R-189 to HONDA, turn right to intercept and proceed via OJC R-336 to YATSU via OASIS, via TYE R-261 to KASAI.

Cross HONDA at or above 8,000ft, cross YATSU at or above 4,000ft, cross KASAI at or above 3,000ft.

RJTT / TOKYO INTL

STAR(B)

YATSU SOUTH NR1 ARRIVAL

From over WESTN, via OJC R-240 to OJC VORTAC, via OJC R-336 to YATSU, via TYE R-261 to KASAI.

Cross OJC R-336/17DME at or below FL140, cross YATSU at or above 4,000ft, cross KASAI at or above 3,000ft.

YATSU SOUTH NR2 ARRIVAL

From over OTAKI, via OJC R-196 to OJC VORTAC, via OJC R-336 to YATSU, via TYE R-261 to KASAI.

Cross OJC R-336 / 17DME at or below FL140, cross YATSU at or above 4,000ft, cross KASAI at or above 3,000ft.

MICKY NORTH ARRIVAL

From over TLE VOR/DME, via TLE R-189 to NANSO, turn right to intercept and proceed via OJC R-298 to KOITO.

Cross HONDA at or above 8,000ft, cross KOITO at or above 3,000ft.

MICKY SOUTH NR1 ARRIVAL

From over WESTN, via OJC R-240 to 6DME, turn left to intercept and proceed via OJC R-298 to KOITO.

Cross KOITO at or above 3,000ft.

MICKY SOUTH NR2 ARRIVAL

From over OTAKI, via OJC R-196 to OJC VORTAC, via OJC R-298 to KOITO.

Cross KOITO at or above 3,000ft.

TOMAS NORTH ARRIVAL

From over TLE VOR/DME, via TLE R-189 to NANSO, turn right to intercept and proceed via OJC R-298 to KANOH.

Cross HONDA at or above 8,000ft, cross KANOH at or above 3,000ft.

TOMAS SOUTH NR1 ARRIVAL

From over WESTN, via OJC R-240 to 6DME, turn left to intercept and proceed via OJC R-298 to KANOH.

Cross KANOH at or above 3,000ft.

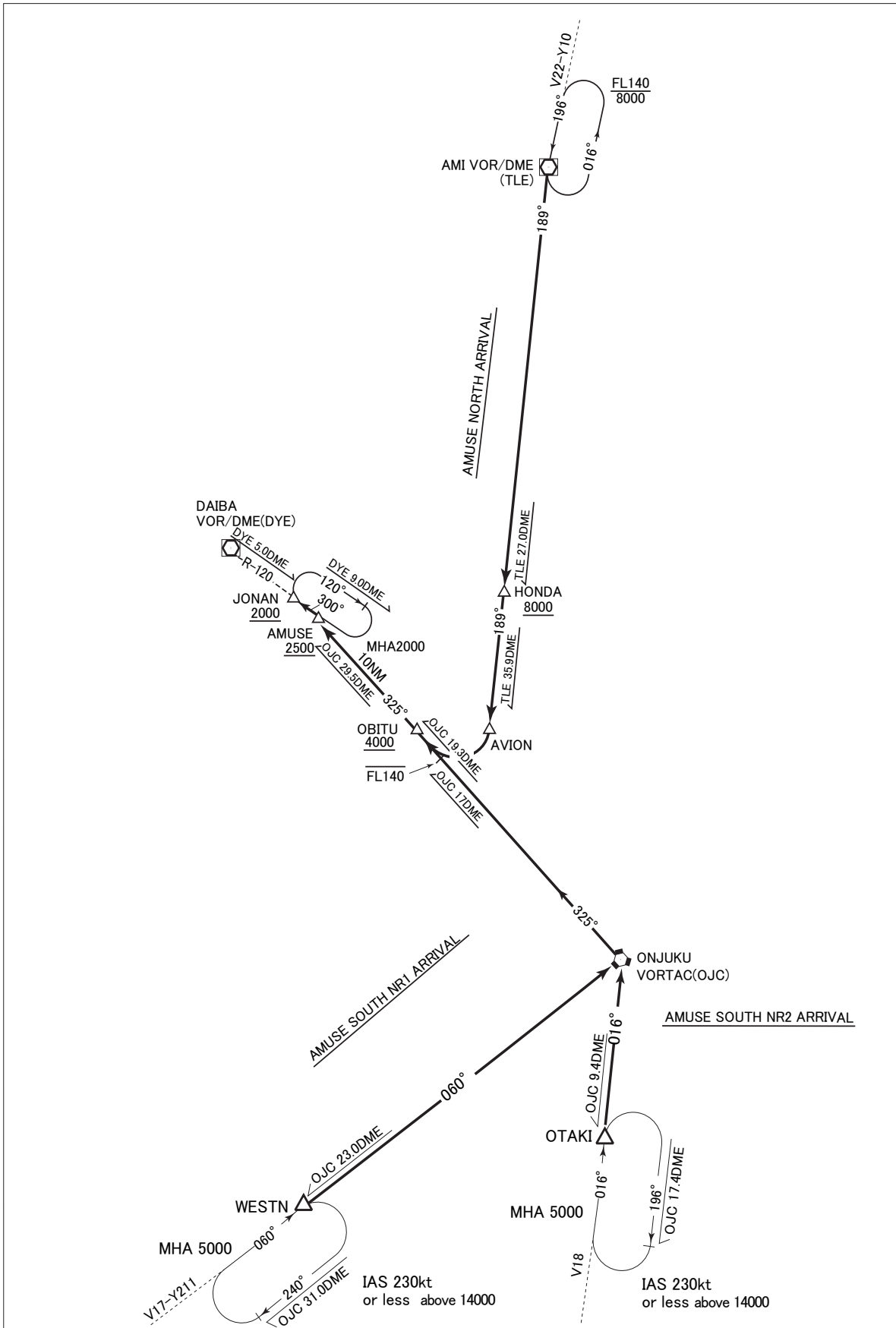
TOMAS SOUTH NR2 ARRIVAL

From over OTAKI, via OJC R-196 to OJC VORTAC, via OJC R-298 to KANOH.

Cross KANOH at or above 3,000ft.

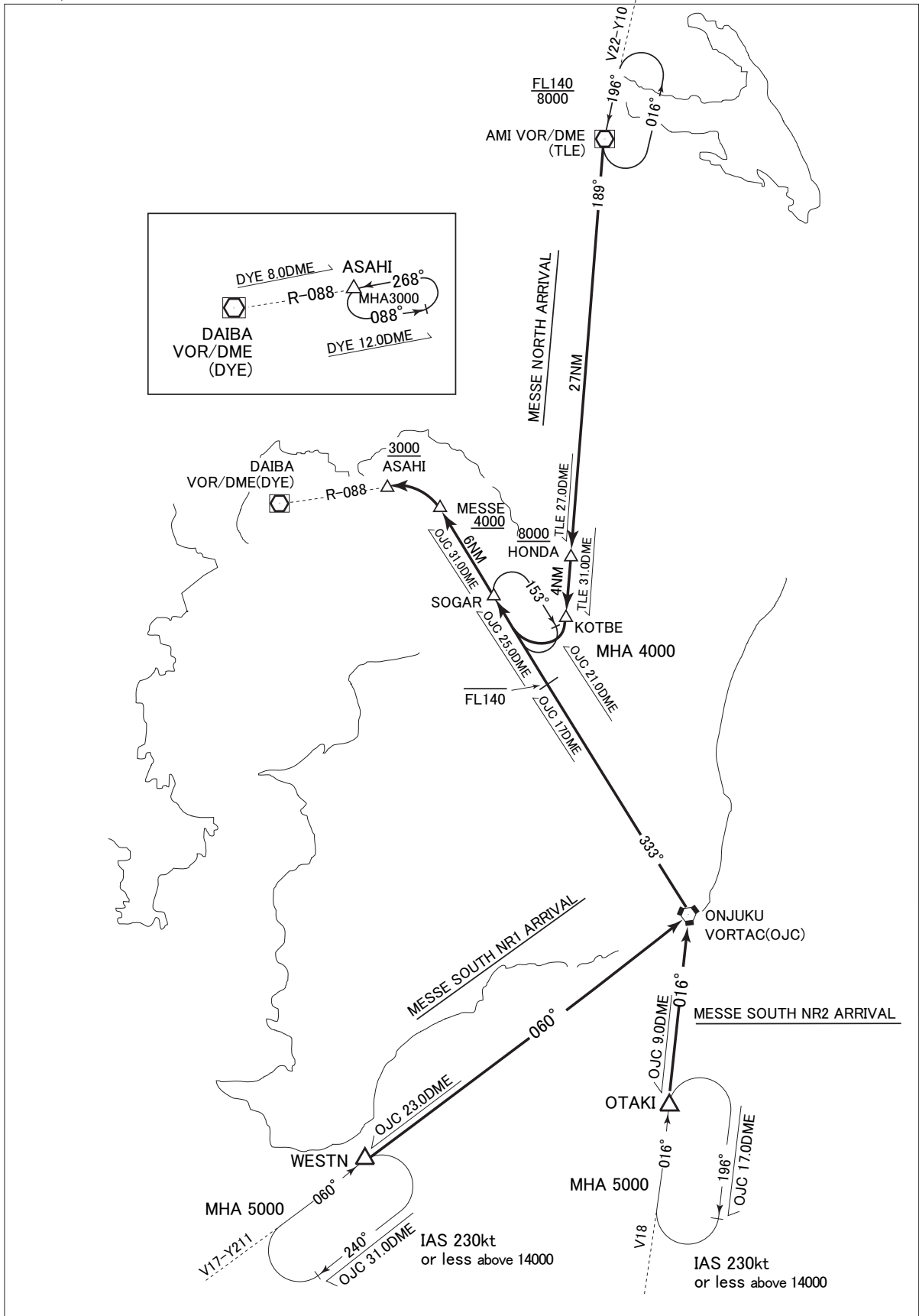
RJTT / TOKYO INTL

STAR(C)



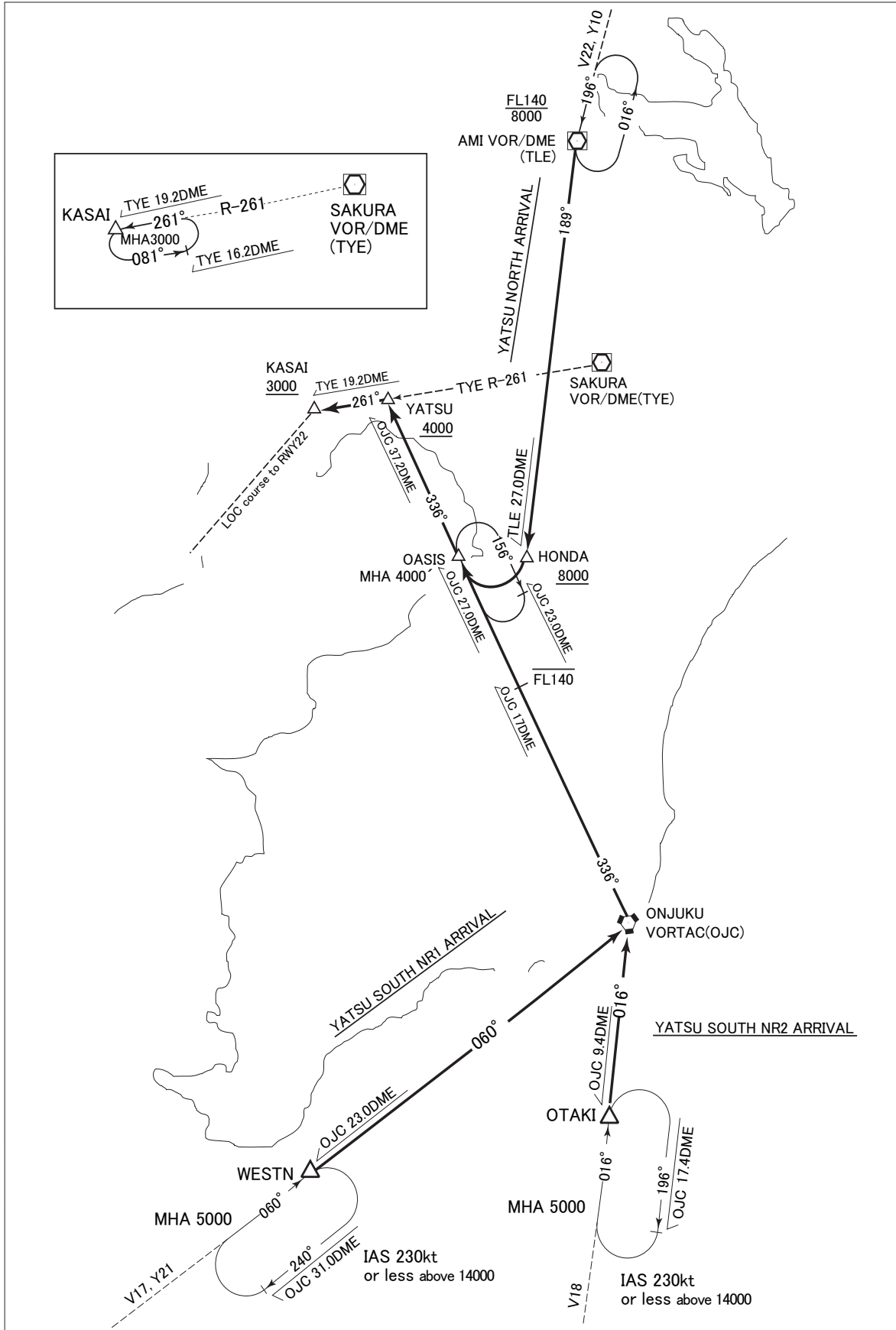
RJTT / TOKYO INTL

STAR(D)



RJTT / TOKYO INTL

STAR(E)



RJTT / TOKYO INTL

STAR(F)

