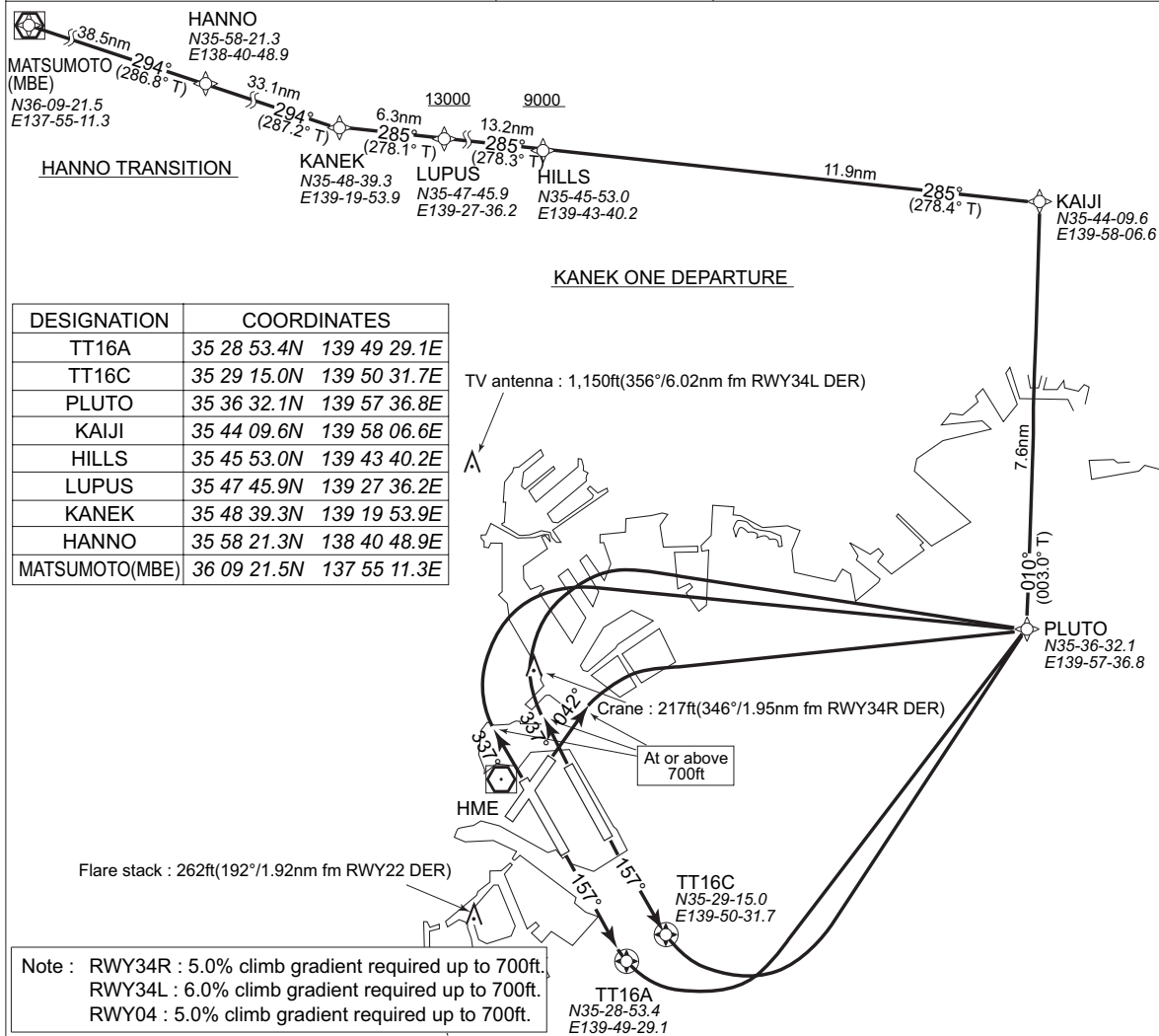


STANDARD DEPARTURE CHART-INSTRUMENT

RJTT / TOKYO INTL

RNAV SID

KANEK ONE RNAV DEPARTURE		RNAV 1
Note 1 ) DME/DME/IRU or GNSS required * The aircraft equipped with only DME/DME/IRU must be able to update its position without delay at the starting point of take-off roll. 2 ) RADAR service required	Critical DME	RWY16R : KZE "from RWY16R DER to 1.2nm" RWY16L : KZE "from RWY16L DER to 1.2nm" RWY34R : KZE "from RWY34R DER to 1.0nm" RWY34L : KZE "from RWY34L DER to 0.5nm" RWY04 : KZE "from RWY04 DER to 1.7nm"
	DME GAP	-
	Inappropriate NavAids	See General Rule 3. Inappropriate NAVAIDs for RNAV1



**KANEK ONE RNAV DEPARTURE**

RWY16R : Climb on heading 157°M at or above 800ft, direct to TT16A, turn left direct to PLUTO, then to KAIJI, then to HILLS at or above 9,000ft, then to LUPUS at or above 13,000ft, then to KANEK at or above FL170.

RWY16L : Climb on heading 157°M at or above 800ft, direct to TT16C, turn left direct to PLUTO, then to KAIJI, then to HILLS at or above 9,000ft, then to LUPUS at or above 13,000ft, then to KANEK at or above FL170.

RWY34R/34L : Climb on heading 337°M at or above 700ft, turn right direct to PLUTO, turn left to KAIJI, then to HILLS at or above 9,000ft, then to LUPUS at or above 13,000ft, then to KANEK at or above FL170.

RWY04 : Climb on heading 042°M at or above 700ft, turn right direct to PLUTO, then to KAIJI, then to HILLS at or above 9,000ft, then to LUPUS at or above 13,000ft, then to KANEK at or above FL170.

Note : RWY34R : 5.0% climb gradient required up to 700ft.  
 RWY34L : 6.0% climb gradient required up to 700ft.  
 RWY04 : 5.0% climb gradient required up to 700ft.

**HANNO TRANSITION**

From KANEK at or above FL170, then to HANNO at or above FL240, then to MATSUMOTO(MBE) at assigned altitude.

RJTT / TOKYO INTL

RNAV SID and TRANSITION

KANEK ONE RNAV DEPARTURE

RWY16R

Rcmd. Path Terminator	Fix ID (Waypoint Name)	Fly Over	Distance (NM)	MAG Track (TRUE Track)	Turn Direction	Altitude (FT)	Speed Limit(kt)	Vertical Angle	Navigation Performance
VA	—	—	—	157° (149.9°)	—	800	—	—	RNAV1
DF	TT16A	Y	—	—	—	—	—	—	RNAV1
DF	PLUTO	—	—	—	L	—	—	—	RNAV1
TF	KAIJI	—	7.6	010° (003.0°)	—	—	—	—	RNAV1
TF	HILLS	—	11.9	285° (278.4°)	—	+9000	—	—	RNAV1
TF	LUPUS	—	13.2	285° (278.3°)	—	+13000	—	—	RNAV1
TF	KANEK	—	6.3	285° (278.1°)	—	+FL170	—	—	RNAV1

RWY16L

Rcmd. Path Terminator	Fix ID (Waypoint Name)	Fly Over	Distance (NM)	MAG Track (TRUE Track)	Turn Direction	Altitude (FT)	Speed Limit(kt)	Vertical Angle	Navigation Performance
VA	—	—	—	157° (149.9°)	—	800	—	—	RNAV1
DF	TT16C	Y	—	—	—	—	—	—	RNAV1
DF	PLUTO	—	—	—	L	—	—	—	RNAV1
TF	KAIJI	—	7.6	010° (003.0°)	—	—	—	—	RNAV1
TF	HILLS	—	11.9	285° (278.4°)	—	+9000	—	—	RNAV1
TF	LUPUS	—	13.2	285° (278.3°)	—	+13000	—	—	RNAV1
TF	KANEK	—	6.3	285° (278.1°)	—	+FL170	—	—	RNAV1

RWY34L/34R

Rcmd. Path Terminator	Fix ID (Waypoint Name)	Fly Over	Distance (NM)	MAG Track (TRUE Track)	Turn Direction	Altitude (FT)	Speed Limit(kt)	Vertical Angle	Navigation Performance
VA	—	—	—	337° (329.9°)	—	700	—	—	RNAV1
DF	PLUTO	—	—	—	R	—	—	—	RNAV1
TF	KAIJI	—	7.6	010° (003.0°)	—	—	—	—	RNAV1
TF	HILLS	—	11.9	285° (278.4°)	—	+9000	—	—	RNAV1
TF	LUPUS	—	13.2	285° (278.3°)	—	+13000	—	—	RNAV1
TF	KANEK	—	6.3	285° (278.1°)	—	+FL170	—	—	RNAV1

Note: RWY34R : 5.0% climb gradient required up to 700ft.  
RWY34L : 6.0% climb gradient required up to 700ft.

RWY04

Rcmd. Path Terminator	Fix ID (Waypoint Name)	Fly Over	Distance (NM)	MAG Track (TRUE Track)	Turn Direction	Altitude (FT)	Speed Limit(kt)	Vertical Angle	Navigation Performance
VA	—	—	—	042° (035.1°)	—	700	—	—	RNAV1
DF	PLUTO	—	—	—	R	—	—	—	RNAV1
TF	KAIJI	—	7.6	010° (003.0°)	—	—	—	—	RNAV1
TF	HILLS	—	11.9	285° (278.4°)	—	+9000	—	—	RNAV1
TF	LUPUS	—	13.2	285° (278.3°)	—	+13000	—	—	RNAV1
TF	KANEK	—	6.3	285° (278.1°)	—	+FL170	—	—	RNAV1

Note: RWY04 : 5.0% climb gradient required up to 700ft.

## RJTT / TOKYO INTL

## RNAV SID and TRANSITION

HANNO TRANSITION

Rcmd. Path Terminator	Fix ID (Waypoint Name)	Fly Over	Distance (NM)	MAG Track (TRUE Track)	Turn Direction	Altitude (FT)	Speed Limit(kt)	Vertical Angle	Navigation Performance
IF	KANEK	—	—	—	—	+FL170	—	—	RNAV1
TF	HANNO	—	33.1	294° (287.2°)	—	+FL240	—	—	RNAV1
TF	MATSUMOTO (MBE)	—	38.5	294° (287.2°)	—	—	—	—	RNAV1