

STANDARD DEPARTURE CHART-INSTRUMENT

RJTT / TOKYO INTL

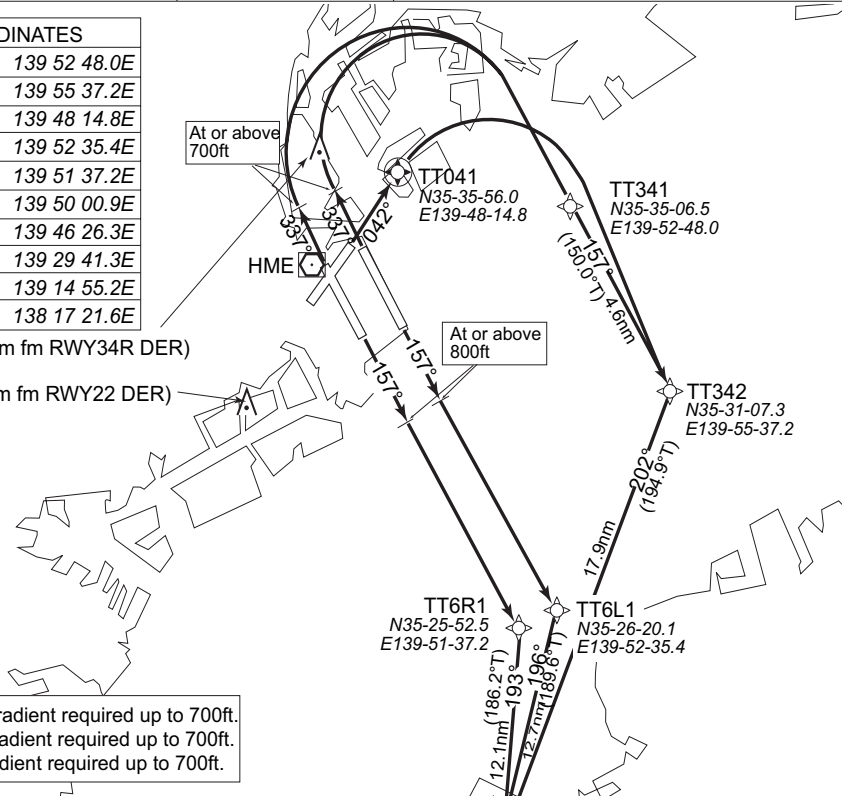
RNAV SID and TRANSITION

NANAM ONE RNAV DEPARTURE		RNAV 1
Note 1) DME/DME/IRU or GNSS required * The aircraft equipped with only DME/DME/IRU must be able to update its position without delay at the starting point of take-off roll. 2) RADAR service required	Critical DME	RWY16R : KZE "from RWY16R DER to 1.2nm" RWY16L : KZE "from RWY16L DER to 1.2nm" RWY34R : KZE "from RWY34R DER to 1.0nm" RWY34L : KZE "from RWY34L DER to 0.5nm" RWY04 : KZE "from RWY04 DER to 1.7nm"
	DME GAP	-
Inappropriate NavAids		See General Rule 3. Inappropriate NAVAIDs for RNAV1

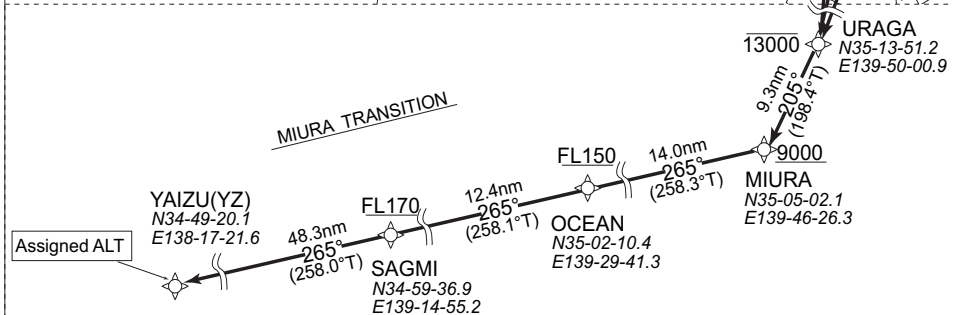
DESIGNATION	COORDINATES
TT341	35 35 06.5N 139 52 48.0E
TT342	35 31 07.3N 139 55 37.2E
TT041	35 35 56.0N 139 48 14.8E
TT6L1	35 26 20.1N 139 52 35.4E
TT6R1	35 25 52.5N 139 51 37.2E
URAGA	35 13 51.2N 139 50 00.9E
MIURA	35 05 02.1N 139 46 26.3E
OCEAN	35 02 10.4N 139 29 41.3E
SAGMI	34 59 36.9N 139 14 55.2E
YAIZU(YZ)	34 49 20.1N 138 17 21.6E

Crane : 217ft(346°/1.95nm fm RWY34R DER)

Flare stack : 262ft(192°/1.92nm fm RWY22 DER)



Note : RWY34R : 5.0% climb gradient required up to 700ft.
 RWY34L : 6.0% climb gradient required up to 700ft.
 RWY04 : 5.0% climb gradient required up to 700ft.



NANAM ONE RNAV DEPARTURE
 RWY16R : Climb on heading 157°M at or above 800ft, direct to TT6R1, then to URAGA at or below 13,000ft.
 RWY16L : Climb on heading 157°M at or above 800ft, direct to TT6L1, then to URAGA at or below 13,000ft.
 RWY34R/34L : Climb on heading 337°M at or above 700ft, turn right direct to TT341, then to TT342, then to URAGA at or below 13,000ft.

Note : RWY34R : 5.0% climb gradient required up to 700ft.
 RWY34L : 6.0% climb gradient required up to 700ft.
 RWY04 : 5.0% climb gradient required up to 700ft.

MIURA TRANSITION
 From URAGA at or below 13,000ft, then to MIURA at or above 9,000ft, then to OCEAN at or above FL150, then to SAGMI at or above FL170, then to YAIZU(YZ) at assigned altitude.

Note : Aircraft unable to comply with altitude restrictions, inform TOKYO DELIVERY for alternate procedure when requesting ATC clearance.

RJTT / TOKYO INTL

RNAV SID and TRANSITION

NANAM ONE RNAV DEPARTURE

RWY16R

Rcmd. Path Terminator	Fix ID (Waypoint Name)	Fly Over	Distance (NM)	MAG Track (TRUE Track)	Turn Direction	Altitude (FT)	Speed Limit(kt)	Vertical Angle	Navigation Performance
VA	—	—	—	157° (149.9°)	—	800	—	—	RNAV1
DF	TT6R1	—	—	—	—	—	—	—	RNAV1
TF	URAGA	—	12.1	193° (186.2°)	—	-13000	—	—	RNAV1

RWY16L

Rcmd. Path Terminator	Fix ID (Waypoint Name)	Fly Over	Distance (NM)	MAG Track (TRUE Track)	Turn Direction	Altitude (FT)	Speed Limit(kt)	Vertical Angle	Navigation Performance
VA	—	—	—	157° (149.9°)	—	800	—	—	RNAV1
DF	TT6L1	—	—	—	—	—	—	—	RNAV1
TF	URAGA	—	12.7	196° (189.6°)	—	-13000	—	—	RNAV1

RWY34L/34R

Rcmd. Path Terminator	Fix ID (Waypoint Name)	Fly Over	Distance (NM)	MAG Track (TRUE Track)	Turn Direction	Altitude (FT)	Speed Limit(kt)	Vertical Angle	Navigation Performance
VA	—	—	—	337° (329.9°)	—	700	—	—	RNAV1
DF	TT341	—	—	—	R	—	—	—	RNAV1
TF	TT342	—	4.6	157° (150.0°)	—	—	—	—	RNAV1
TF	URAGA	—	17.9	202° (194.9°)	—	-13000	—	—	RNAV1

Note : RWY34R : 5.0% climb gradient required up to 700ft.
RWY34L : 6.0% climb gradient required up to 700ft.

RWY04

Rcmd. Path Terminator	Fix ID (Waypoint Name)	Fly Over	Distance (NM)	MAG Track (TRUE Track)	Turn Direction	Altitude (FT)	Speed Limit(kt)	Vertical Angle	Navigation Performance
VA	—	—	—	042° (035.1°)	—	700	—	—	RNAV1
DF	TT041	Y	—	—	—	—	—	—	RNAV1
DF	TT342	—	—	—	R	—	—	—	RNAV1
TF	URAGA	—	17.9	202° (194.9°)	—	-13000	—	—	RNAV1

Note : RWY 04 : 5.0% climb gradient required up to 700ft.

MIURA Transition

Rcmd. Path Terminator	Fix ID (Waypoint Name)	Fly Over	Distance (NM)	MAG Track (TRUE Track)	Turn Direction	Altitude (FT)	Speed Limit(kt)	Vertical Angle	Navigation Performance
IF	URAGA	—	—	—	—	-13000	—	—	RNAV1
TF	MIURA	—	9.3	205° (198.4°)	—	+9000	—	—	RNAV1
TF	OCEAN	—	14.0	265° (258.3°)	—	+FL150	—	—	RNAV1
TF	SAGMI	—	12.4	265° (258.1°)	—	+FL170	—	—	RNAV1
TF	YAIZU(YZ)	—	48.3	265° (258.0°)	—	—	—	—	RNAV1

Note : Aircraft unable to comply with altitude restrictions, inform TOKYO DELIVERY for alternate procedure when requesting ATC clearance.