

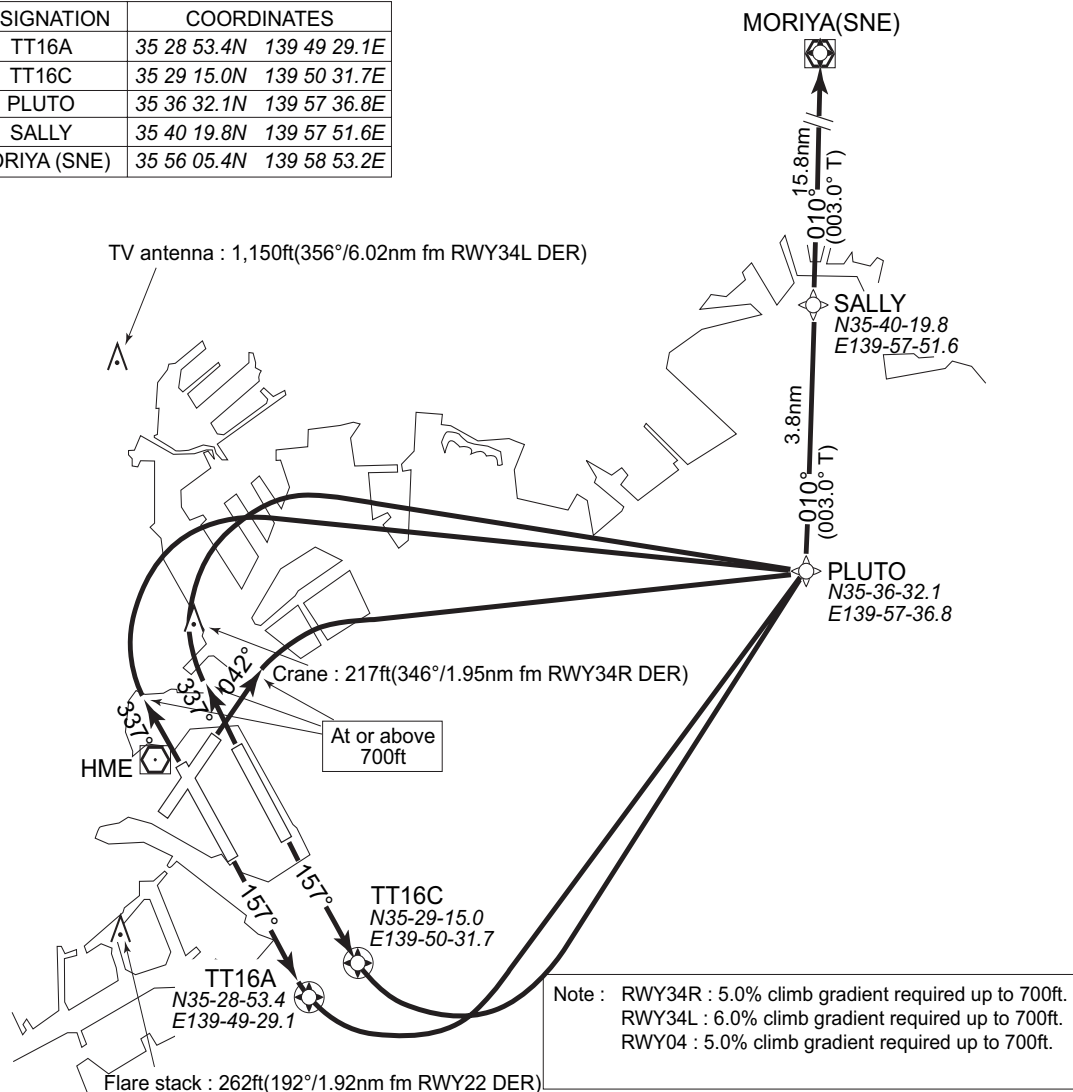
STANDARD DEPARTURE CHART-INSTRUMENT

RJTT / TOKYO INTL

RNAV SID

PLUTO THREE RNAV DEPARTURE		RNAV 1
Note 1) DME/DME/IRU or GNSS required * The aircraft equipped with only DME/DME/IRU must be able to update its position without delay at the starting point of take-off roll. 2) RADAR service required	Critical DME	RWY16R : KZE "from RWY16R DER to 1.2nm" RWY16L : KZE "from RWY16L DER to 1.2nm" RWY34R : KZE "from RWY34R DER to 1.0nm" RWY34L : KZE "from RWY34L DER to 0.5nm" RWY04 : KZE "from RWY04 DER to 1.7nm"
	DME GAP	-
	Inappropriate NavAids	See General Rule 3. Inappropriate NAVAIDs for RNAV1

DESIGNATION	COORDINATES
TT16A	35 28 53.4N 139 49 29.1E
TT16C	35 29 15.0N 139 50 31.7E
PLUTO	35 36 32.1N 139 57 36.8E
SALLY	35 40 19.8N 139 57 51.6E
MORIYA (SNE)	35 56 05.4N 139 58 53.2E



PLUTO THREE RNAV DEPARTURE

- RWY16R : Climb on heading 157°M at or above 800ft, direct to TT16A, turn left direct to PLUTO, then to SALLY, then to MORIYA at or below 13,000ft.
- RWY16L : Climb on heading 157°M at or above 800ft, direct to TT16C, turn left direct to PLUTO, then to SALLY, then to MORIYA at or below 13,000ft.
- RWY34R/34L : Climb on heading 337°M at or above 700ft, turn right direct to PLUTO, then to SALLY, then to MORIYA at or below 13,000ft.
- RWY04 : Climb on heading 042°M at or above 700ft, turn right direct to PLUTO, then to SALLY, then to MORIYA at or below 13,000ft.

Note : RWY34R : 5.0% climb gradient required up to 700ft.
 RWY34L : 6.0% climb gradient required up to 700ft.
 RWY04 : 5.0% climb gradient required up to 700ft.

RJTT / TOKYO INTL

RNAV SID

PLUTO THREE RNAV DEPARTURE

RWY16R

Rcmd. Path Terminator	Fix ID (Waypoint Name)	Fly Over	Distance (NM)	MAG Track (TRUE Track)	Turn Direction	Altitude (FT)	Speed Limit(kt)	Vertical Angle	Navigation Performance
VA	—	—	—	157° (149.9°)	—	800	—	—	RNAV1
DF	TT16A	Y	—	—	—	—	—	—	RNAV1
DF	PLUTO	—	—	—	L	—	—	—	RNAV1
TF	SALLY	—	3.8	010° (003.0°)	—	—	—	—	RNAV1
TF	MORIYA(SNE)	—	15.8	010° (003.0°)	—	-13000	—	—	RNAV1

RWY16L

Rcmd. Path Terminator	Fix ID (Waypoint Name)	Fly Over	Distance (NM)	MAG Track (TRUE Track)	Turn Direction	Altitude (FT)	Speed Limit(kt)	Vertical Angle	Navigation Performance
VA	—	—	—	157° (149.9°)	—	800	—	—	RNAV1
DF	TT16C	Y	—	—	—	—	—	—	RNAV1
DF	PLUTO	—	—	—	L	—	—	—	RNAV1
TF	SALLY	—	3.8	010° (003.0°)	—	—	—	—	RNAV1
TF	MORIYA(SNE)	—	15.8	010° (003.0°)	—	-13000	—	—	RNAV1

RWY34L/34R

Rcmd. Path Terminator	Fix ID (Waypoint Name)	Fly Over	Distance (NM)	MAG Track (TRUE Track)	Turn Direction	Altitude (FT)	Speed Limit(kt)	Vertical Angle	Navigation Performance
VA	—	—	—	337° (329.9°)	—	700	—	—	RNAV1
DF	PLUTO	—	—	—	R	—	—	—	RNAV1
TF	SALLY	—	3.8	010° (003.0°)	—	—	—	—	RNAV1
TF	MORIYA(SNE)	—	15.8	010° (003.0°)	—	-13000	—	—	RNAV1

Note : RWY34R : 5.0% climb gradient required up to 700ft.
RWY34L : 6.0% climb gradient required up to 700ft.

RWY04

Rcmd. Path Terminator	Fix ID (Waypoint Name)	Fly Over	Distance (NM)	MAG Track (TRUE Track)	Turn Direction	Altitude (FT)	Speed Limit(kt)	Vertical Angle	Navigation Performance
VA	—	—	—	042° (035.1°)	—	700	—	—	RNAV1
DF	PLUTO	—	—	—	R	—	—	—	RNAV1
TF	SALLY	—	3.8	010° (003.0°)	—	—	—	—	RNAV1
TF	MORIYA(SNE)	—	15.8	010° (003.0°)	—	-13000	—	—	RNAV1

Note : RWY 04 : 5.0% climb gradient required up to 700ft.