

ROUTES (Bi Directional):

MAX 125 KIAS

Note: See OMDB AD 2.22.8.1
for VFR route description

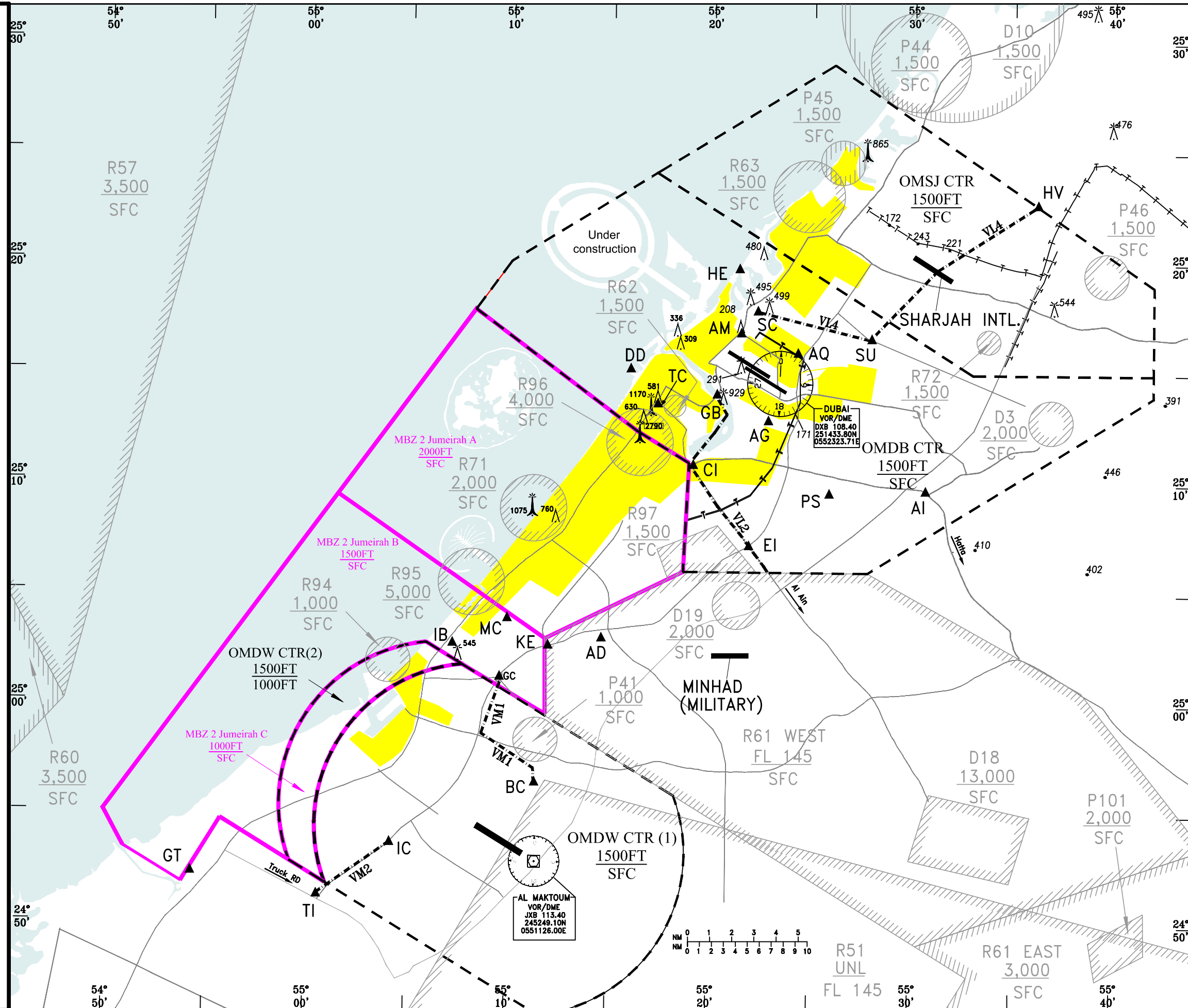
REPORTING POINTS

- AD (Autodrome):**
DXB R213/14.1 DME 25°03'00"N 055°14'37"E
- AG (Al Badia Golf Course):**
DXB R195/1.8 DME 25°12'50"N 055°22'50"E
- AI (Al Awir Intersection):**
DXB R125/8.2 DME 25°09'43"N 055°30'41"E
- AM (Al Mulla Plaza):**
DXB R321/2.9 DME 25°16'50"N 055°21'27"E
- AQ (Al Qusais Lake):**
DXB R029/1.6 DME 25°15'55"N 055°24'18"E
- CI (Country Club Intersection):**
DXB R224/5.3 DME 25°10'48"N 055°19'12"E
- DD (Dry Dock):**
DXB R274/6.8 DME 25°15'11"N 055°15'58"E
- EI (Emirates Highway Intersection):**
DXB R189/7.5 DME 25°07'12"N 055°21'55"E
- GB (Garhoud Bridge):**
DXB R257/2.9 DME 25°14'00"N 055°20'13"E
- HE (Harbour Entrance):**
DXB R338/5.4 DME 25°19'40"N 055°21'19"E
- HV (Al Hillew Village):**
SHR R056/5.4 DME 25°22'40"N 055°36'13"E
- MC (Montgomery Golf Course):**
JXB R352/11.1 DME 25°03'51"N 055°09'57"E
- KE (Intersection Al Khail and Emirates Roads):**
JXB R002/9.7 DME 25°02'38"N 055°12'00"E
- PS (Al Aweer Power Station):**
DXB R154/5.5 DME 25°09'33"N 055°25'57"E
- SC (Sahara Centre):**
DXB R341/3.4 DME 25°17'48"N 055°22'18"E
SHR R255/8.3 DME
- SU (Sharjah University Flyover):**
SHR R222/4.3 DME 25°16'35"N 055°27'57"E
DXB R062/4.6 DME
- TC (Trade Centre):**
DXB R259/5.6 DME 25°13'37"N 055°17'20"E

**Al Maktoum
REPORTING POINTS**

Note: See OMDW AD 2.22.8.1
for VFR route description

- BC (Bird Cage):**
JXB R358/3.6 DME 24°56'25"N 055°11'24"E
- GC (Green Community Roundabout):**
JXB R347/8.5 DME 25°01'09"N 055°09'36"E
- GT (Ghantoot):**
JXB R268/15.7 DME 24°52'17"N 054°54'14"E
- IB (Ibn Battuta Mall):**
JXB R337/10.6 DME 25°02'41"N 055°07'14"E
- TI (Track Road Intersection):**
JXB R259/9.9 DME 24°51'18"N 055°00'37"E



CHANGES: Amended OMDW CTR, MBZ, Reporting Points Table. Removed VM3, VM4, Added TI. Editorial.