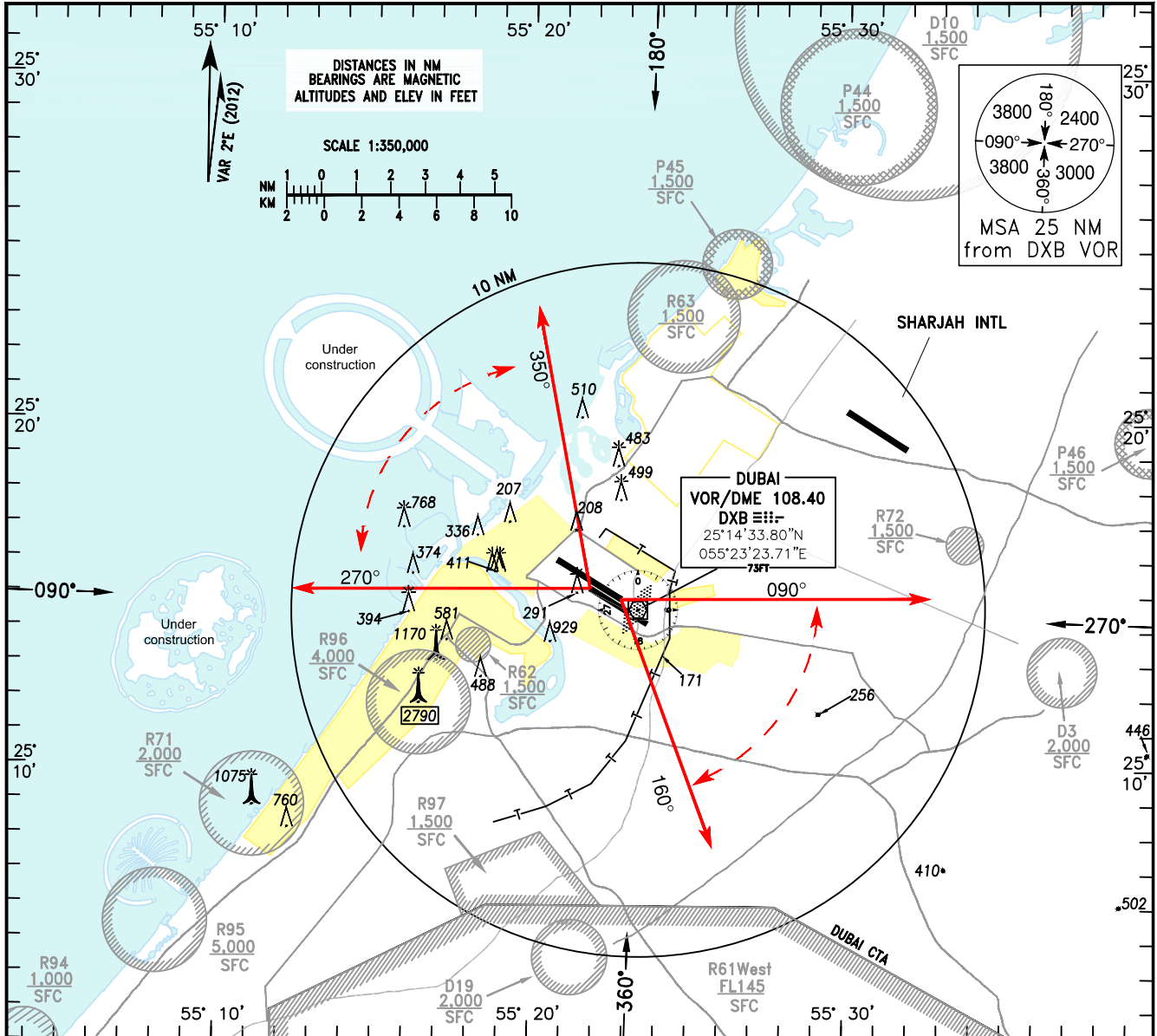


STANDARD AD ELEV 62 FT
DEPARTURE CHART-ICAO

TOWER	118.75/119.55
GROUND	118.35
APPROACH	124.90
ATIS	131.70

DUBAI / Intl.
OMNI DIRECTIONAL DEPARTURE
RWY 12L/R & RWY 30L/R



ATC will issue clearance for departure between indicated tracks as follows:

TL FL150
TA 13000

AFTER DEPARTURE FLY HEADING DEG CLIMB TO FEET

After departure remain on Tower frequency until instructed to change frequency

Minimum climb gradient 5% (300FT per NM) see OMDB AD 2.22.4.4.
Advise ATC at startup if unable to comply.
(Procedures design gradient until passing 2000FT : RWY 12L/R 3.3%, RWY 30L/R 5%)

Aircraft shall climb straight ahead to 1000FT then turn to assigned heading.

Turn before the departure end of runway prohibited.

Loss of communications

Conform to the requirements specified in ICAO Annex 2, Chapter 3, paragraph 3.6.5.2
Note: The requirement maintain the last assigned speed and level, or minimum flight altitude if higher, for a period of 7 minutes is amended to 3 minutes.

Following unsuccessful attempts to communicate via RTF call Dubai Approach on +971 4 224 4700

DESDI and BUBIN are designated holds for traffic landing at Dubai International Airport

CHANGES: Amended AD ELEV, VAR.