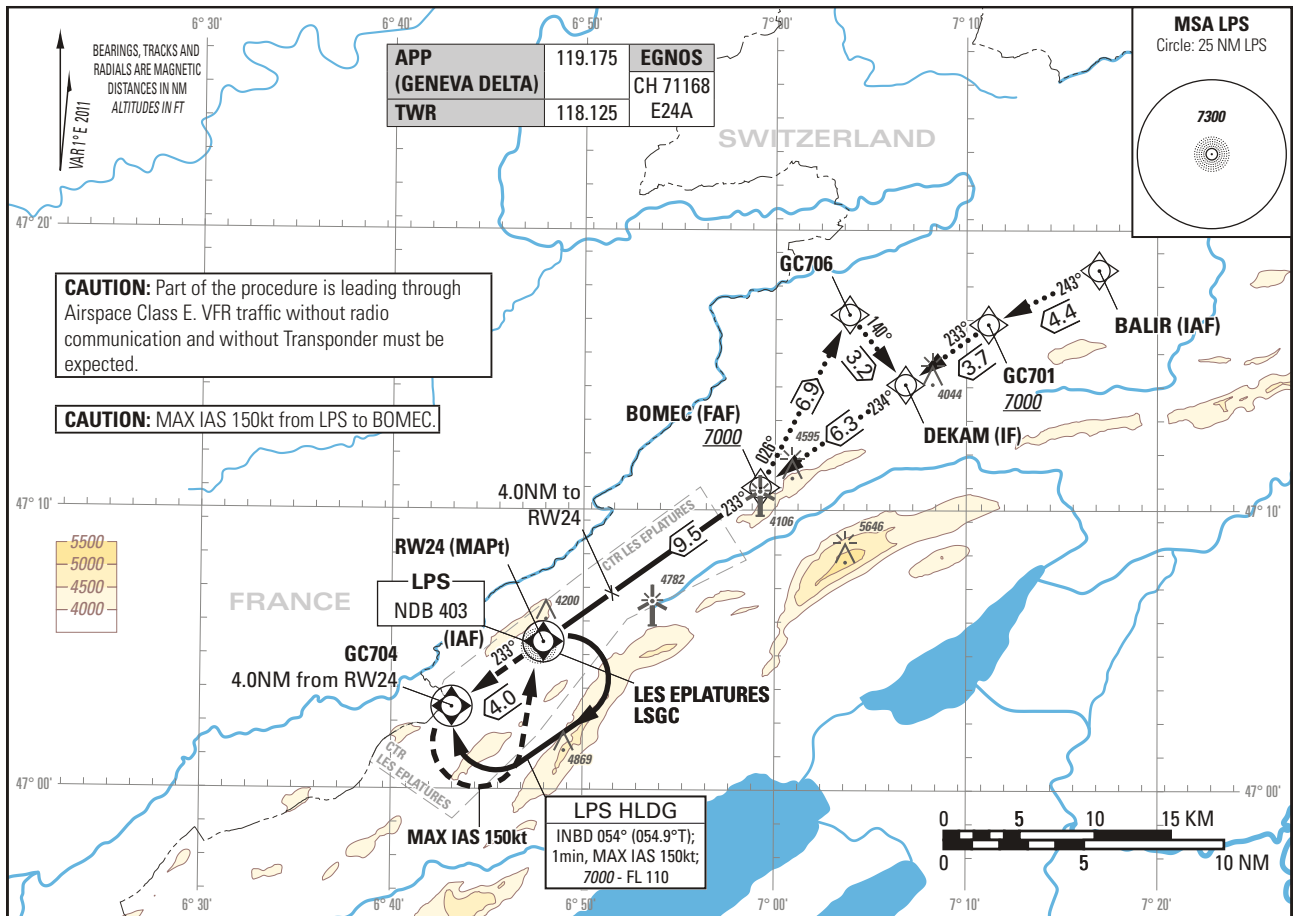


Instrument Approach Chart
(IAC) - ICAO

ELEV 3366ft

TRANSITION LEVEL by ATC
TRANSITION ALTITUDE 7000

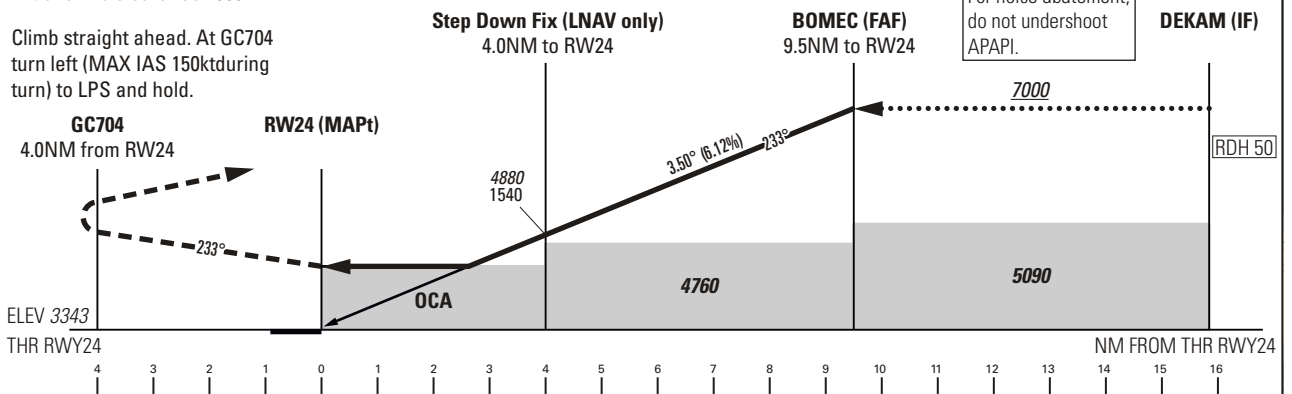
LES EPLATURES LSGC
RNAV (GNSS) RWY 24
ACFT CAT A/B



MISSED APPROACH

Initial climb clearance 7000.

Climb straight ahead. At GC704 turn left (MAX IAS 150kt during turn) to LPS and hold.



Missed APCH climb gradient requirement	STRAIGHT-IN APPROACH	
	A	B
	OCA(H) LNAV	
2.5%	4390 (1050)	
	OCA(H) LPV	
2.5%	4260 (920)	4270 (930)
5.0%	4210 (870)	4220 (880)
CIRCLING	A	B
OCA	4600 (1234)	4850 (1484)

ROD	GS kt					90	110	130	150
	FT/MIN								
	558	682	806	930					

RWY24 DIST	1	2	3	4	5	6	7	8	9
recommended CROSSING ALT	3770	4140	4510	4880	5260	5630	6000	6370	6740
recommended CROSSING HGT	430	800	1170	1540	1920	2290	2660	3030	3400

NOTE
APR 01 - OCT 31: Intense GLD ACT within APCH Sector and ATS Routes.
VIS circling OCH based on AD ELEV 3366ft.
CTN: Gliders parked near RWY edge.

CAUTION
Visual Segment Surface (VSS) penetrated by buildings up to 3560ft AMSL.

COR: new layout, GC707 replaced by DEKAM

Input Data	
Parameters	Values
Operation Type	0
SBAS Provider	1
Airport Identifier	LSGC
Runway	24
Runway Direction	0
Approach Performance Designator	0
Route Indicator	
Reference Path Data Selector	0
Reference Path Identifier	E24A
LTP/FTP Latitude	470511.0200N
LTP/FTP Longitude	0064752.8800E
LTP/FTP Ellipsoidal Height (metres)	1,068.6
FPAP Latitude	470438.9720N
Delta FPAP Latitude (seconds)	-32.0480
FPAP Longitude	0064647.6460E
Delta FPAP Longitude (seconds)	-65.2340
Threshold Crossing Height	15.0
TCH Units Selector	1
Glidepath Angle (degrees)	3.5
Course Width (metres)	105
Length Offset (metres)	736
HAL	40
VAL	50

Output Data	
Data Block	10 03 07 13 0C 18 00 00 01 34 32 05 D8 10 35 14 60 DA EA 02 BE 3D A0 05 FF 5C 02 FE 2C 81 5E 01 64 5C C8 FA 1D 00 D4 3F
Calculated CRC Value	1D00D43F
Supplied CRC Value	1D00D43F
Comparison Result	OK

LTP Orthometric Height 1019.0m