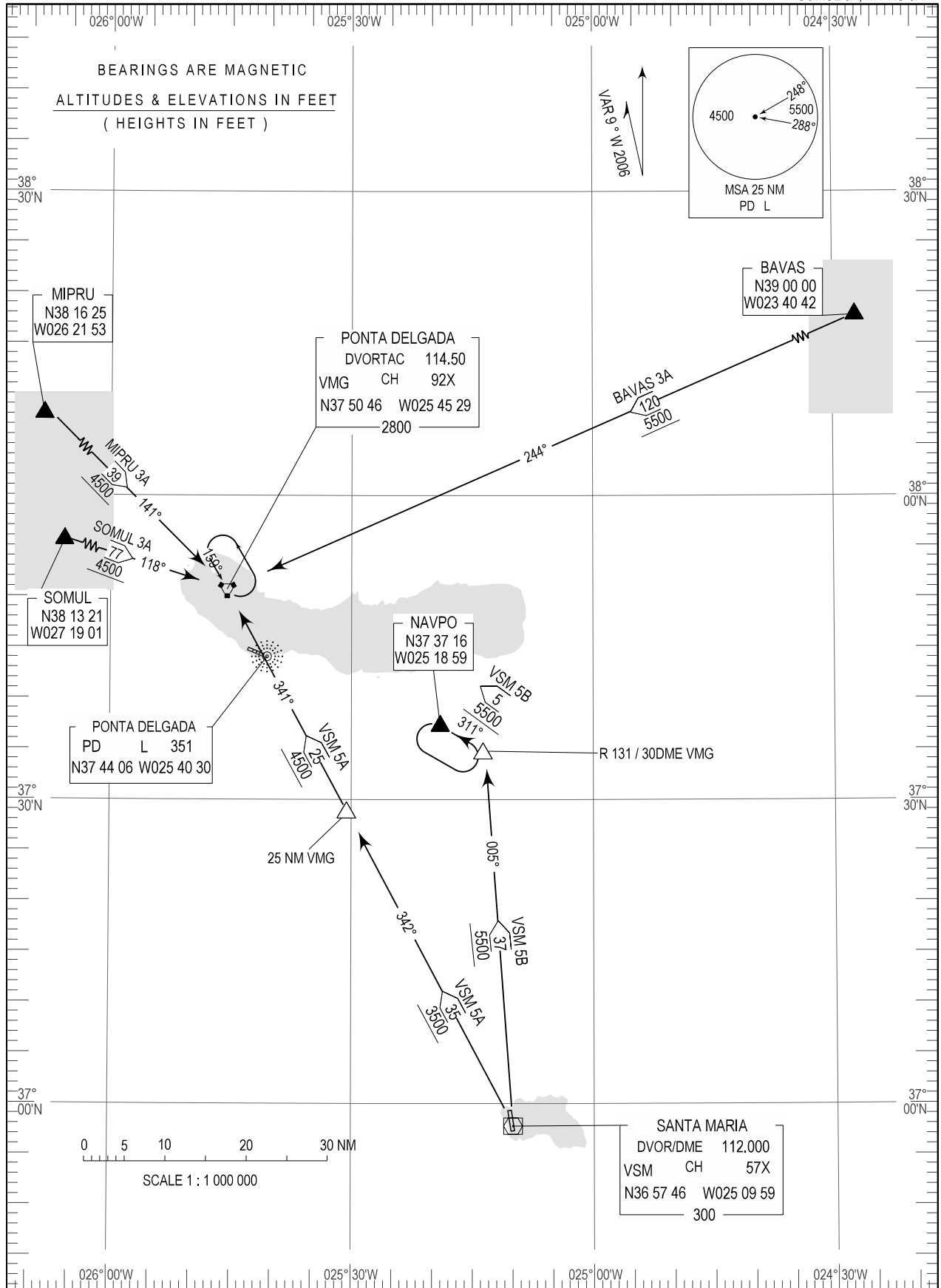


STANDARD ARRIVAL CHART -
INSTRUMENT (STAR) - ICAO

TRANSITION ALTITUDE
6000

APP 119.400
TWR 118.300

PONTA DELGADA (LPPD)
RWY 12/30
BAVAS 3A, VSM 5A, VSM 5B
SOMUL 3A, MIPRU 3A



VOR/DME VSM Freq changed

THIS PAGE INTENTIONALLY LEFT BLANK