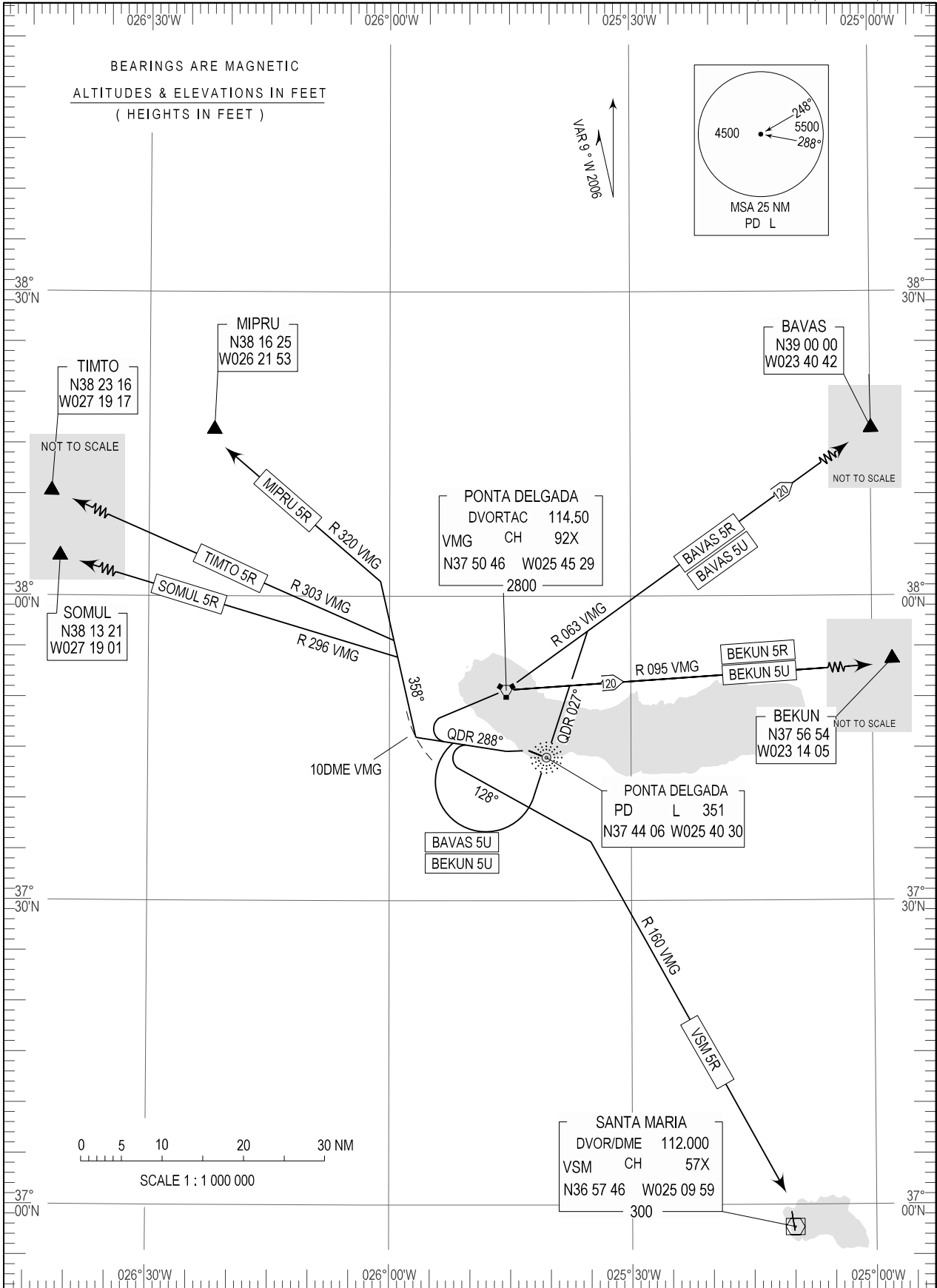


STANDARD DEPARTURE CHART -
INSTRUMENT (SID) - ICAO

TRANSITION ALTITUDE
6000

APP 119,400
TWR 118,300

PONTA DELGADA (LPPD)
RWY 30
BAVAS5R,BAVAS5U,BEKUN5R,BEKUN5U
MIPRU5R,TIMTO5R,SOMUL5R,VSM5R



THIS PAGE INTENTIONALLY LEFT BLANK