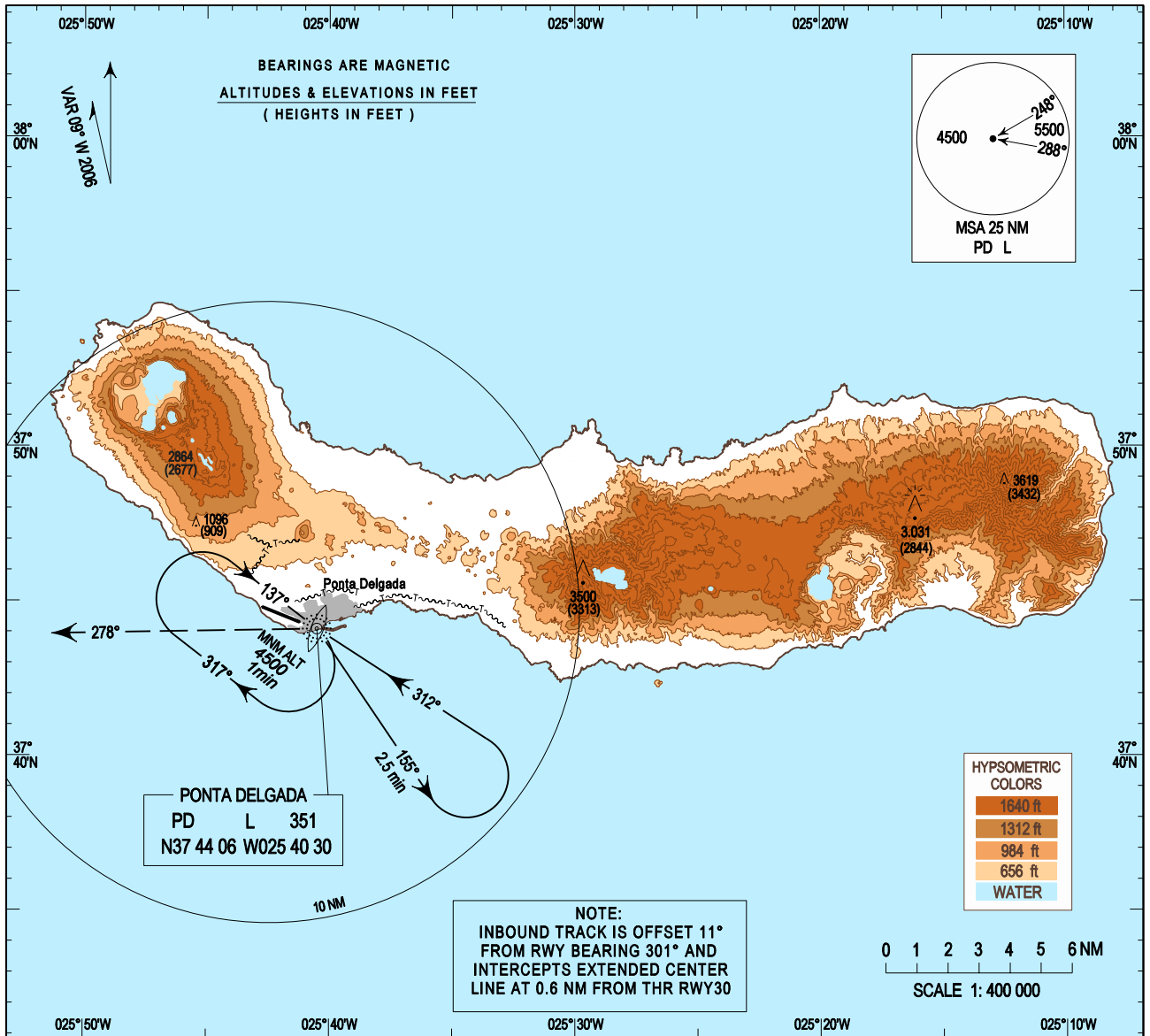


**INSTRUMENT  
APPROACH  
CHART - ICAO**

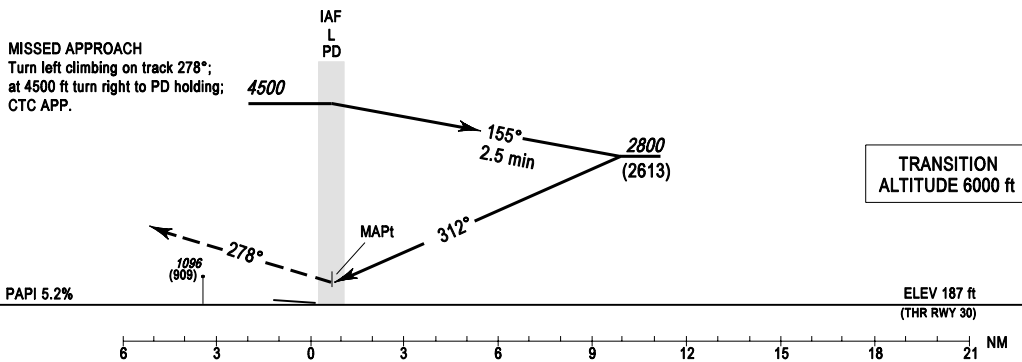
**AD ELEV 259 ft  
HEIGHTS RELATED  
THR RWY 30 - ELEV 187 ft**

**APP 119.400  
TWR 118.300**

**PONTA DELGADA/LPPD**  
L RWY30  
CAT C - D



**MISSED APPROACH**  
Turn left climbing on track 278°;  
at 4500 ft turn right to PD holding;  
CTC APP.



CATEGORY		C	D
OCA (H)			
STRAIGHT-IN		760(580)	
CIRCLING	NORTH RWY 30	NOT AUTHORIZED	
	SOUTH RWY 30	850	950

THIS PAGE INTENTIONALLY LEFT BLANK