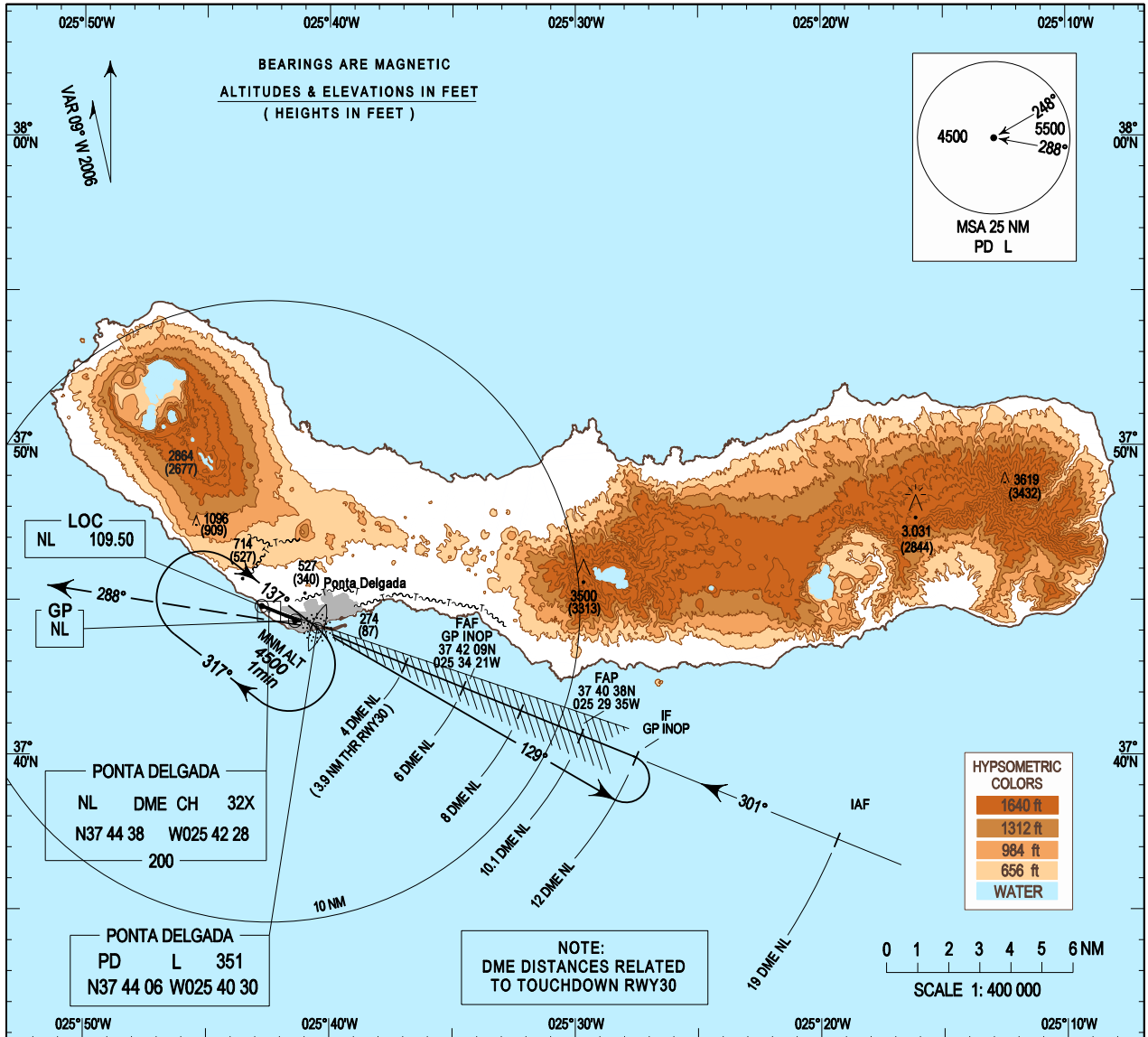


**INSTRUMENT
APPROACH
CHART - ICAO**

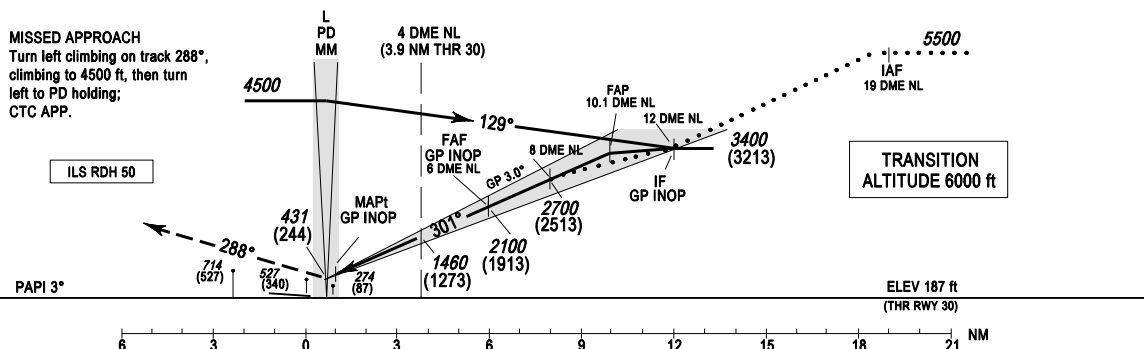
**AD ELEV 259 ft
HEIGHTS RELATED
THR RWY 30 - ELEV 187 ft**

**APP 119.400
TWR 118.300**

PONTA DELGADA/LPPD
ILS / DME RWY30
CAT A - B



MISSED APPROACH
Turn left climbing on track 288°, climbing to 4500 ft, then turn left to PD holding; CTC APP.



CATEGORY		A	B
		OCA (H)	
ILS	CAT I	408(221)	418(231)
	GP INOP	530 (350)	
CIRCLING	NORTH RWY 30	NOT AUTHORIZED	
	SOUTH RWY 30	660	760

		GP INOP							
DME-NL		8	7	6	5	4	3	2	
ALTITUDE HEIGHT		2700(2513)	2400(2213)	2100(1913)	1780(1593)	1460(1273)	1145(958)	825(638)	
Speed	kt	80	100	120	140	160	180	200	
Rate of descent (5.2%)	ft/min	420	525	630	735	840	945	1050	

New chart format

THIS PAGE INTENTIONALLY LEFT BLANK