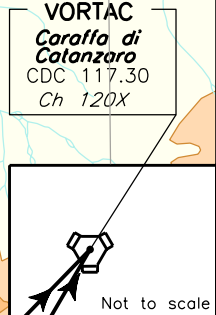
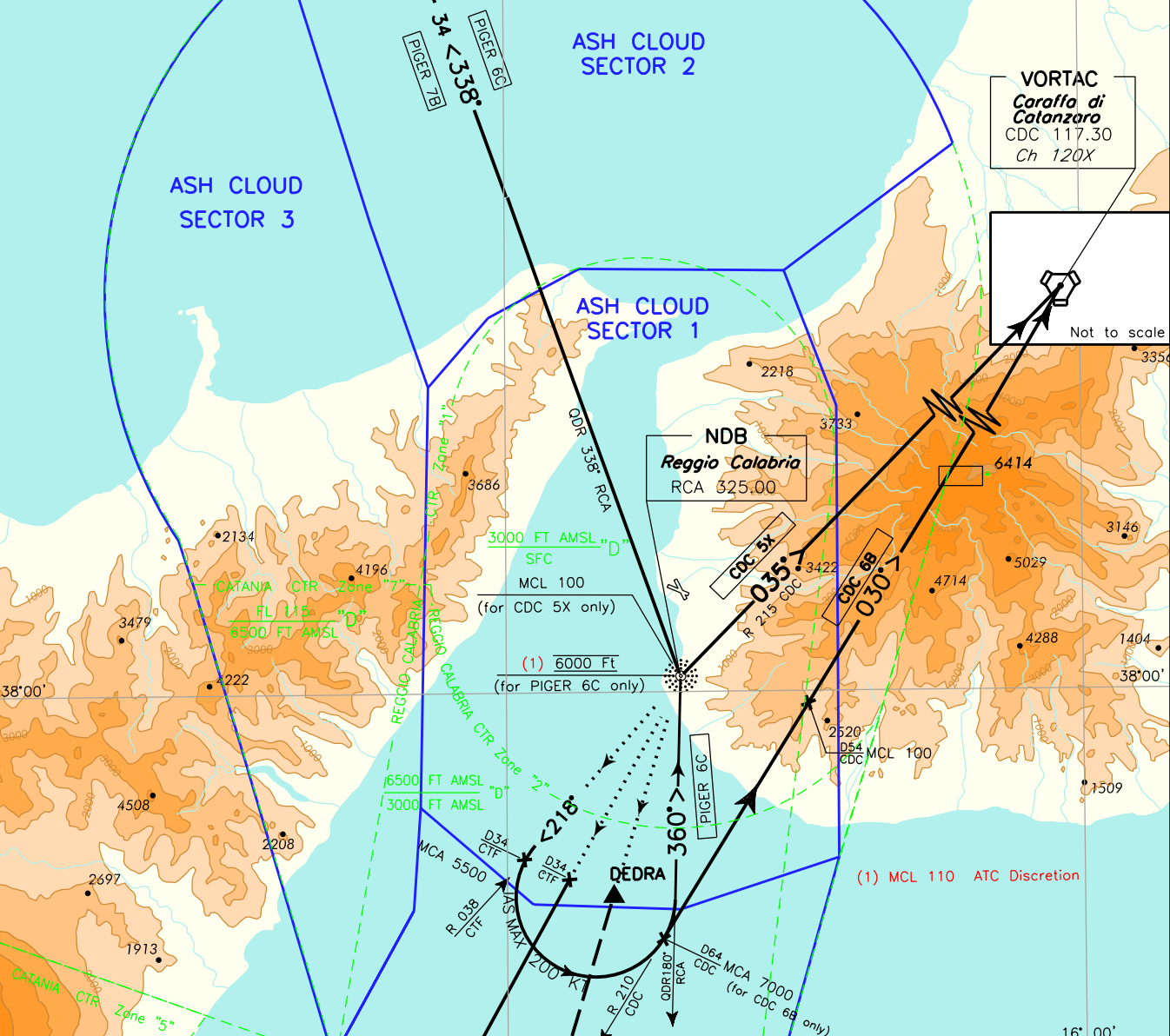


38°30' JAN 2005

<b>SID</b>	<b>REGGIO CALABRIA</b>
<b>N D B</b>	<b>CONTINGENCY</b>
	<b>TRANSITION ALT 7000</b>

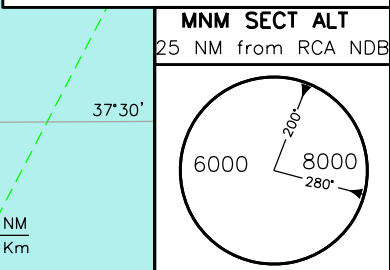


**FREQUENCIES**

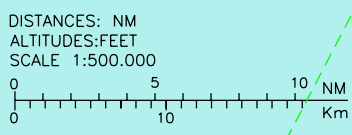
REGGIO CALABRIA	TWR	118.250
	APP	120.275

**LEGEND**

Initial climb	.....
SID	—————>
SID ATC Discretion	- - - - ->
NOT TO SCALE	~~~~~>



**REMARK:**  
Operational limitations are in force in case of contingency procedures. For details see AD 2 LICR 1-1 table 23 item 3



CHANGE: CTR CATANIA ZONE 6 VERTICAL LIMIT MODIFIED

**NOTA/REMARK**

In caso di procedure contingency sono in vigore **LIMITAZIONI OPERATIVE** di cui alla tabella 23 item 3 della sezione AD 2 LICR 1-1/**OPERATIONAL LIMITATIONS** are in force in case of contingency procedures, for details see AD 2 LICR 1-1 table 23 item 3

**DESCRIZIONE SID**

Eseguita la procedura di salita iniziale:

**INDAX 5B**

Procedere su QDR 207° RCA NDB diretti al punto INDAX.

**SID DESCRIPTION**

Initial climb procedure executed:

**INDAX 5B**

Proceed on QDR 207° RCA NDB bound to INDAX.

MCA: INDAX 7000 FT

**CDC 6B**

Virare a sinistra (IAS MAX 220 kt durante la virata) fino ad intercettare e seguire RDL 210 CDC VORTAC (TR 030°) per CDC VORTAC.

**CDC 6B**

Turn left (IAS MAX 220 kt during turn) until intercepting and following RDL 210 CDC VORTAC (TR 030°) bound to CDC VORTAC.

MCA/MCL: RDL 210/64NM CDC VORTAC 7000 FT; RDL 210/54NM CDC VORTAC FL100

**PIGER 7B**

Lasciare RCA NDB su QDR 338° per il punto PIGER.

**PIGER 7B**

Leave RCA NDB on QDR 338° bound to PIGER.

MCL: PIGER FL 100

**PIGER 6C**

Virare a sinistra (IAS MAX 220 kt durante la virata) fino ad intercettare e seguire QDR 180° RCA NDB (TR 360°) per RCA NDB, da lasciare su QDR 338° per il punto PIGER.

**PIGER 6C**

Turn left (IAS MAX 220 kt during turn) until intercepting and following QDR 180° RCA NDB (TR 360°) bound to RCA NDB, to be left on QDR 338° bound to PIGER.

MCA/MCL: RDL 038/34NM CTF VORDME 5500FT; RCA NDB 6000 FT STEADY (FL 110 a discrezione ATC / ATC discretion); PIGER FL 100

**BERMI 5B (Solo a discrezione ATC)**

Procedere su QDR 197° RCA NDB diretti al punto AGEKO, quindi virare a destra su RDL 078 CTF VOR (TR 258°) per il punto BERMI.

**BERMI 5B (ATC discretion only)**

Proceed on QDR 197° RCA NDB bound to AGEKO, then turn right on RDL 078 CTF VOR (TR 258°) bound to BERMI.

MCA: AGEKO 7000 FT

**CDC 5X**

Lasciare RCA NDB su TR 035° per intercettare e seguire RDL 215 CDC VOR per CDC VORTAC.

**CDC 5X**

Leave RCA NDB on TR 035° to intercept and follow RDL 215 CDC VOR bound to CDC VORTAC.

MCL: RCA NDB FL100

Intenzionalmente bianca

*Intentionally left blank*