

ICAO - INSTRUMENT APPROACH CHART FOR VISUAL MANOEUVRE

AD 2 LICR 5-17

DOC.8168-ED.5-2006 AMDT 4

CHANGE: NEW "REG" DME IMPLEMENTED

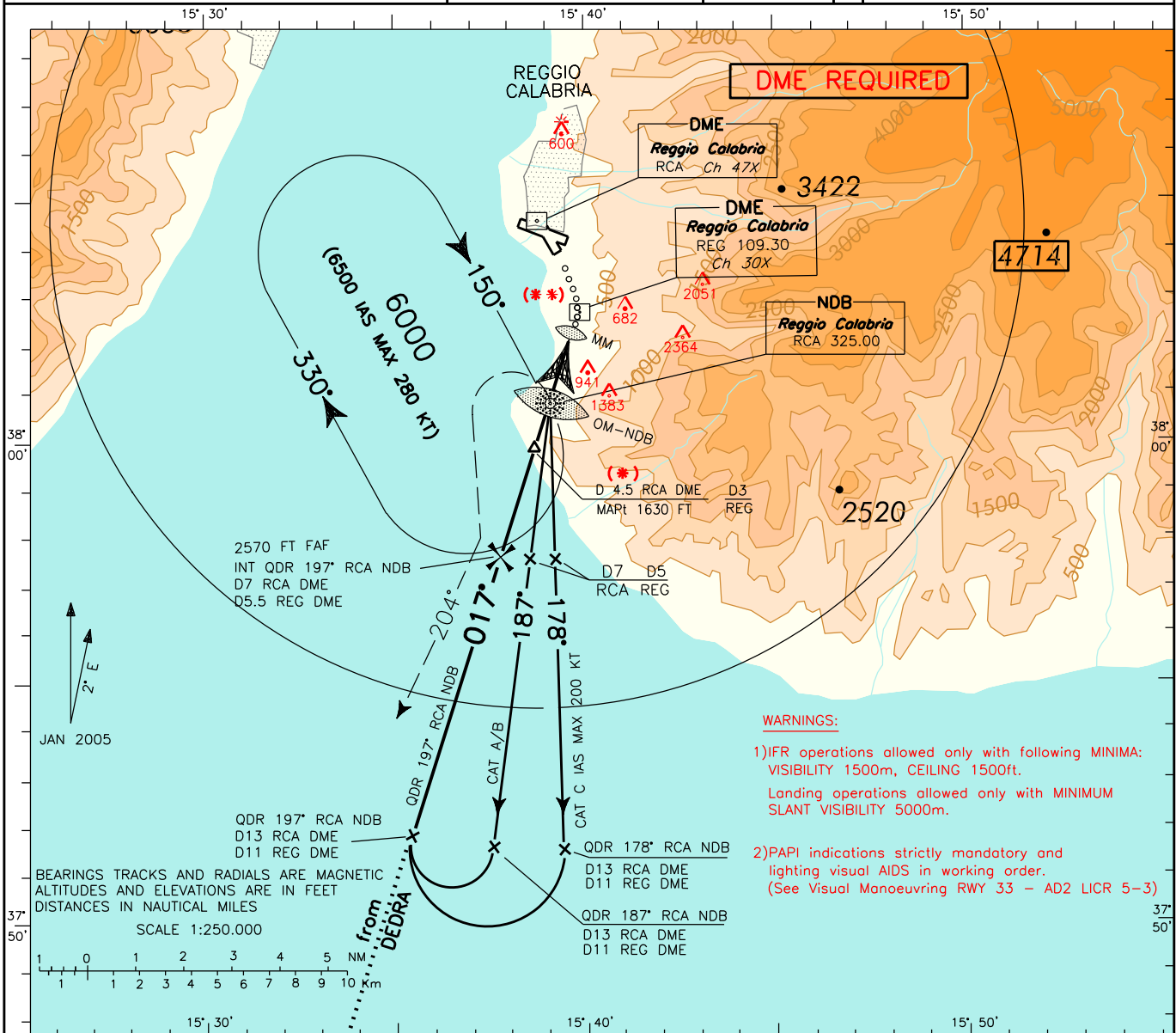
**WARNING:**  
(017° is instrument final approach track not aligned with runway 33 longitudinal axis.

APP *Reggio Approach* 120.275  
TWR *Reggio Tower* 118.250

AD ELEV  
95

L  
I  
C  
R

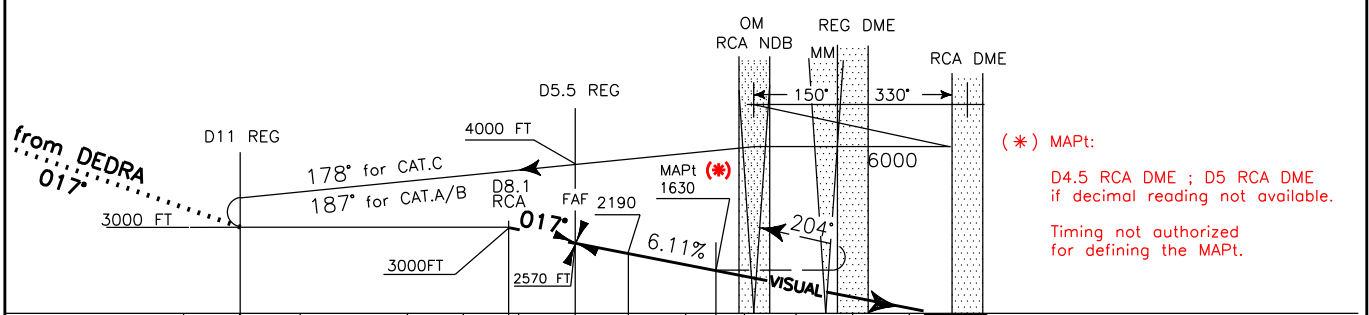
REGGIO CALABRIA  
NDB - B



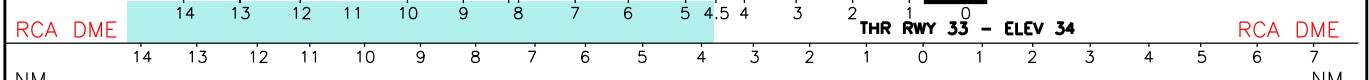
- WARNINGS:**
- 1) IFR operations allowed only with following MINIMA: VISIBILITY 1500m, CEILING 1500ft. Landing operations allowed only with MINIMUM SLANT VISIBILITY 5000m.
  - 2) PAPI indications strictly mandatory and lighting visual AIDS in working order. (See Visual Manoeuvring RWY 33 - AD2 LICR 5-3)

**TRANSITION ALT 7000**

**MISSED APPROACH:** Turn left as soon as possible to intercept QDR 204° RCA NDB climbing to 6000 ft. Passing through 4000 ft turn left to RCA NDB.



(\*) MAPt:  
D4.5 RCA DME ; D5 RCA DME if decimal reading not available.  
Timing not authorized for defining the MAPt.



LANDING MINIMA		FT per MIN	GS	FAF-MAPt	MAPt-THR	DIST RCA	ALT(HGT)	MNM SECT ALT
CATEGORY	A - B - C							
OCA (OCH)	1630 (1535)	370	60	2 : 35	4 : 06	6 DME	2190(2095)	
CIRCLING RW 33 AFTER NDB/OM	(**) ON PRESCRIBED TRACK ONLY (See Chart)	495	80	1 : 57	3 : 04	5 DME	1800(1705)	
CIRCLING RWY 15	IN VMC DURING DAY LIGHT ONLY (West of the Aerodrome)	620	100	1 : 33	2 : 28	4 DME	1410(1315)	
		745	120	1 : 18	2 : 03	3 DME	1000 (905)	
		865	140	1 : 07	1 : 45	2 DME	560 (465)	
		990	160	0 : 58	1 : 32	1 DME	180 (85)	