

WARNING: In case of circling RWY 33, PAPI indications strictly mandatory and lighting visual AIDS in working order.
(See Visual Manoeuvring Rwy 33 - AD2 LICR 5-3)

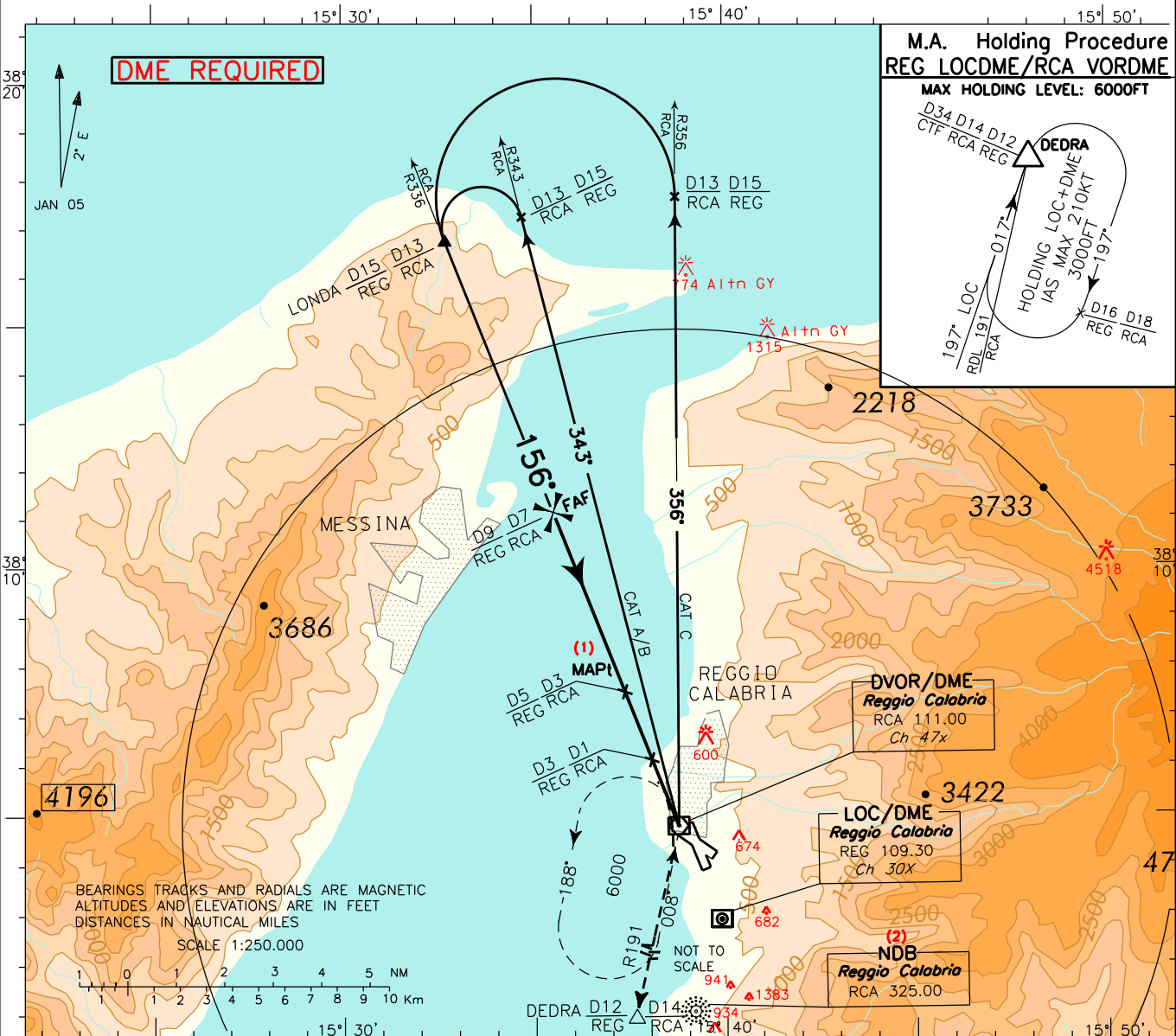
APP Reggio Approach 120.275
TWR Reggio Tower 118.250

AD ELEV
95

LICR REGGIO CALABRIA
VOR - W RWY 15

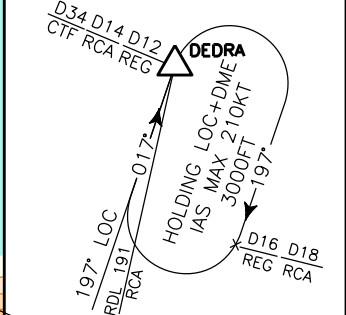
DOC.8168-ED.5-2006 AMDT 4

CHANGE: NEW "REG" DME IMPLEMENTED



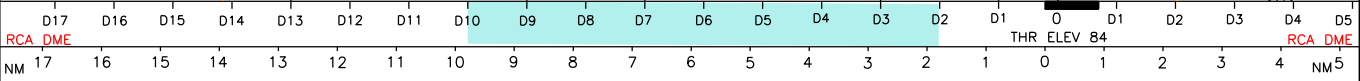
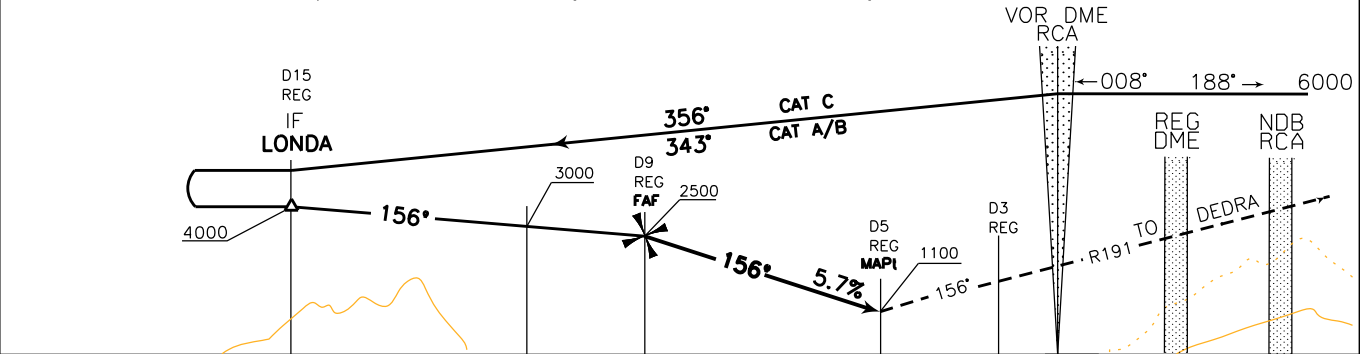
M.A. Holding Procedure
REG LOCDME/RCA VORDME

MAX HOLDING LEVEL: 6000FT



TRANSITION ALT 7000

MISSED APPROACH: Continue on track 156° until D1 RCA DME (or D3 REG DME) then turn right (IAS MAX 200kt) to join RDL 191 RCA VOR climbing to 3000ft direct to DEDRA Holding Pattern to be reached at 3000 ft.



LANDING MINIMA (see WARNING "1")		
CATEGORY	A - B - C	
OCA (OCH)	VIS	CEILING
1100 (1016)	5000 M	1500 FT
CIRCLING (see WARNING "2")	1500 (1405)	

REMARK1: Final approach track offset 5.4° from runway centerline. Runway centerline intercepted 2018m from Threshold 15.
REMARK2: In the event of suddenly RCA VOR unavailability ACFT shall proceed to RCA NDB climbing to 6000ft. If 6000ft are not achieved at first overflying of RCA NDB climb to 6000ft along QDR 204°. Passing 3700ft turn left to RCA NDB.
WARNING 1: IFR operations allowed only with following MINIMA: VISIBILITY 1500m, CEILING 1500ft. Landing allowed only with minimum SLANT VISIBILITY 5000m.
WARNING 2: Circling allowed only West of the aerodrome

GS	FT/MIN	DIST	ALT (HGT)
80	460	6DME	2140 (2056)
100	580	5DME	1800 (1716)
120	690	4DME	1450 (1366)
140	810	3DME	1100 (1016)
160	920	2DME	760 (676)

