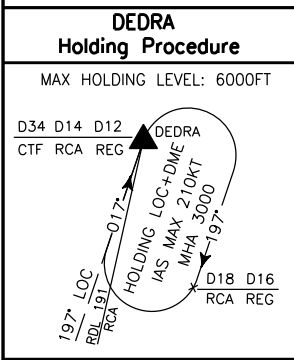
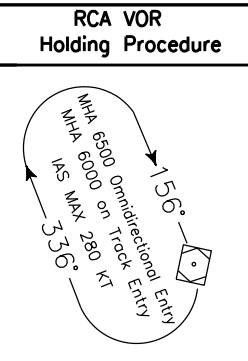
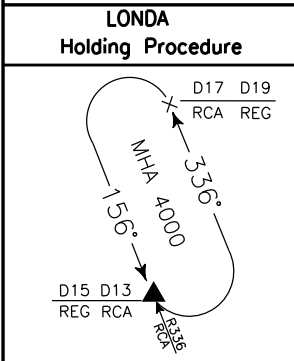
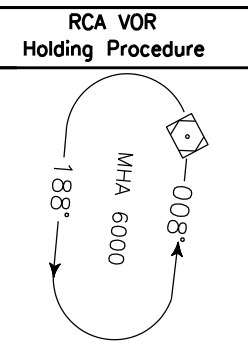
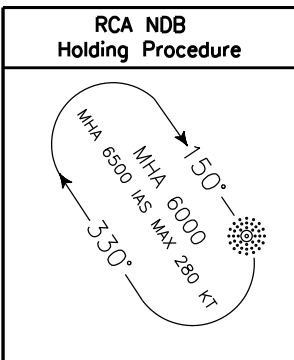
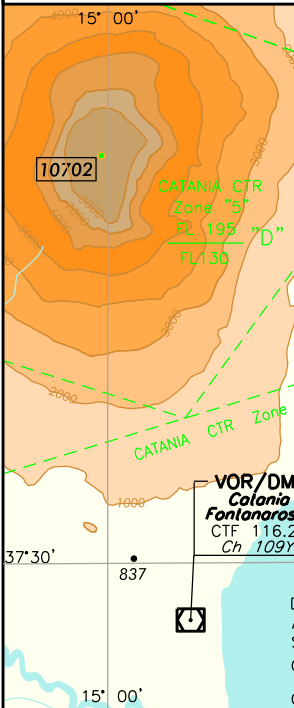


CHANGE: Roma ACC instead of Brindisi ACC FREQ



FREQUENCIES

ROMA	ACC	133.250
REGGIO C.	APP	120.275
	TWR	118.250



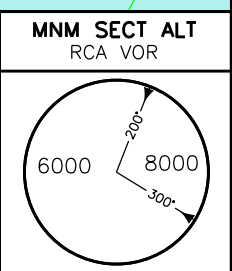
LEGEND

STAR →

STAR ATC Discretion →

AIRSPACE CLASSIFICATION

SEE AIP ENR 1.4



PIGER 1A

PIGER – TR 156° (RDL 336 RCA VOR) – LONDA – RCA VOR/DME.

PIGER 1A

PIGER – TR 156° (RDL 336 RCA VOR) – LONDA – RCA VOR/DME.

MEA: PIGER – LONDA: 6000 FT (4000 FT se autorizzati per le procedure strumentali di avvicinamento RWY15/if cleared for RWY15 instrument approach procedures); LONDA – RCA VOR/DME: 6000 FT

PIGER 1B (A discrezione ATC)

PIGER – TR 158° (QDR 338° RCA NDB) – RCA NDB.

PIGER 1B (ATC discretion)

PIGER – TR 158° (QDR 338° RCA NDB) – RCA NDB.

MEA: PIGER – RCA NDB: 6000 FT

BERMI 1A

BERMI – TR 020° (RDL 200 RCA VOR) – PEKOD – OLINI – RCA VOR/DME.

BERMI 1A

BERMI – TR 020° (RDL 200 RCA VOR) – PEKOD – OLINI – RCA VOR/DME.

MEA: BERMI – RCA VOR/DME: 6000 FT

BERMI 1B (A discrezione ATC)

BERMI – TR 078° (RDL 078 CTF VOR) – AGEKO – TR 017° (QDR 197° RCA NDB) – DEDRA – RCA NDB.

BERMI 1B (ATC discretion)

BERMI – TR 078° (RDL 078 CTF VOR) – AGEKO – TR 017° (QDR 197° RCA NDB) – DEDRA – RCA NDB.

MEA: BERMI – AGEKO – DEDRA – RCA NDB: 6000 FT (3000 FT se autorizzati per un avvicinamento diretto per RWY33/if cleared for RWY33 direct approach)

PEROS 1A

PEROS – TR 192° (RDL 012 RCA VOR) – RCA VOR/DME.

PEROS 1A

PEROS – TR 192° (RDL 012 RCA VOR) – RCA VOR/DME.

MEL/MEA: PEROS – RDL 012/26 NM RCA VOR/DME: FL100; RDL 012/26 NM RCA VOR/DME - RDL 012/15 NM RCA VOR/DME: FL80 o livello di transizione se più alto/ or transition level if higher; RDL 012/15 NM RCA VOR/DME – RCA VOR/DME: 6000FT

PEROS 1B

PEROS – TR 190° (QDR 010° RCA NDB) – RCA NDB.

PEROS 1B

PEROS – TR 190° (QDR 010° RCA NDB) – RCA NDB.

MEL/MEA: PEROS – QDR 010° RCA NDB/26 NM RCA DME: FL100; QDR 010° RCA NDB/26 NM RCA DME - QDR 010° RCA NDB/15 NM RCA DME: FL80 o livello di transizione se più alto/ or transition level if higher; QDR 010° RCA NDB/15 NM RCA DME – RCA NDB: 6000FT

GIMEL 1A

GIMEL – TR 218° (RDL 038 RCA VOR) – RCA VOR/DME.

GIMEL 1A

GIMEL – TR 218° (RDL 038 RCA VOR) – RCA VOR/DME.

MEL/MEA: GIMEL – RDL 038/19 NM RCA VOR/DME: FL 100; RDL 038/19NM RCA VOR/DME – RDL 038/10NM RCA VOR/DME: FL 80 o livello di transizione se più alto/ or transition level if higher; RDL 038/10NM RCA VOR/DME – RCA VOR/DME: 6000 FT

Intenzionalmente bianca

Intentionally left blank