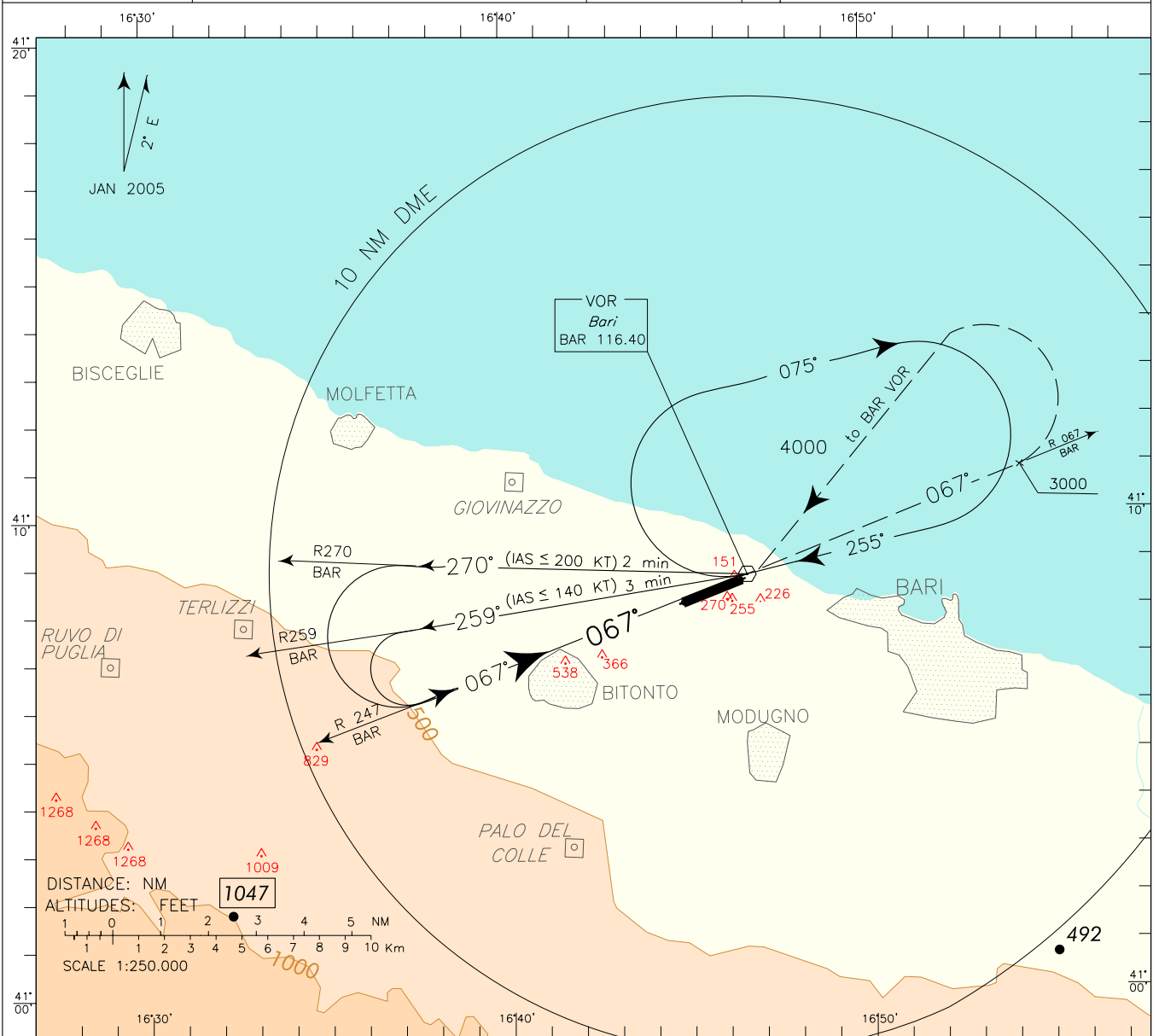


ICAO – INSTRUMENT APPROACH CHART

AD 2 LIBD 5-9

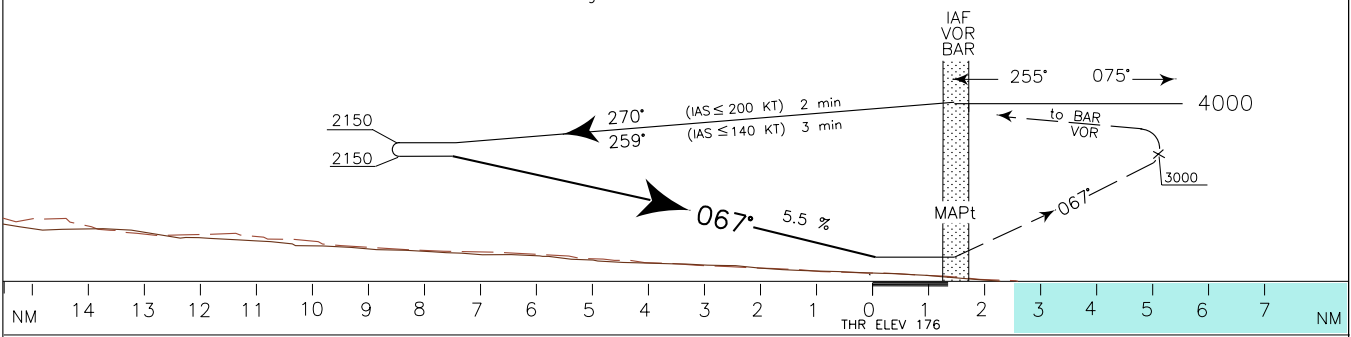
DOC 8168 ED 5 - 2006

APP <i>Bari Approach</i>	119.500	AD ELEV	LIBD	BARI/ PALESE	
TWR <i>Bari Tower</i>	118.300	187		VOR-Y	RWY 07



TRANSITION ALT 5000

MISSED APPROACH: Continue on TR 067° (RDL 067 BAR VOR) and climb to 4000 ft. Crossing 3000 ft turn left to BAR VOR to be reached at 4000 ft.



OCA (OCH)		A	B	C	D	CIRCLING SECTOR	FT PER MIN	GS	MNM SECT ALT	
STRAIGHT IN APPROACH	VOR	1450 (1274)						425	80	BAR
CIRCLING	NORTH OF RWY ONLY	1450 (1263)				531		100		
		637	120							
		743	140							
						849	160			