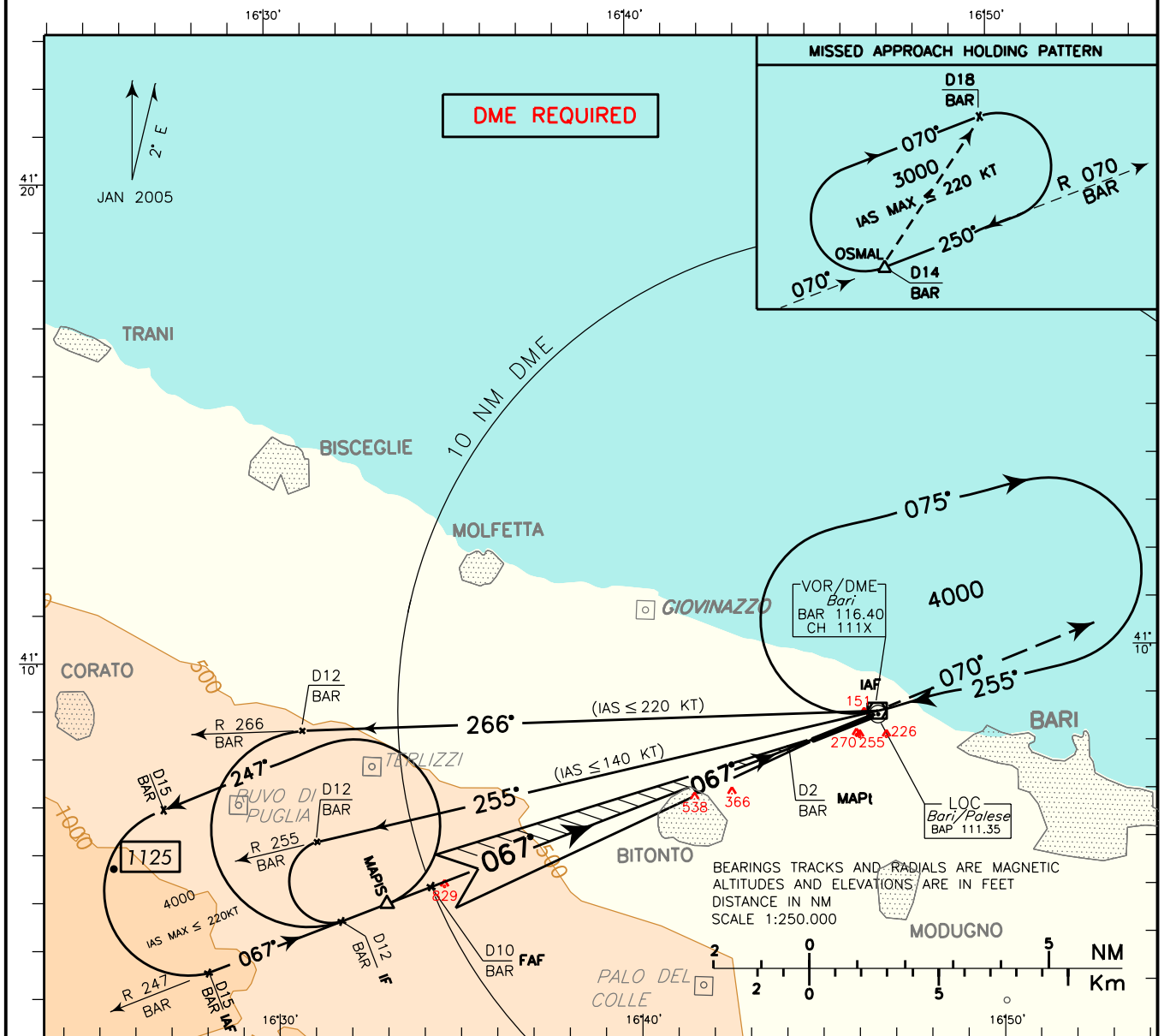


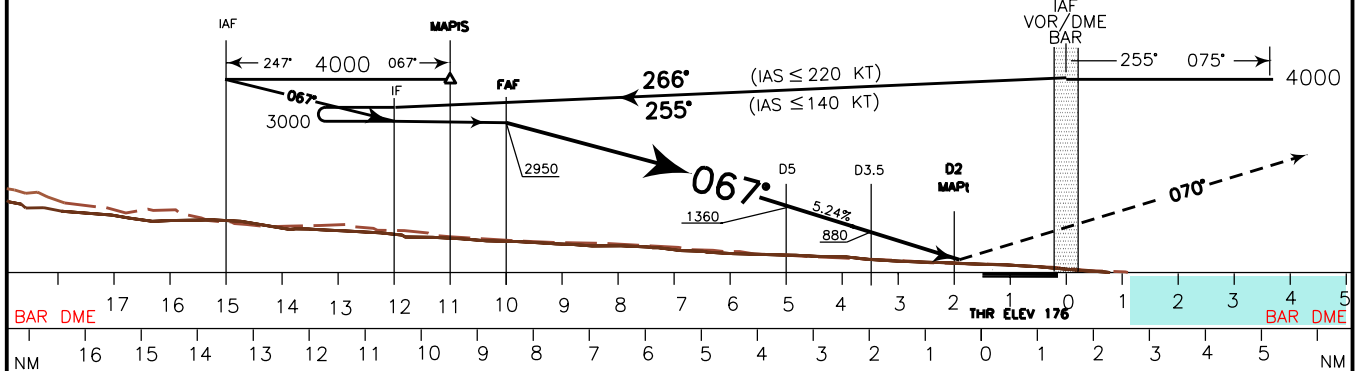
DOC 8168 ED 5 - 2006

CHANGE: TRANSITION ALTITUDE UPDATED

<b>APP</b> Bari Approach	119.500	<b>AD ELEV</b>	<b>LIBD</b> BARI/ PALESE
<b>TWR</b> Bari Tower	118.300	187	VOR-Z or LOC RWY 07



**TRANSITION ALT 5000** At 2 NM BAR DME climb to 3000 ft and proceed on TR 067° (RDL 247 BAR VOR). Over BAR VOR proceed on TR 070° (RDL 070 BAR VOR) inbound to OSMAL holding pattern.



OCA (OCH)		A	B	C	D	CIRCLING SECTOR 	FT PER MIN	GS	FAF-D3.5 6.5 NM	D3.5-MAP1 1.5 NM	DME	ALT (HGT)	MNM SECT ALT	
STRAIGHT IN APPROACH	VOR	600 (424)						425	80	4 : 53	1 : 08	6	1675(1499)	BAR
	LOC	600 (424)					531	100	3 : 54	0 : 54	5	1360(1184)		
CIRCLING	NORTH OF RWY ONLY	850 (663)		1000 (813)			637	120	3 : 15	0 : 45	4	1040(864)		
							743	140	2 : 47	0 : 39	3	720(544)		
							849	160	2 : 26	0 : 34	2	400(224)		